

View Standardized Test Scores

Last Modified on 10/22/2022 9:30 am CDT

[Setup](#) | [Viewing Student Assessment Data](#) | [Scoring Teacher-Scored Assessments](#)

PATH: [Campus Instruction](#) > [Standardized Tests](#)

The Standardized Test tool displays students' assessments information for standardized tests aligned to the course. Select the columns you want to view from the dropdown lists at the top of the screen.

The screenshot shows a web interface for viewing standardized test scores. On the left is a navigation menu with options like Roster, Seating Charts, Student Groups, Class Serve, Post Grades, Assignment Overview, Lockers, Standardized Test (highlighted), Course Requests, and Student Course Recommendations. The main area has filters for Term (1 (07/01/14 - 09/26/14)), Section (01) 580000-1000 AP Calculus, and Assessment (Math 09 IA - Semester 1). Below these are dropdown menus for 'Students', 'Date', 'Absent Count', 'Scale Score', and 'Result'. The table below shows data for several students:

Students	Date	Absent Count	Scale Score	Result
11 Student, Andrew T		0		
10 Student, Bree W		2		
09 Student, Brooke J		2		
12 Student, Devin L	04/24/2013	1	730.000	Proficient
12 Student, Jordan E	04/24/2013	0	798.000	Advanced
12 Student, Kyle M	04/24/2013	0	771.000	Proficient
09 Student, Luke C		0		
12 Student, Lydia J	04/24/2013	0	771.000	Proficient
10 Student, Sarah H		0		

View standardized test scores for students in your section.

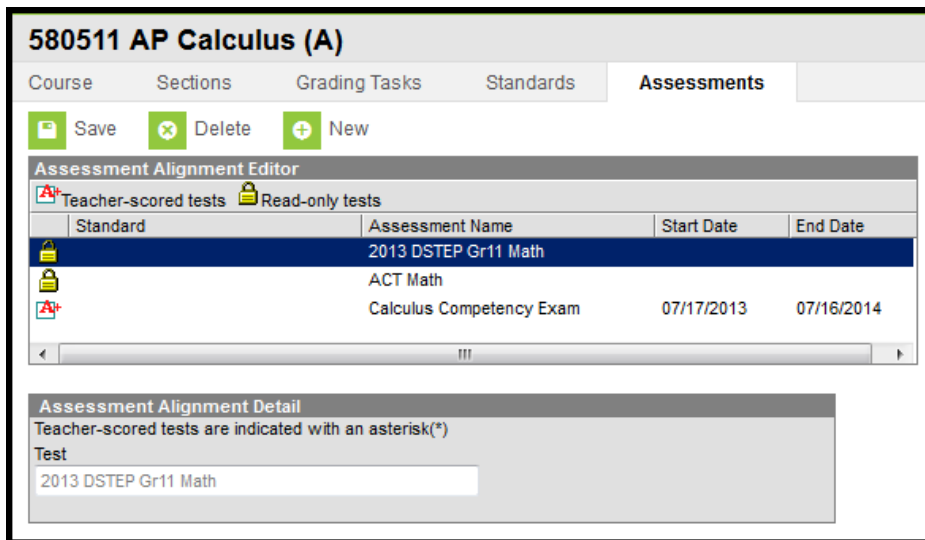
The Assessment list includes both teacher-scored tests and those for which scores are imported from another source.

If multiple score records exist for an assessment the one with the Highest Raw score displays. If this distinction is insufficient, the assessment with the most recent Date reports. Finally, if neither of those distinctions are sufficient, the assessment with the highest record ID reports.

Setup

For an assessment to display in the **Assessment** dropdown list, it must be aligned to the course you're viewing in the [Course Assessments](#) tab.

PATH: [Scheduling](#) > [Courses](#) > [Assessments](#)

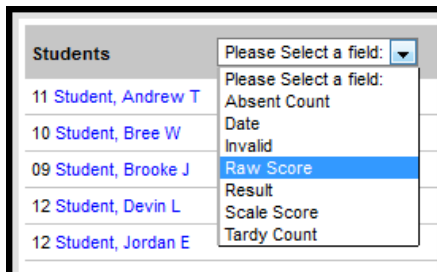


Assessments Aligned to a Course

Viewing Student Assessment Data

To view student data, select a **Section** and **Assessment** from the dropdown lists at the top of the tool. The student list populates based on the section.

In each of the four column headers, select the data you'd like to view in that column. For an option to display in these dropdown lists, at least one student in the section must have that field entered for the test. Options are as follows:



Column Options for Viewing Assessment Data

This table describes the general definitions of test-related terms. However, the actual application of these concepts may vary by district and be dependent on district setup.

Option	Description
Absent Count	The number of times the student has been absent from this section.
Custom Fields	As many as 4 custom fields can display in this dropdown list, which vary based on district setup.
Date	The date the student took the test.

Option	Description
Discipline Incident Count	The total behavior incidents the student has been involved in, both discipline and award related.
Invalid	Indicates if the student's score is recorded as invalid (true) or not (false).
Normal Curve Equivalent	Indicates that the student score compared to the standard scale is an option for scoring, usually on a 0-100 scale similar to a percentile.
Percent	The percent of correct answers out of the total possible.
Percentile	The percentile in which the score falls compared to other test scores. The standard of comparison (across the district, nationally, etc) varies by test. For example, this percentile could represent the district for a local test, or a national percentile from an imported score on a test such as the ACT or SAT.
Raw Score	The number of points possible minus the number of points the student missed.
Reason Code	The reason why the student did not take the test. Also variable.
Received Accommodation	Indicates that the student received accommodation when taking this test.
Result	The code representing the student's score, similar to a letter grade or a proficiency level. Options are established in Test Setup .
Scale Score	The converted raw score that has been standardized so that multiple tests can be compared on the same scale. For example, a 1200 on the SAT is a representation of student performance, not a number of points earned.
Tardy Count	The number of times the student has been tardy to this section.

Scoring Teacher-Scored Assessments

In the assessment dropdown list, Teacher-Scored Assessments display at the top of the list. To score one of these assessments, select it and enter scores for your students. Click Save when finished.

Section 01) 580511-1000 AP Calculus (A) (Reg) Assessment Calculus Competency Exam

Save

Please Select an Assessment:

- Teacher Scored**
- Calculus Competency Exam

Not Teacher Scored

- 2013 DSTEP Gr11 Math
- ACT Math
- CD Assessment
- DA Test

Students	Raw Score	Scale Score	Result
11 Student, Andrew T	<input type="text"/>	<input type="text"/>	<input type="text"/>
10 Student, Bree W	<input type="text"/>	<input type="text"/>	<input type="text"/>
09 Student, Brooke J	<input type="text"/>	<input type="text"/>	<input type="text"/>
12 Student, Devin L	<input type="text"/>	<input type="text"/>	<input type="text"/>
12 Student, Jordan E	<input type="text"/>	<input type="text"/>	<input type="text"/>
12 Student, Kyle M	<input type="text"/>	<input type="text"/>	<input type="text"/>

Teacher-Scored Assessments in the Standardized Test Tool

Be aware that updating an existing score, such as an assessment retake, **overwrites** the previous score. A record of the previous score is not kept.