

Idaho Evaluation Summary Report

Last Modified on 10/22/2022 9:33 am CDT

[ID ESR 2022](#) | [ID ESR Reevaluation/Redetermination 2022](#) | [ID ESR SLD 2022](#)

Classic View: Student Information > Special Ed > General > Documents

Search Terms: Special Ed Documents

The Individual Education Program (IEP) or Evaluation team uses the Evaluation to document the student's educational needs and the student's determination of eligibility for special education.

The current formats of the Idaho Evaluation Summary Report (ESR) include:

- ID ESR 2022
- ID ESR Reevaluation/Redetermination 2022
- ID ESR SLD 2022

Evaluation formats are selected in [Eval Types](#).

An evaluation must be created whether or not the student is determined to have a disability. A copy of the evaluation team report, including the documentation of eligibility, is given to the student's parents by the school district.

ID ESR 2022

ID ESR editors

The following table lists the editors available on the student's ID ESR 2018 evaluation, the section(s) of the print format that include the entered information, a description of what the editor is used for and any special considerations and instructions for using the editor.

Editor Name	Printed Document Section	Description	Special Considerations and Instructions
-------------	--------------------------	-------------	---

Editor Name	Printed Document Section	Description	Special Considerations and Instructions
Evaluation Header	Cover information	The Evaluation Header editor lists general information about the Evaluation.	This editor must be saved before continuing to other parts of the evaluation. Evaluation Date will auto-populate with the current date.
Student Demographics	Cover information	The Student Demographics Editor includes student data entered in the Demographics tool.	Clicking Refresh Student Information will synchronize the information in the editor with the current information entered on the Demographics , Households , School and Enrollments tools.
Parent/Guardian Demographics	Cover information	The Parent/Guardian Demographics Editor populates based on established student/guardian relationships created on the student's Relationships tool or indicated by the guardian checkbox on the Households tool. The editor includes Demographics information for the student's guardian.	Clicking Refresh Guardian Information will synchronize information in the editor with the most recent information from the student's guardian's Demographics and Households tool.
Team Meeting Information	Evaluation Team Information	The Team Meeting Information editor allows the user to record meetings of team members regarding the evaluation.	Team members must be added in the Team Members tab before entering participants. To include information in this editor in the printed document, mark the Print in Eval checkbox.
Summary of Findings	Summary of Findings: A, B and C	The Summary of Findings editor details the student's performance on administered assessments and additional factors that may contribute to the student's performance, such as a lack of appropriate instruction or limited English proficiency.	The print format sections populated from this editor will only be included in the printed document if data is entered in this editor.

Editor Name	Printed Document Section	Description	Special Considerations and Instructions
Assessment Results	Assessment Results	The Assessment Results editor is used to document the area to be evaluated, the procedure for evaluation, and information about the person or agency conducting the evaluation.	The print format sections populated from this editor will only be included in the printed document if data is entered in this editor.
Summary of Evidence	Summary of Evidence	The Summary of Evidence editor is used to document the student's disability based on state criteria and the various forms of evaluation conducted, how the student's disability impedes their educational performance and progress, and any instructions necessary for the student to be able to access and progress in the general education curriculum and meet grade level achievement standards.	The print format sections populated from this editor will only be included in the printed document if data is entered in this editor.
Eligibility Determination	Eligibility Determination	The Eligibility Determination editor summarizes the results of the evaluation, including a description of the student's disability, what effect that disability may have on the student's education and any resources provided to assist in the student's education. Additional information includes the student's identified disability, the date and eligibility determination, and other relevant details.	Eligibility Determination Date and Eligibility Determination are required fields and must be entered before the editor can be saved.

ID ESR Reevaluation/Redetermination 2022

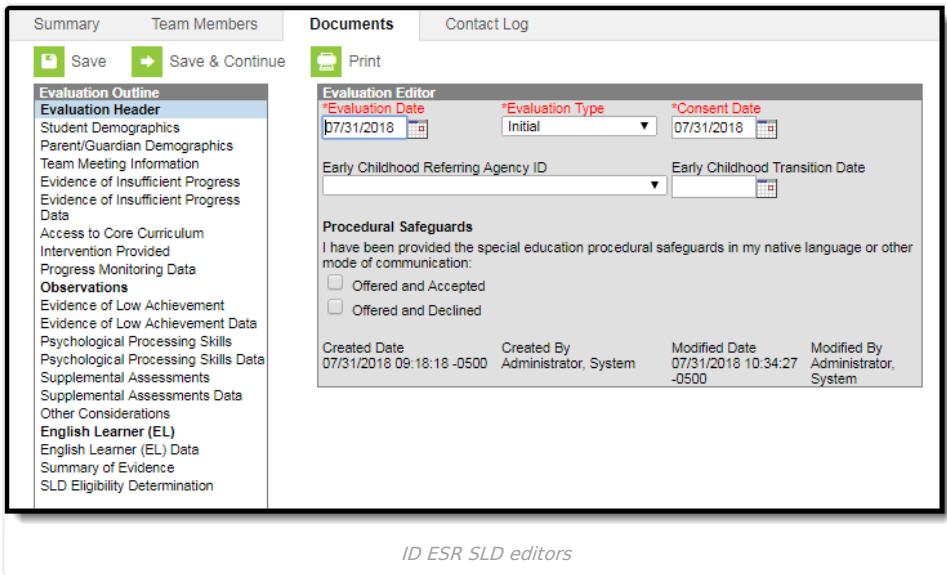
ID ESR Reevaluation/Redetermination editors

The following table lists the editors available on the student's ID ESR 2018 Reevaluation/Redetermination, the section(s) of the print format that include the entered information, a description of what the editor is used for and any special considerations and instructions for using the editor.

Editor Name	Printed Document Section	Description	Special Considerations and Instructions
Evaluation Header	Header	The Evaluation Header editor lists general information about the Evaluation.	This editor may not be saved before continuing to other parts of the evaluation. Evaluation D will auto-populate with the current c
Student Demographics	Header	The Student Demographics Editor includes student data entered in the Demographics tool.	Clicking Refresh Student Information will synchronize the information in the editor with the current information entered on the Demographics , Households , School and Enrollments tools.
Parent/Guardian Demographics	Contact Information	The Parent/Guardian Demographics Editor populates based on established student/guardian relationships created on the student's Relationships tool or indicated by the guardian checkbox on the Households tool. The editor includes Demographics information for the student's guardian.	Clicking Refresh Guardian Information will synchronize information in the editor with the most recent information from the student's guardian's Demographic and Household tool.
Team Meeting Information	Evaluation Team Information	The Team Meeting Information editor allows the user to record meetings of team members regarding the evaluation.	Team members must be added in the Team Members tab before entering participants. To include information in this editor in printed documents, use the Print in E checkbox.

Editor Name	Printed Document Section	Description	Special Considerations and Instructions
Reevaluation/Redetermination	Reevaluation/Redetermination Report	The Reevaluation/Redetermination editor is used to document the student's strengths/needs, background information concerning existing evaluation data, and any exclusionary or other factors.	N/A
Reevaluation Assessment Results	Assessment Results	The Reevaluation Assessment Results editor is used to document the area assessed, the name of the assessment, information about the person or agency conducting the evaluation, and a summary of the results.	The print form sections populated from this editor will only be included in the printed document if data is entered in this editor
Summary of Evidence	Summary of Evidence	The Summary of Evidence editor is used to document the student's disability based on state criteria and the various forms of evaluation conducted, how the student's disability impedes their educational performance and progress, and any instructions necessary for the student to be able to access and progress in the general education curriculum and meet grade level achievement standards.	N/A
Eligibility Determination	Eligibility Determination	The Eligibility Determination editor summarizes the results of the evaluation, including a description of the student's disability, what effect that disability may have on the student's education and any resources provided to assist in the student's education. Additional information includes the student's identified disability, the date and eligibility determination, and other relevant details.	Eligibility Determination Date and Eligibility Determination are required fields and must be entered before the editor can be saved

ID ESR SLD 2022



The following table lists the editors available on the student's ID ESR 2018 SLD evaluation, the section(s) of the print format that include the entered information, a description of what the editor is used for and any special considerations and instructions for using the editor.

Editor Name	Printed Document Section	Description	Special Considerations and Instructions
Evaluation Header	Header	The Evaluation Header editor lists general information about the Evaluation.	This editor must be saved before continuing to other parts of the evaluation. Evaluation Date will auto-populate with the current date.
Student Demographics	Header	The Student Demographics Editor includes student data entered in the Demographics tool.	Clicking Refresh Student Information will synchronize the information in the editor with the current information entered on the Demographics , Households , School and Enrollments tools.

Editor Name	Printed Document Section	Description	Special Considerations and Instructions
Parent/Guardian Demographics	Contact Information	The Parent/Guardian Demographics Editor populates based on established student/guardian relationships created on the student's Relationships tool or indicated by the guardian checkbox on the Households tool. The editor includes Demographics information for the student's guardian.	Clicking Refresh Guardian Information will synchronize information in the editor with the most recent information from the student's guardian's Demographics and Households tool.
Team Meeting Information	Evaluation Team Information	The Team Meeting Information editor allows the user to record meetings of team members regarding the evaluation.	Team members must be added in the Team Members tab before entering participants. To include information in this editor in the printed document, mark the Print in Eval checkbox.
Evidence of Insufficient Progress	Evidence of Insufficient Progress	The Evidence of Insufficient Progress editor is used to document the student's strengths/needs, background information concerning existing evaluation data, and any exclusionary or other factors.	N/A
Evidence of Insufficient Progress Data	Data that establishes the core curriculum is effective for most students	The Evidence of Insufficient Progress Data editor is used to document data that establishes the core curriculum is effective for most students.	N/A
Access to Core Curriculum	Access to Core Curriculum	The Access to Core Curriculum editor is used to document the access to and progress in general education curriculum.	N/A
Intervention Provided	Intervention Provided	The Intervention Provided editor is used to document the intervention given to the student in response to the student's progress in a particular area of education.	N/A
Progress Monitoring Data	Progress Monitoring Data	The Progress Monitoring Data editor is used to document the way in which progress toward a particular area of education will be tracked for the student.	N/A

Editor Name	Printed Document Section	Description	Special Considerations and Instructions
Observations	Observation of academic performance/behavior in the area(s) of concern	The Observations editor is used to document information about the person or agency observing the student's progress and a summary of their observation related to the student's identified academic area of concern.	Once an Academic Area of Concern is saved, a New Observation Attendee record should be added.
Evidence of Low Achievement	Evidence of Low Achievement	The Evidence of Low Achievement editor is used to document any areas of concern in which the student might have low performance.	N/A
Evidence of Low Achievement Data	Provide evidence of low achievement in the area(s) of concern	The Evidence of Low Achievement Data editor is used to document any assessments used to determine the student's low achievement in a particular academic area.	N/A
Psychological Processing Skills	Psychological Processing Skills	The Psychological Processing Skills editor is used to document the psychological assessment of the student.	N/A
Psychological Processing Skills Data	Psychological Processing Skills	The Psychological Processing Skills Data editor is used to document the assessments used to determine the student's psychological needs.	N/A
Supplemental Assessments	Supplemental Assessments	The Supplemental Assessments editor is used to document any additional findings found via alternate assessments.	N/A
Supplemental Assessments Data	Supplemental Assessments	The Supplemental Assessments Data editor is used to document the alternate assessments given to the student.	N/A
Other Considerations	Other Considerations	The Other Consideration editor is used to document if the student's learning difficulty is the result of additional disabilities.	N/A
English Learner (EL)	Does not print	The English Learner editor is used to document if the student is an English Learner and how this determination impacts the student's academic function.	N/A
English Learner (EL) Data	Does not print	The English Learner Data editor is used to document any assessments or documentation proving the student's EL status.	N/A

Editor Name	Printed Document Section	Description	Special Considerations and Instructions
Summary of Evidence	Summary of Evidence	The Summary of Evidence editor is used to document the student's disability based on state criteria and the various forms of evaluation conducted, how the student's disability impedes their educational performance and progress, and any instructions necessary for the student to be able to access and progress in the general education curriculum and meet grade level achievement standards.	The print format sections populated from this editor will only be included in the printed document if data is entered in this editor.
SLD Eligibility Determination	Eligibility Determination	The Eligibility Determination editor summarizes the results of the evaluation, including a description of the student's disability, what effect that disability may have on the student's education and any resources provided to assist in the student's education. Additional information includes the student's identified disability, the date and eligibility determination, and other relevant details.	Eligibility Determination Date and Eligibility Determination are required fields and must be entered before the editor can be saved.

Previous Versions

[Evaluation Summary Report \(Idaho\) \[.2231 and previous\]](#)