

Condition List

Last Modified on 10/22/2022 9:38 am CDT

[Health Condition List Prerequisites](#) | [Condition List Groups](#) | [Create a New Health Condition](#)

Classic Path: System Administration > Health > Condition List

Search Terms: Condition List

The **Health Condition List** stores the conditions or diseases that students may have. This condition can be listed on the student’s health tab and related treatments or medications can then be tracked for the student.

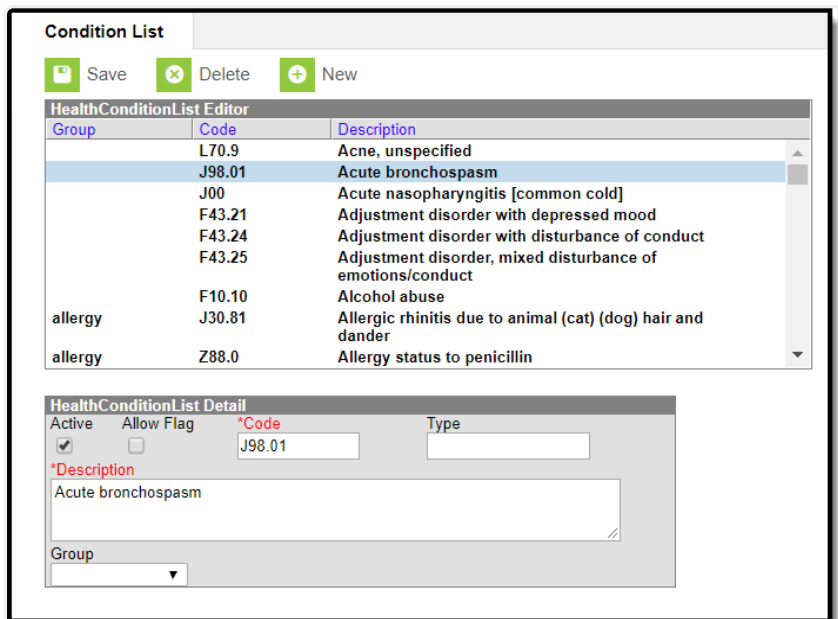


Image 1: Condition List

Health Condition List Prerequisites

The following items must be done prior to creating health conditions.

Health System Preferences

Classic Path: System Administration > Preferences > System Preferences

Search Terms: System Preferences

System Preferences are available that affect the display and logic of health conditions and condition flags when assigned to a student. These preferences should be reviewed and set as appropriate for the school district.

- [Flag Health Conditions](#)
- [Default Health Conditions](#)

These preferences must be set for conditions to work properly.

Condition List Groups

Classic Path: System Administration > Custom > Attribute/Dictionary

Search Terms: Attribute Dictionary

Groups can be created for Health Conditions to better organize the list of conditions a district may have. This is done by adding a Group dictionary item to the Health Condition List attribute.

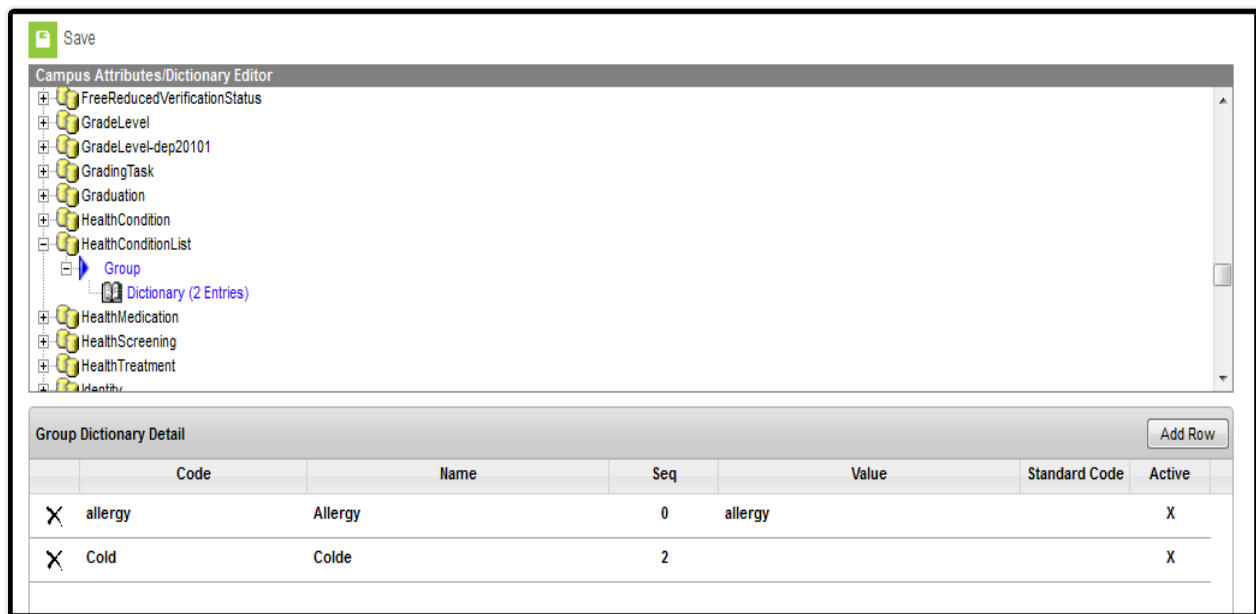


Image 2: Health Group Attribute/Dictionary

Add Health Condition Group Dictionary Items

1. Expand the **Health Condition List** folder in the **Campus Attributes/Dictionary Editor**.
2. Expand the **Group** heading within the Health Condition List folder.
3. Select the **Dictionary** link
4. Select **Add Row**.
5. Enter a **Code** for the group. Codes can be entered as numbers or letters.
6. Enter the **Name** for the group.
7. If there is a specific sequence that condition groups should appear, enter a **Sequence**. Sequences of 1 appear first in sort lists. If no sequence is entered, the group names will appear alphabetically or numerically, depending on the entered code.
8. Enter a **Value** for the dictionary item if desired.
9. Mark the item as **Active**. This will display the group name in the selection editor for Health Conditions.
10. Repeat this process as many times as necessary.
11. When finished, click the **Save** button. New (active) dictionary items will be available for selection when entering health condition options in System Administration.

Create a New Health Condition

1. In System Administration > Health > Condition List, select the **New** button. The **Health Condition List Detail** editor will appear below.
2. Mark the **Active** checkbox to allow the condition to be assigned to a student. If not selected, the condition can still be saved, but will not appear in the list of conditions for a student. The condition will appear in the Condition List Editor in non-bold font. Active conditions appear in bold font.
3. When the condition is assigned to a student, districts have the option of displaying a condition flag next to the student's name. If this new condition should cause a flag to appear next to a student's name, mark the **Allow Flag** checkbox.
4. Enter the code for the condition within the **Code** field. This code can be a state code for a certain condition, a district code, or a code number that comes from the International Classification of Diseases (ICD) list.

Codes can be up to 10 digits or characters in length.

5. Enter the type of condition within the **Type** field if desired. The Type will be combined with the Code on reports and lists if populated.
6. Enter a description for the condition within the **Description** field. This description can be up to sixty characters in length, including any spaces or punctuation.
7. Designate a **Group** for the condition if desired by selecting a group from the dropdown list. If no group option is appropriate for the condition, leave this field blank. Groups are created in the [Attribute Dictionary](#).
8. Select the **Save** button when finished. The new condition will appear within the **Health Condition List Editor**.