

FRAM (Free Reduced Application Management)

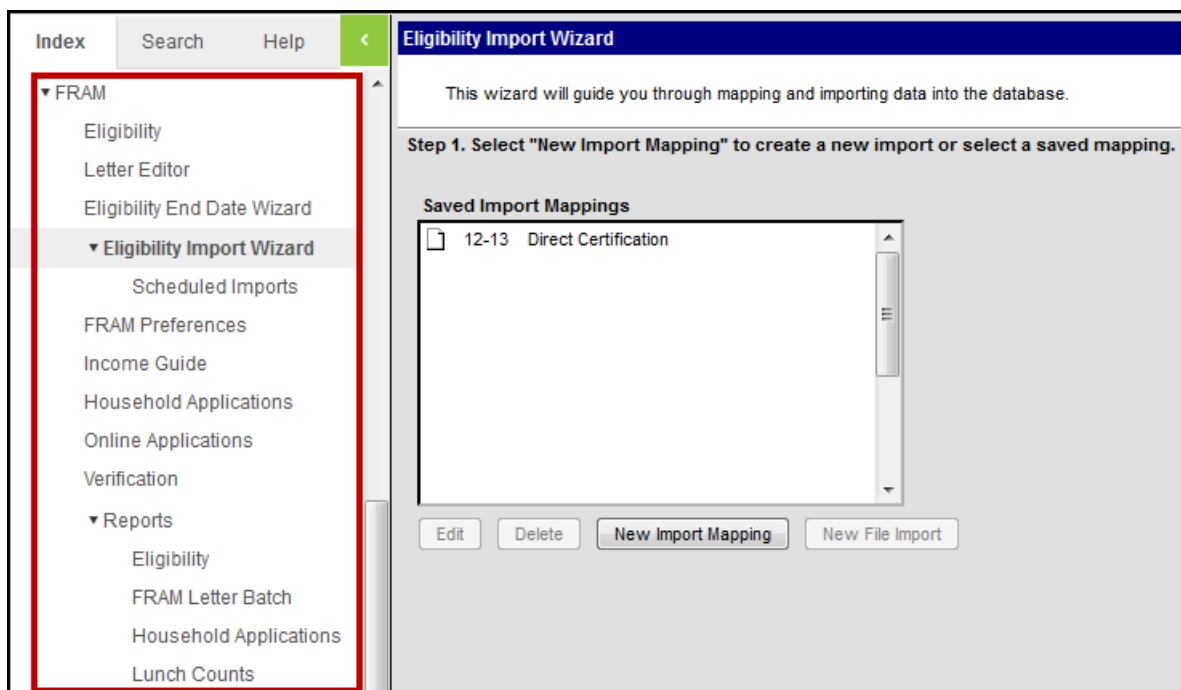
Last Modified on 10/22/2022 9:51 am CDT

The FRAM (Free and Reduced Application Management) module provides the tools for processing applications and approving federal meal service assistance for students. Users can use FRAM to complete the following tasks:

- Review and update processed applications via the household application tool
- Generate batch approval and denial letters
- Conduct and report annual federal verification of applications
- Take advantage of up-to-date federal income guidelines managed by Infinite Campus
- Automate the importing of eligibility status with the Campus Eligibility Import Wizard
- Complete state reporting of meal status

For more information about creating and managing Meal Benefits Applications (including Online Meal Benefits Applications), see the [Setting up Online Meal Benefit Applications](#) article.

Campus **Point-of-Sale** provides additional tools for food service functionality. The FRAM module works with **Point-of-Sale** (when used), but it should be recognized that these areas can be used independently.



FRAM Letters

Topic	Tool
Letter Formats	FRAM Letter Editor
Letter Languages	FRAM Letter Editor
Creating a Letter	FRAM Letter Editor
Modifying the Letter Format	FRAM Letter Editor
Copying Letters	FRAM Letter Editor
Deleting Letters	FRAM Letter Editor
Printing a Sample Letter	FRAM Letter Editor
Generating Letters	FRAM Letter Editor
Examples of Letter Templates	FRAM Letter Editor

Student Eligibilities

Topic	Tool
View Existing Eligibility Records	Eligibility
Create New Eligibility Records	Eligibility
Delete Eligibility Records	Eligibility
View Modifications made to an Eligibility Record	Eligibility
Edit Student Eligibility Meal Status	Eligibility
Syncing Eligibility to State	Eligibility

Household Application Expiration and Eligibility End Dates

Topic	Tool
Updating Household Application Expiration Dates	Eligibility End Date Wizard
Understanding the Eligibility End Date Report (Household Application)	Eligibility End Date Wizard
Updating Imported and Manually Entered Eligibility End Dates	Eligibility End Date Wizard
Understanding the Eligibility End Date Report (Eligibility End Dates)	Eligibility End Date Wizard

Importing Eligibility Data Files

Topic	Tool
Basic Import File Requirements	Eligibility Import Wizard
Extending Direct Certification to Other Students in a Household	Eligibility Import Wizard
Importing Unique Eligibility Statuses for All Students	Eligibility Import Wizard
Importing the Same Eligibility Status for All Students	Eligibility Import Wizard
State-Level Imports	Eligibility Import Wizard
Using the Eligibility Import Wizard	Eligibility Import Wizard
Re-using Saved Import Mappings	Eligibility Import Wizard
Eligibility Import Report Examples and Description	Eligibility Import Wizard

Setting FRAM Preferences

Topic	Tool
Application Preferences - Application Preferences relate to Meal and Educational Benefits applications, canned reports and Process Inbox messages.	FRAM Preferences
Verification Preferences - Verification Preferences are used to set default letter configurations.	FRAM Preferences
Permission Preferences - Permission Preferences allow districts to create a permission type. This allows the application signer to authorize the district permission to share their child(ren)'s free/reduced eligibility with other district staff members.	FRAM Preferences

Federal Income Guidelines for Meal Service Attendance

Topic	Tool
Viewing the Income Guide	Income Guide
Meal Status Display	Income Guide

Household Applications

Topic	Tool
Screen Example and Field Definitions	Household Applications
Entering New Household Applications	Household Applications
Amending Household Applications	Household Applications
Copying Household Applications	Household Applications
Excluding Household Applications	Household Applications
Deleting Household Applications	Household Applications
Viewing Household Applications	Household Applications
Adding People to a Household Application	Household Applications
Adding Household Members as Students	Household Applications
Removing People from a Household Application	Household Applications
Printing Eligibility Notification Letters	Household Applications

Online Applications

Topic	Tool
Setting up Online Meal Benefit Applications	System Administration
Viewing Pending Online Applications	Online Applications
Searching Pending Online Applications	Online Applications
Processing an Online Application	Online Applications
Suspending an Online Application	Online Applications
Viewing Processed Applications	Online Applications
Creating and Editing Custom Online Application Letter Templates	Online Application Editor
Submitting Meal Benefits Applications via the Portal	Campus Portal

Verifying Applications

Topic	Tool
Verification Types and Logic	Verification
Verification Process Overview and Procedures	Verification
Verification Screen Examples and Field Definitions	Verification

FRAM Reports

Topic	Tool
Eligibility Report - This report displays students and their eligibility information.	FRAM Reports
FRAM Letter Batch Report - This report generates letters to be sent to parents/guardians, indicating whether or not students were approved for free/reduced-priced meals.	FRAM Reports
Household Applications Report - This report generates the FRAM applications of households approved for free and reduced-priced meals.	FRAM Reports
Lunch Counts Report - This report generates lunch count information related to the lunch counts feature of the student Attendance tool.	FRAM Reports

Tool Rights

Topic	Tool
FRAM Tool Rights	FRAM