

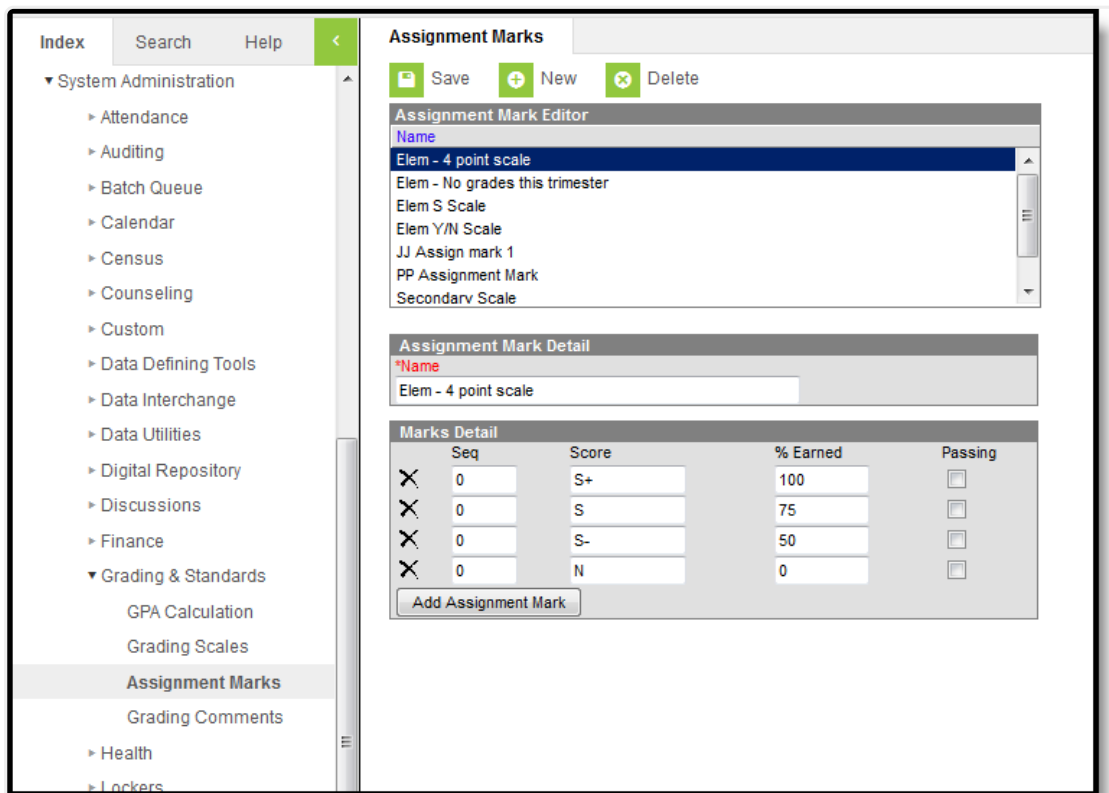
Assignment Marks Setup (Grading and Standards)

Last Modified on 10/22/2022 9:53 am CDT

[Assignment Marks Example](#) | [Create Assignment Marks](#)

PATH: *System Administration > Grading and Standards > Assignment Marks*

Assignment marks are used by teachers to score student assignments. These assignment marks can be created and maintained at the district level, allowing for a more uniform set of scores. If given tool rights, teachers are also able to create their own sets of marks to meet the needs of their classes.



Assignment Marks are used to score assignments.

Assignment Marks Example

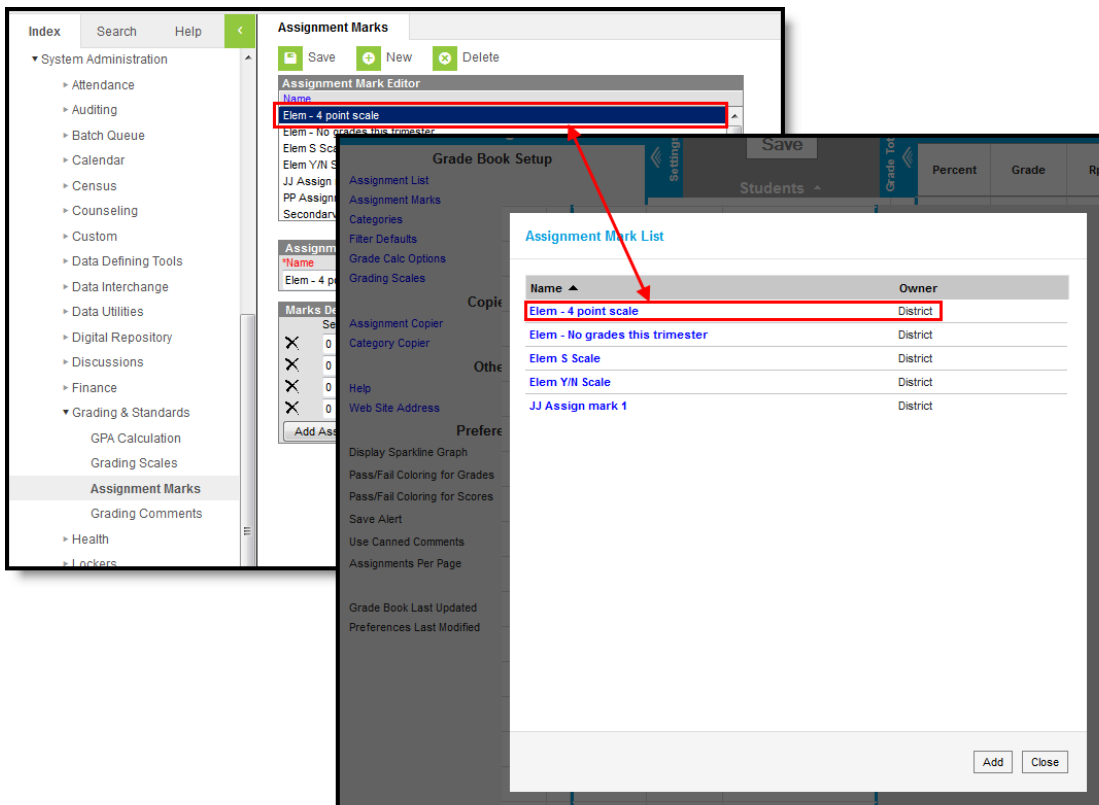
This tool is used to create a custom set of scores for an assignment that should have a numeric effect on student grades, without revealing those numbers to students. For example, a teacher uses a set of marks for scoring a daily free writing assignment. Students receive a score of +, /, or -, based on whether students complete the assignment satisfactorily (+ = 100%), completed it but need improvement (/ = 90%), or did not complete the assignment (- = 60%). Each mark is associated with a percentage, which is used to calculate grades, awarding students the associated percentage of the assignment's Total Points. But the marks allow the teacher to provide feedback on the writing assignment without putting the emphasis on the numerical score the student

received.

Create Assignment Marks

1. Click the **New** icon. The **Assignment Mark Detail** and **Marks Detail** editors display.
2. Enter the **Name** of the set of Assignment Marks. The name should be descriptive enough to be identifiable by teachers.
3. Click **Add Assignment Mark** to add additional marks. Click the **X** next to a row to remove it.
4. Enter the following fields for each mark:
 - **Sequence**: The order in which the marks display. If this field is left blank, marks are sorted by the % Earned value.
 - **Score**: The score entered by the teacher. These values may be alphabetic or numerical, and up to 10 characters in length.
 - **% Earned**: Indicates the % of the Total Points entered for the assignment that the student earns. For example, if an assignment is worth 5 points and a student receives a mark score aligned to 80%, the score is calculated as 4 points.
5. Indicate which scores are considered **Passing**.
6. Click the **Save** icon when finished.

Once saved, the teacher can choose to use the Assignment Marks when creating an assignment.



Assignment Marks Selection in Teacher Grade Book