

Ed-Fi Reconciliation

Last Modified on 10/22/2022 9:59 am CDT

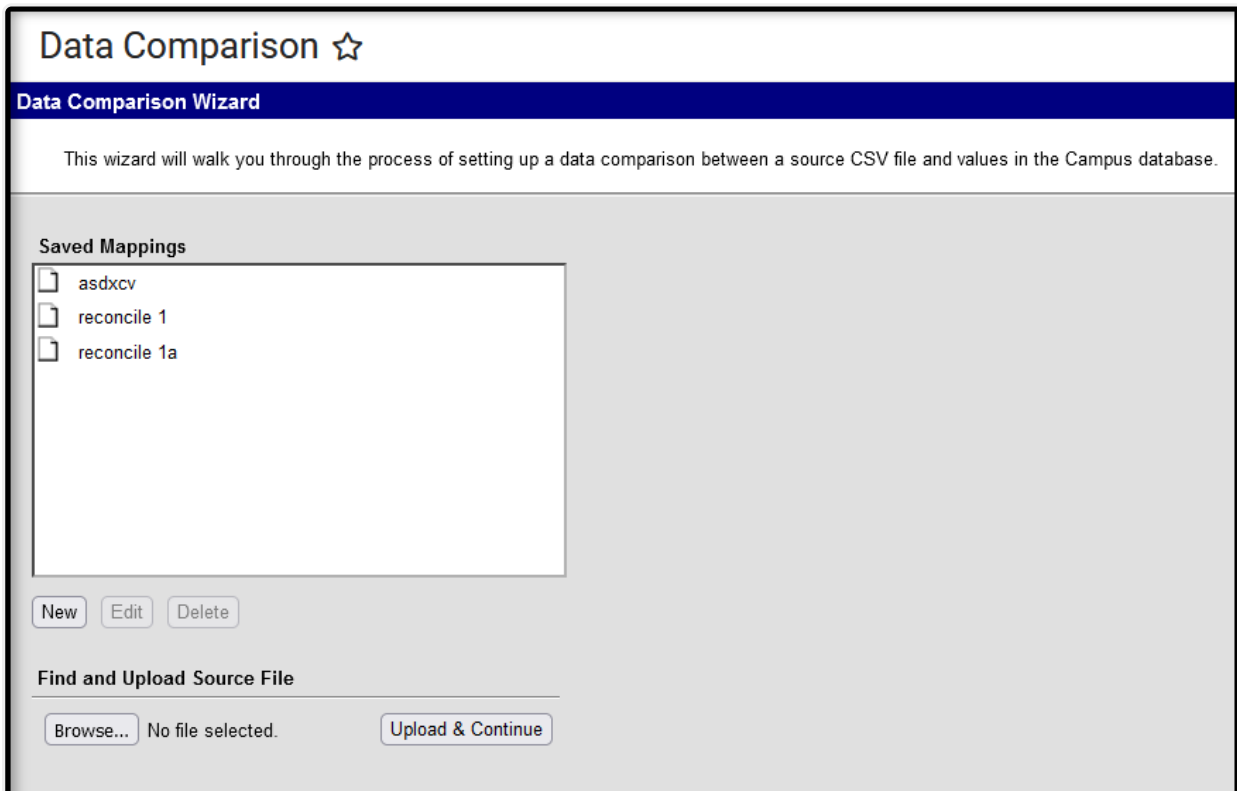
Classic View: System Administration > Ed-Fi > Ed-Fi Reconciliation

Search Terms: Ed-Fi Reconciliation

The Ed-Fi Reconciliation tool allows users to compare state Ed-Fi data against data existing within the Campus database. By using this tool, users can identify errors and gaps in data existing at the state and Campus level and correct this data to improve data quality and ensure proper state reporting and funding.

See the following sections for more information:

[Prerequisites](#) | [Tool Rights](#) | [Reconcile Data Between the State and Campus](#) | [Compare Data](#) | [Edit an Existing Mapping](#) | [Delete a Mapping](#) | [For Arizona Districts Only: Comparing Data Against AzEDS Reports](#)



Ed-Fi Reconciliation

Prerequisites

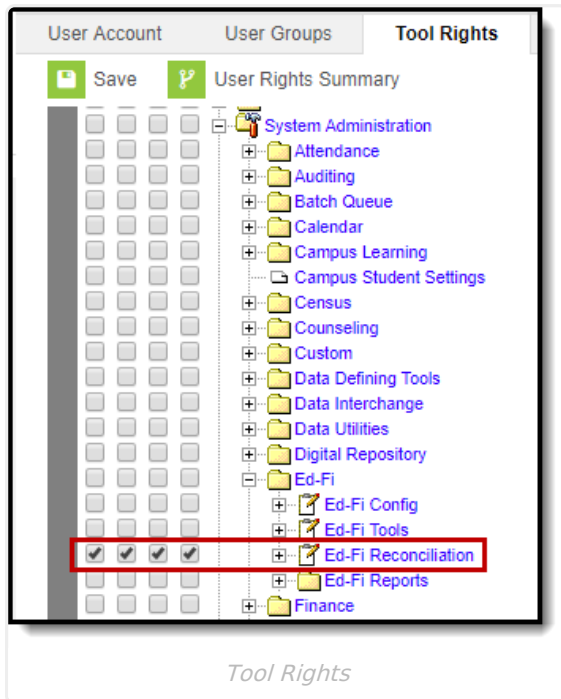
- Ed-Fi functionality must be enabled via [Enable Ed-Fi System Preference](#).
- In order to properly use Ed-Fi tools, proper values must be established within the [Ed-Fi Config tool](#). This ensures Campus is communicating with Ed-Fi and successfully sending data to their servers.

- Ed-Fi IDs should be assigned to users via the [Demographics tab](#).

Tool Rights

PATH: System Administration > User Security > Users > Tool Rights

Users must have at least **R**(ead) tool rights in order to use the Ed-Fi Reconciliation tool.



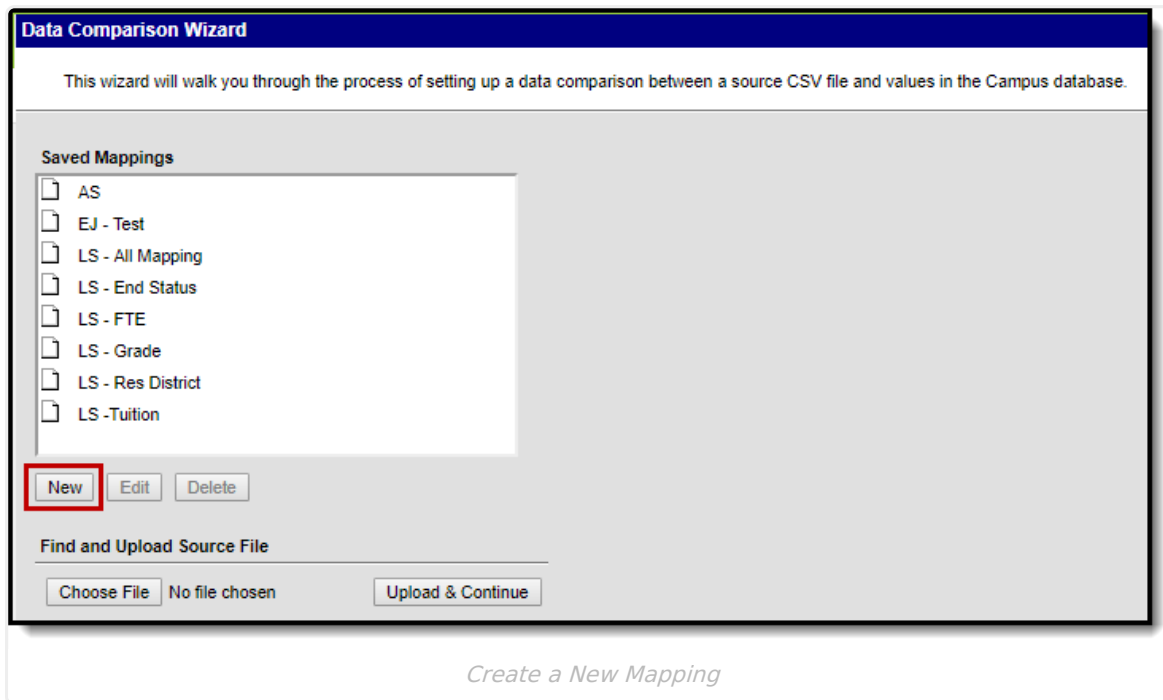
Reconcile Data Between the State and Campus

The first step in reconciling data between data provided by the state and information within Campus is to create a mapping. This mapping lets the tool understand how to align each column of data in the state file with its respective Campus field and data. Once mappings are created, users can continue to reuse them as newer state files come in (with the assumption data locations in the state file continue to match the selected mapping), making for quick and easy comparison of data without the need for tool or data setup.

- [Creating a New Mapping](#)
- [Reviewing Data Using an Existing Mapping](#)

Creating a New Mapping

To create a new mapping, click the **New** icon. You will be redirected to a new screen.



This screen is where you designate the name of the mapping, the school and scope year, and what data should be excluded.

1. Give the mapping a **Name**.
2. If the source file given to you by the state contains a header row, mark the **Source File Includes Header** checkbox.
3. Select which **School** will have data compared against the source file or to compare against all schools in the district, select All Schools.
4. Select the **Scope Year** of the data being compared.
5. Mark the **No Show** checkbox to exclude all students marked No Show on their enrollment record (optional).
6. Mark the **State Exclude** checkbox to exclude all students marked State Exclude on their enrollment record (optional).
7. Mark the **Students without the Selected ID** checkbox to exclude all students who do not have the appropriate ID assigned (optional).
8. Select which **Enrollment Service Types** will be excluded from data comparison. Any student enrollment records with any of the selected Enrollment Service Types will be excluded from comparison (optional).
9. Select which **Enrollment Start Status** will be excluded from data comparison. Any student enrollment records with any of the selected Enrollment Start Status values will be excluded from comparison (optional).
10. Click the **Choose File** button, locate the state data file from your local hard drive or network and click Open. The file name will appear to the right of the Choose File button.
11. Once all criteria has been entered, click the **Upload & Continue** button.

Data Comparison Wizard

Select the following options that will define the scope of the data to be compared.

Name

Does the source file have a header row?
 Source File Includes Header:

School & Year Options
 School:
 Scope Year:

Exclude Options
 No Show:
 State Exclude:
 Students without the selected ID:

Enrollment Service Type:

Enrollment Start Status:

Find and upload source file

Stud10Sample.csv

Data Comparison Criteria

Now that the file has been uploaded, you must map the uploaded data to the corresponding fields in Campus so data can be compared accurately.

To begin this process, click the **New** icon. The **Name**, **Seq in data file**, and **Map to data field** fields will appear below. During this process, you are mapping one by one the columns of data in the Source File Data section to its corresponding fields in Campus.

1. Enter the **Name** of the data being compared. This name is not dependent upon anything and is merely used as an easy way for you to understand and identify the compared data. In the example below, the Grade column (3) is being mapped to the Enrollment Grade Field thus a name of Grade was given to the mapping.
2. Enter the **Seq in data file** number. This is the column number listed above the column in the Source File Data area corresponding to the data you want to map to a Campus field for data comparison. For example in the image below, a Seq of 3 is entered because the user wants to

compare the Grade column data with the Enrollment Grade field selected. This step is critical in ensuring the right data is compared between the state data file and Campus. Failure to enter proper sequence numbers will result in data comparison errors.

3. Select what Campus field will be mapped to the data file column by selecting a value in the **Map to data field**.

If mapping to a date field, a date format must be selected to ensure accurate report results.

Arizona Users Only: There are five additional fields added to the bottom of this list. Separate mappings must be done for each of these fields and they cannot be combined with any other fields except student identifiers. Adding additional mappings that are not student identifiers will result in false results. When doing an enrollment FTE comparison for students with split enrollments, use these additional fields to parse out or differentiate split enrollments.

4. Click the **Save** icon. The mapping will appear in the window below.
5. Repeat steps 1-4 until all desired data has been mapped.

A mapping of at least one, and only one ID field must be included in order to generate the Data Comparison report.

The screenshot shows the 'Data Comparison Wizard' window. At the top, it says 'Define the columns in the source file that will be used to compare to the Campus database, all other columns in the uploaded document can be ignored. One column must be defined to match to the student's Ed-Fi ID. The left frame contains mappings for the data that you have selected to compare, and the right frame contains a representation of the source data file.'

Metadata: Name: Nate Test Comparison, Source File: C:\CampusDocumentStore\ieBatchAppShare\batchQueue\ieaz\1\2017-09-07-13-26-40\Stud10Sample.csv, Format: Comma Separated Values, Column Count: 22, Row Count: 55103.

Buttons: Save, Delete, New (highlighted with a red box).

Mapping Configuration (left panel):

- Name: Grade
- Seq in data file: 3 (highlighted with a red box)
- Map to data field: Enrollment Grade

Source File Data (right panel):

1	2	3	4
SchoolCTDS	SchoolName	Grade	District Student ID
07-02-80-104	Willis Junior High School (5110)	1	2447
07-02-80-104	Willis Junior High School (5110)	1	2447
07-02-80-104	Willis Junior High School (5110)	1	3854
07-02-80-104	Willis Junior High School (5110)	1	7538
07-02-80-104	Willis Junior High School (5110)	1	7944
07-02-80-104	Willis Junior High School (5110)	1	2975
07-02-80-104	Willis Junior High School (5110)	1	82544896
07-02-80-105	Willis Junior High School (5110)	1	73763488
07-02-80-106	Willis Junior High School (5110)	1	73763488

Buttons: Compare Data, Batch Queue - Compare Data

Establishing Mappings

Once all mappings have been created and saved, click the **Compare Data** button to initiate generation of the comparison file or click the **Batch Queue - Compare Data** button to send the file to the batch queue where it will process in the background.

If you notice an error in the mappings or decide to add/modify mappings, click the **Back to Edit** button at the bottom of the screen.

Initiating Comparison of Data

Once the file finishes processing, it will download to your local hard drive or network as a CSV file. Review the document to understand differences in data between what is entered in Campus and what exists at the State.

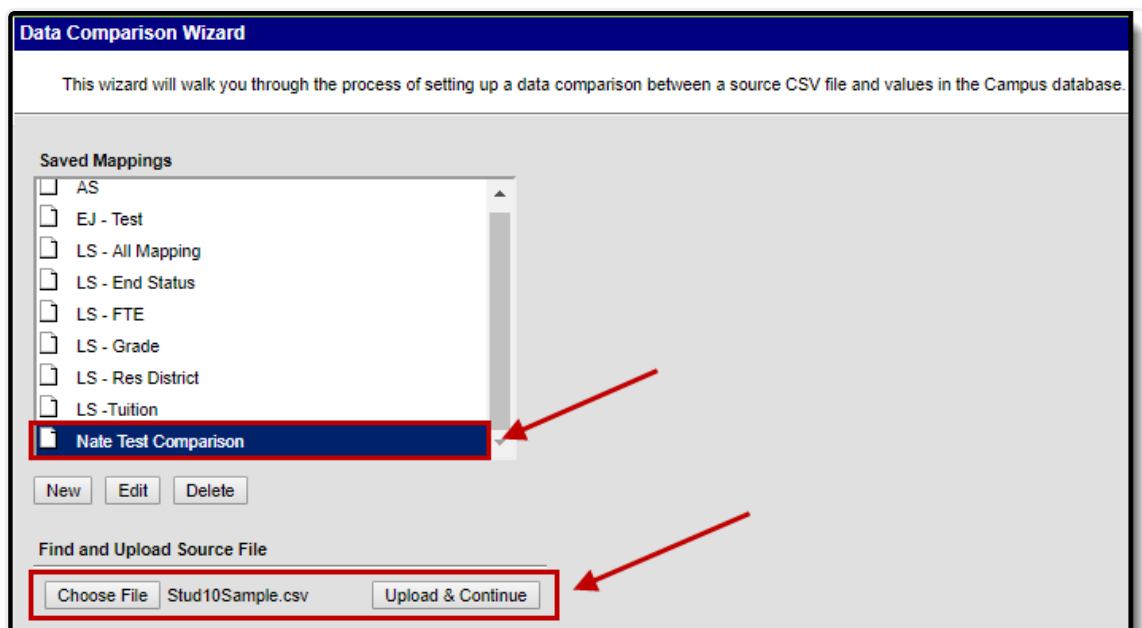
24369015	278576 James	Tester	Ed-Fi ID	24369015	This Student was not found in Ed-Fi
24512930	13122 Kristalin	Tester	Ed-Fi ID	24512930	This Student was not found in Ed-Fi
24512992	258460 Isaac	Tester	Ed-Fi ID	24512992	This Student was not found in Ed-Fi
24521956	18113 Arshia	Tester	Ed-Fi ID	24521956	This Student was not found in Ed-Fi
24523318	39954 Tyler	Tester	Ed-Fi ID	24523318	This Student was not found in Ed-Fi
24527231	281161 Brooklyn	Tester	Ed-Fi ID	24527231	This Student was not found in Ed-Fi
24528481	318334 Bryson	Tester	Ed-Fi ID	24528481	This Student was not found in Ed-Fi
24529105	52226 Azyah	Tester	Ed-Fi ID	24529105	This Student was not found in Ed-Fi
24531894	46161 Skylar	Tester	Ed-Fi ID	24531894	This Student was not found in Ed-Fi
24532051	323072 Lami	Tester	Ed-Fi ID	24532051	This Student was not found in Ed-Fi
24536158	235016 Amanda	Tester	Ed-Fi ID	24536158	This Student was not found in Ed-Fi

Example of a Comparison Report

Reviewing Data Using an Existing Mapping

To quickly view and reconcile data for a state file that has already been given a mapping in the past:

1. Select the mapping from the **Saved Mappings** window.
2. Upload the new state file by clicking the **Choose File** button
3. Locate the file on your local hard drive or network and click the Open button.
4. Click the **Upload & Complete** button. You will be redirected to the mapping screen.



Comparing Data Using an Existing Mapping

Review the existing mappings and if data still properly matches between sequence and field name, click the **Compare Data** or **Batch Queue - Compare Data** fields.

Data Comparison Wizard

Define the columns in the source file that will be used to compare to the Campus database, all other columns in the uploaded document can be ignored. One column must be defined to match to the student's Ed-Fi ID. The left frame contains mappings for the data that you have selected to compare, and the right frame contains a representation of the source data file.

Name: Nate Test Comparison | Source File: C:\CampusDocumentStore\BatchAppShare\batchQueue\ieaz\1\2017-09-07-15-03-30\Stud10Sample.csv | Format: Comma Separated Values | Column Count: 22 | Row Count: 55103

New

Name	Seq	Field Name
School CTDS	1	School CTDS
Grade	3	Enrollment Grade
Ed-Fi ID	5	Ed-Fi ID
Start Date	15	Enrollment Start Date

Source File Data:

1	2	3	4
SchoolCTDS	SchoolName	Grade	District Student ID
07-02-80-104	Willis Junior High School (5110)	1	2447
07-02-80-104	Willis Junior High School (5110)	1	2447
07-02-80-104	Willis Junior High School (5110)	1	3854
07-02-80-104	Willis Junior High School (5110)	1	7538
07-02-80-104	Willis Junior High School (5110)	1	7944
07-02-80-104	Willis Junior High School (5110)	1	2975
07-02-80-104	Willis Junior High School (5110)	1	8254
07-02-80-105	Willis Junior High School (5110)	1	7375
07-02-80-106	Willis Junior High School (5110)	1	7376

Buttons: Compare Data, Batch Queue - Compare Data, Back to Edit

Compare Data

Edit an Existing Mapping

To edit an existing mapping, select the mapping in the **Saved Mappings** window and click the **Edit** button.

Data Comparison Wizard

This wizard will walk you through the process of setting up a data comparison between a source CSV file and values in the Campus database.

Saved Mappings

- AS
- EJ - Test
- LS - All Mapping
- LS - End Status
- LS - FTE
- LS - Grade
- LS - Res District
- LS - Tuition
- Nate Test Comparison

Buttons: New, Edit, Delete

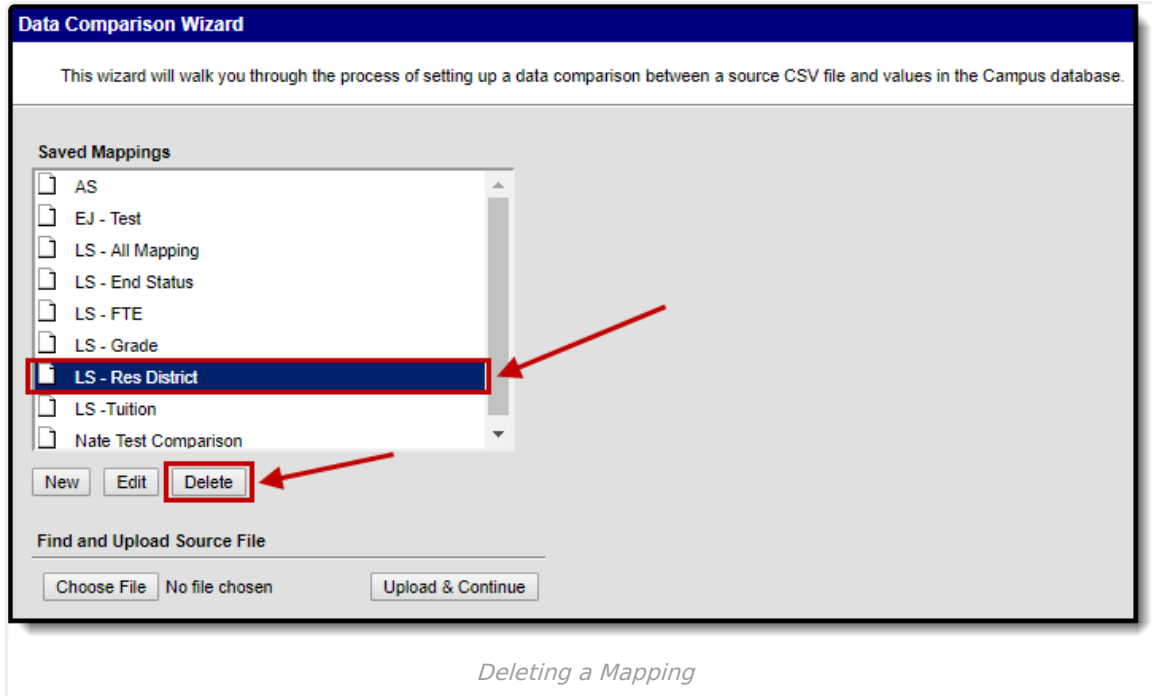
Find and Upload Source File

Choose File | No file chosen | Upload & Continue

Edit a Mapping

Delete a Mapping

To delete an existing mapping, select the mapping in the **Saved Mappings** window and click the **Delete** button.



For Arizona Districts Only: Comparing Data Against AzEDS Reports

Users can use the Ed-Fi Reconciliation tool to compare Ed-Fi data against AzEDS reports. The following are some examples of comparing this data:

- [Core Enrollment Data](#)
- [District of Residence Data](#)
- [Enrollment FTE Data](#)
- [Enrollment Tuition Payer Data](#)

Core Enrollment Data

A Core Enrollment Field Mapping can be used in conjunction with the AzEDS Stud 10 Student Waiver Report: School Enrollment QRG to do a comparison on student Ed-Fi ID, Enrollment Start Date, Enrollment End Date, Enrollment Service Type, Enrollment Start Status, and Enrollment End Status data.

To compare data:

1. Enter the following data into Data Comparison Wizard fields.

2. Upload the AzEDS Stud 10 Student Verification Report: School Enrollment QRG file ([click here for more information on how to generate this file](#)).

Data Comparison Wizard

Select the following options that will define the scope of the data to be compared.

Name

Does the source file have a header row?
 Source File Includes Header:

School & Year Options

School:

Scope Year:

Exclude Options

No Show:

State Exclude:

Students without the selected ID:

Enrollment Service Type:

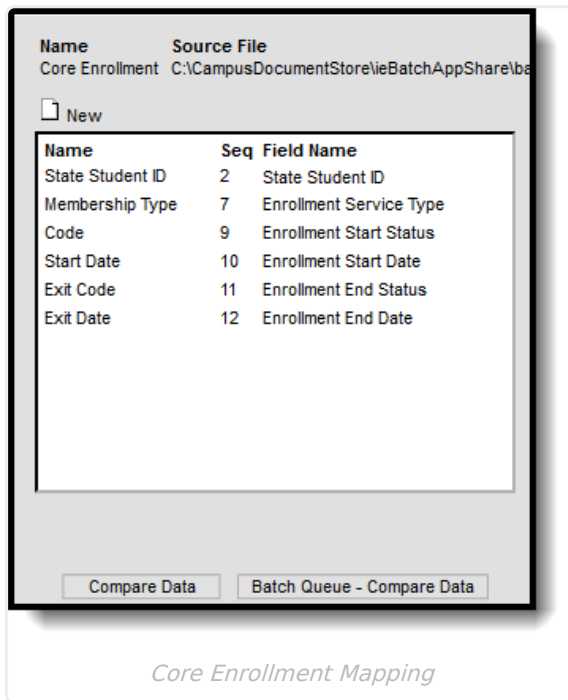
Enrollment Start Status:

Find and upload source file

No file selected.

Core Enrollment Field Values

3. Map fields as show in the image below.



4. Select the **Compare Data** button to generate the report and review core enrollment data.

District of Residence Data

A District of Residence Mapping can be used in conjunction with the AzEDS Stud 10 Student Verification Report: School Enrollment QRG to do a comparison on student State Student ID and District of Residence data.

To compare data:

1. Enter the following data into Data Comparison Wizard fields.
2. Upload the AzEDS Stud 10 Student Verification Report: School Enrollment QRG file ([click here for more information on how to generate this file](#)).

Data Comparison Wizard

Select the following options that will define the scope of the data to be compared.

Name

Does the source file have a header row?
 Source File Includes Header:

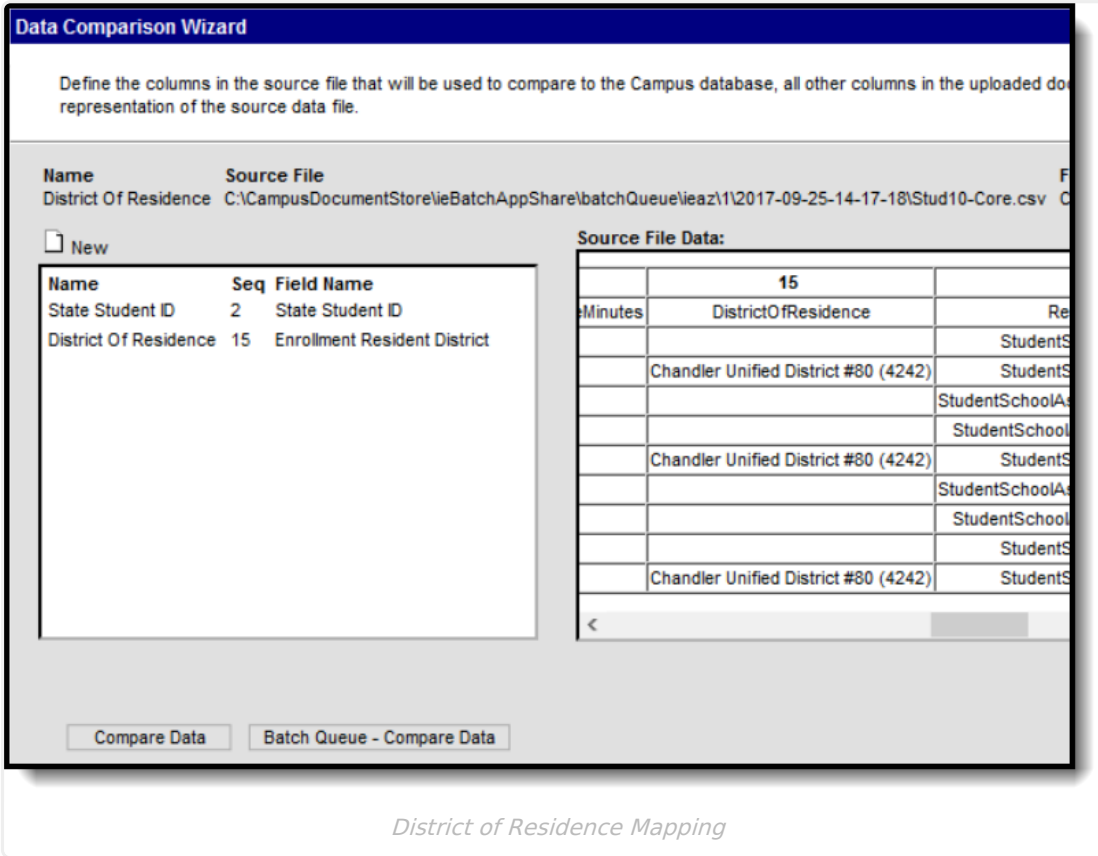
School & Year Options
 School:
 Scope Year:

Exclude Options
 No Show:
 State Exclude:
 Students without the selected ID:
 Enrollment Service Type:
 Enrollment Start Status:

Find and upload source file
 No file selected.

District of Residence Core Values

3. Map fields as show in the image below.



4. Select the **Compare Data** button to generate the report and review core enrollment data.

Enrollment FTE Data

An Enrollment FTE Mapping can be used in conjunction with the AzEDS Stud 10 - FTE Data Verification Report to do a comparison on student State Student ID and FTE data.

To compare data:

1. Enter the following data into Data Comparison Wizard fields.
2. Upload the AzEDS Stud 10 - FTE Data Verification Report file ([click here for more information on how to generate this file](#)).

Data Comparison Wizard

Select the following options that will define the scope of the data to be compared.

Name

Does the source file have a header row?
 Source File Includes Header:

School & Year Options
 School:
 Scope Year:

Exclude Options
 No Show:
 State Exclude:
 Students without the selected ID:
 Enrollment Service Type:
 Enrollment Start Status:

Find and upload source file
 No file selected.

Enrollment FTE Field Values

3. Map fields as show in the image below.

Name	Source File	Format	Column Count	Row C
FTE	C:\CampusDocumentStore\ieBatchAppShare\batchQueue\ieaz\112017-09-25-14-24-53\Stud10-FTE.csv	Comma Separated Values	9	9

Name	Seq	Field Name
State Student ID	2	State Student ID
FTE	8	Enrollment FTE

Source File Data:								
1	2	3	4	5	6	7	8	
DistrictStudentID	StateStudentID	LastName	FirstName	MiddleName	StartDate	EndDate	FTE	
111111	111111	Student A	Test		7/24/2016		1	0e146
222222	222222	Student B	Veronica		7/25/2016	08/25/2016	1	ba745
222222	222222	Student B	Veronica		9/26/2016		0.5	71df1
333333	333333	Student C	Alan		3/6/2017		1	281eb
444444	444444	Student D	Ricardo		7/22/2016		1	62076
555555	555555	Student E	Logan		7/25/2016		1	9e1e9
666666	666666	Student F	William		7/25/2016		1	b5865
777777	777777	Student G	Mikaile		7/25/2016		1	be0ab

Enrollment FTE Mapping

4. Select the **Compare Data** button to generate the report and review core enrollment data.

Enrollment Tuition Payer Data

An Enrollment Tuition Payer Mapping can be used in conjunction with the AzEDS Stud 10 -Tuition Payer Data Verification Report to do a comparison on student State Student ID and Tuition Payer Code data.

To compare data:

1. Enter the following data into Data Comparison Wizard fields.
2. Upload the AzEDS Stud 10 -Tuition Payer Data Verification Report file ([click here for more information on how to generate this file](#)).

Data Comparison Wizard

Select the following options that will define the scope of the data to be compared.

Name

Does the source file have a header row?

Source File Includes Header:

School & Year Options

School:

Scope Year:

Exclude Options

No Show:

State Exclude:

Students without the selected ID:

Enrollment Service Type:

Enrollment Start Status:

Find and upload source file

No file selected.

Enrollment Tuition Payer Field Values

3. Map fields as show in the image below.

Name	Source File	Format	Column Count	Row Count
Tuition Payer	C:\CampusDocumentStore\ieBatchAppShare\batchQueue\ieaz\1\2017-09-25-14-28-31\Stud10-TuitionPayer.csv	Comma Separated Values	9	9

Name	Seq	Field Name
State Student ID	2	State Student ID
Tuition Payer Code	8	Enrollment Tuition Payer

1	2	3	4	5	6	7	8	
DistrictStudentID	StateStudentID	LastName	FirstName	MiddleName	StartDate	EndDate	Tuition Payer Code	
111111	111111	Student A	Test		7/24/2016		1	0e1469c8-56a1-
222222	222222	Student B	Veronica		7/25/2016	08/25/2016	1	ba7459dc-48f3-
222222	222222	Student B	Veronica		9/26/2016		2	71df1671-63ae-
333333	333333	Student C	Alan		3/6/2017		1	281ebfc0-4114-
444444	444444	Student D	Ricardo		7/22/2016		1	62078a2b-2999-
555555	555555	Student E	Logan		7/25/2016		1	9e1e9b6a-d899-
666666	666666	Student F	William		7/25/2016		1	b58653b9-1610-
777777	777777	Student G	Mkaille		7/25/2016		1	be0ab02e-ced0-

Enrollment Tuition Payer Mapping

4. Select the **Compare Data** button to generate the report and review core enrollment data.