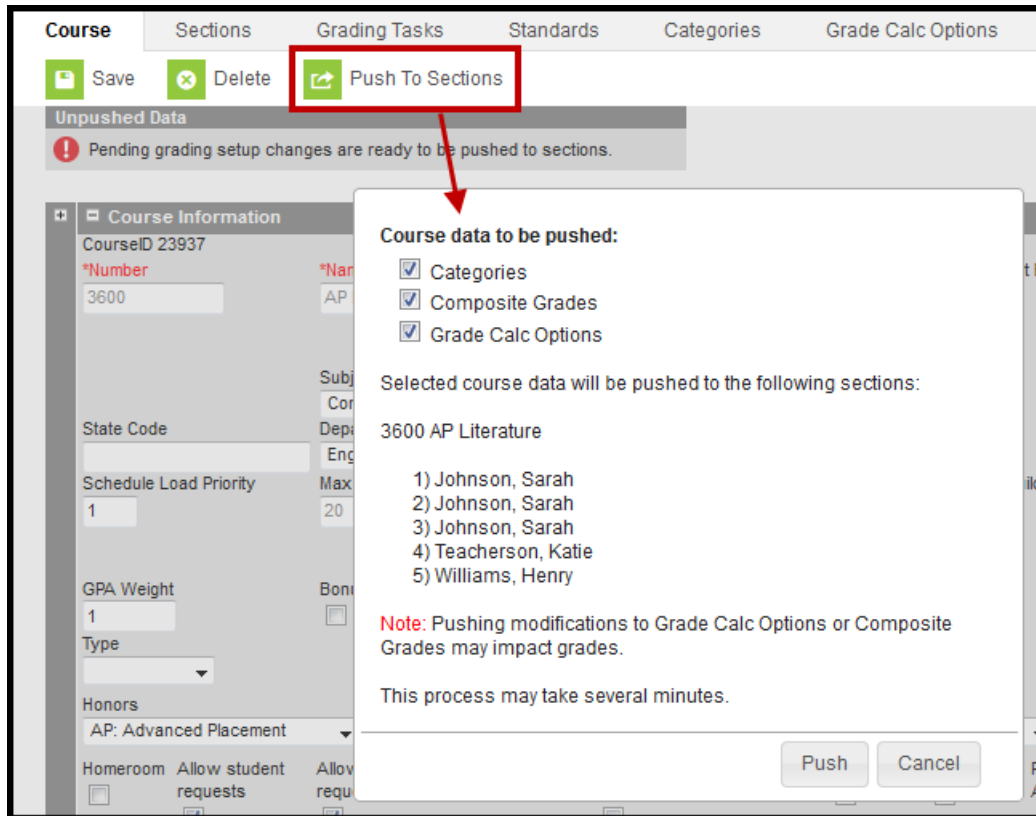


# Push to Sections

Last Modified on 10/22/2022 10:03 am CDT

The Push to Sections option pushes grading setup from a course to its sections.

Districts should use caution pushing changes to sections once classes are in session as changes may affect grade calculations.



*Use the Push to Section option to push grading setup data to a course's sections.*

Access to this option is governed by a specific **Push to Section** tool right. Rights are granted by [user](#) or [user groups](#) and are found in Scheduling > Courses > Course > Push to Section.

## Pushing Grading Setup Data

1. Click **Push to Sections**.
2. In the pop-up that opens, **Categories**, **Composite Grades**, and **Grade Calc Options** are selected by default. Unselect any course data you don't want to push.
3. Sections to be updated are listed in the pop-up with their teachers.
4. Click **Push** to update sections with grading data from the course.

## Additional Information

- If a category pushed from a course and a category created by the teacher in the section have the same name, the teacher's category is appended with (1) to distinguish it from the

category from the course.

- Categories pushed to sections are locked from editing by teachers.
  - Be aware that changes to calculations in Grade Calc Options and Composite grading may result in changes to students' grades once classes are in session.
-