

Generate Section Templates

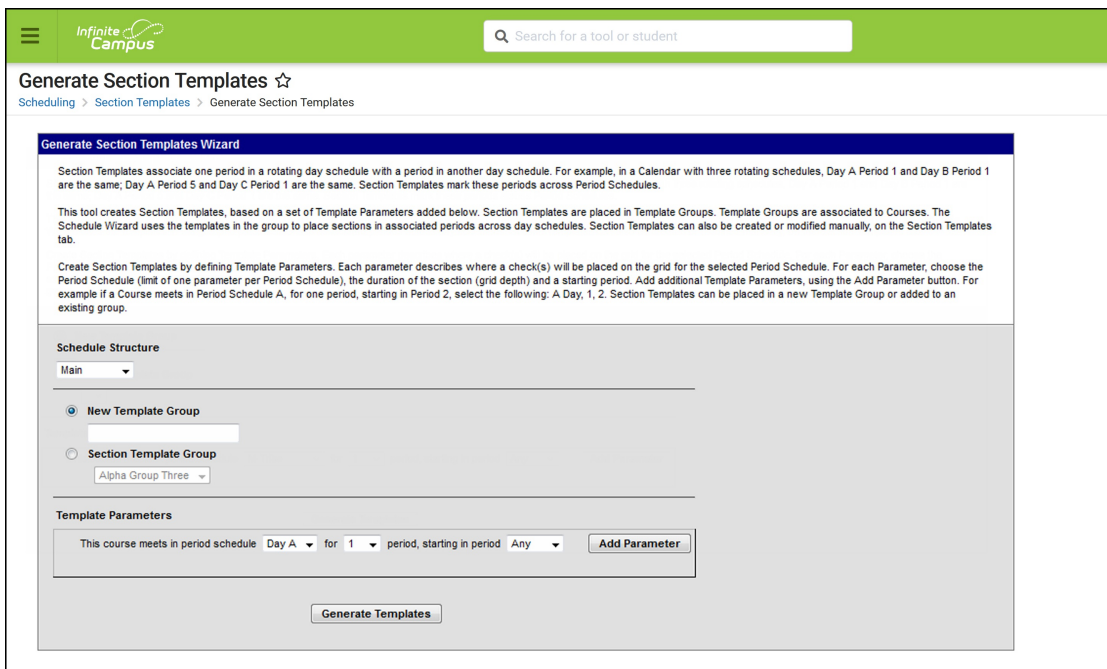
Last Modified on 10/22/2022 10:03 am CDT

[Create Template Groups](#) | [Set Parameters for Section Templates](#) | [Next Steps](#)

Classic View: [Scheduling](#) > [Section Templates](#) > [Generate Section Templates](#)

Search Terms: [Generate Section Templates](#)

The Generate Section Templates tool allows users to create Section Template Groups and Section Templates, and assign those templates to periods and days in the Section Schedule Placement grid based on set parameters. This Template Wizard can be used instead of manually creating the [Section Templates](#). Or, use the Section Template tool to create Template Groups and use the Section Template Wizard to create and assign Section Templates.



The screenshot shows the 'Generate Section Templates Wizard' interface. At the top, there is a search bar and a navigation breadcrumb: 'Scheduling > Section Templates > Generate Section Templates'. The main content area is titled 'Generate Section Templates Wizard' and contains the following sections:

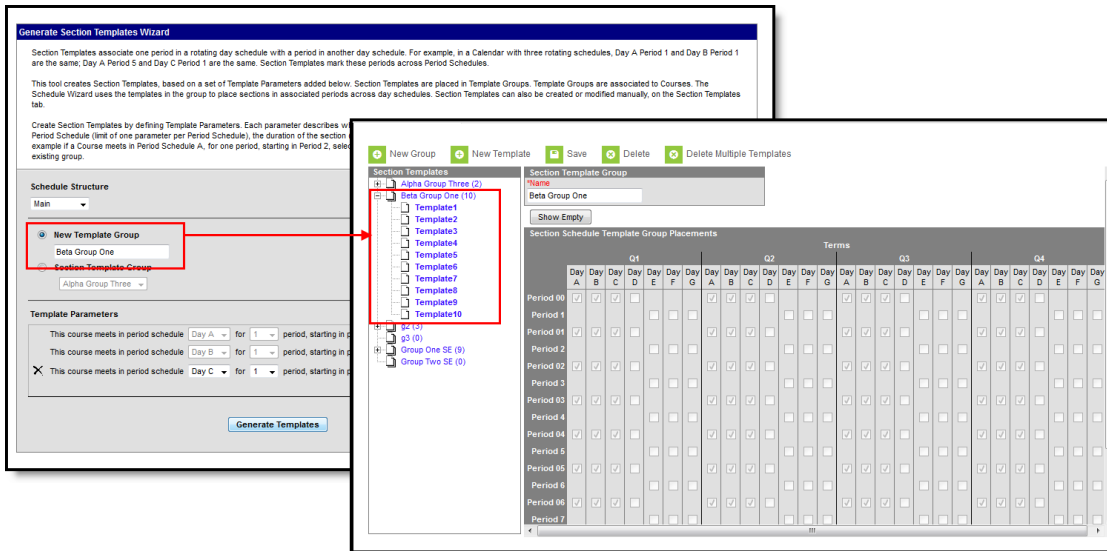
- Introduction:** A paragraph explaining that Section Templates associate one period in a rotating day schedule with a period in another day schedule. It provides an example: 'in a Calendar with three rotating schedules, Day A Period 1 and Day B Period 1 are the same; Day A Period 5 and Day C Period 1 are the same. Section Templates mark these periods across Period Schedules.'
- Tool Description:** A paragraph stating that the tool creates Section Templates based on a set of Template Parameters. It notes that Section Templates are placed in Template Groups, which are associated to Courses. The wizard uses these templates to place sections in associated periods across day schedules.
- Parameter Definition:** A paragraph explaining that parameters describe where checks will be placed on the grid for the selected Period Schedule. It gives an example: 'if a Course meets in Period Schedule A, for one period, starting in Period 2, select the following: A Day, 1, 2. Section Templates can be placed in a new Template Group or added to an existing group.'
- Schedule Structure:** A section with a dropdown menu set to 'Main'. Below it are two radio button options:
 - New Template Group**: This option is selected, and there is an empty text input field for the group name.
 - Section Template Group**: This option is unselected, and there is a dropdown menu showing 'Alpha Group Three'.
- Template Parameters:** A section with a form that reads: 'This course meets in period schedule Day A for 1 period, starting in period Any'. There is an 'Add Parameter' button to the right of this form.
- Generate Templates:** A button at the bottom center of the wizard.

Generate Section Templates Wizard

Create Template Groups

1. Verify the correct School Year and Calendar are selected in the Campus toolbar.
2. Select the **Schedule Structure** for the selected calendar.
3. Enter the name of the Template Group in the **New Template Group** field.
4. Select the correct parameters for where the section templates should be marked. Add multiple parameters by choosing the **Add Parameter** button.
5. Click the **Generate Templates** button. A message displays indicating the new group was created and associated templates were created.

To verify, navigate to the Section Templates tab and view the newly created group.



Verification of Newly Created Templates

Set Parameters for Section Templates

The **Template Parameters** place the checkboxes in the Section Placement grid. For each parameter, choose the Period Schedule (Day A, Day B, etc.), the duration of the section (number of periods long), and in which starting period. For example if a Course meets in Period Schedule A, for one period, starting in Period 2, select the following: A Day, 1, 2. Section Templates can be placed in a new Template Group or added to an existing group.

Each parameter builds off of the previous parameter.

- Only one parameter can be assigned for a period schedule.
- The total number of parameters cannot exceed the total number of period schedules. If there are seven period schedules, only seven parameters can be added.
- To remove parameters, begin with the last entered parameter.
- If the Period Schedule option is set to All, a period length and starting period cannot be set.

1. Select the **Schedule Structure** to which these templates belong, based on the selected calendar in the Campus toolbar.
2. Select to which **Section Template Group** these parameters apply.
3. Choose the parameters for each day schedule, length of period, and the starting period. Any, Next, Same and Previous can be selected.
4. Click the **Add Parameter** to add additional parameters. The parameters are applied to the groups. Verify their placement by viewing the Section Templates tab.

In a calendar with seven period schedules and the templates are assigned to periods in sequential order, the Template Parameters would look like this:

Generate Section Templates Wizard

Section Templates associate one period in a rotating day schedule with a period in another day schedule. For example, in a Course Schedule, Day A Period 5 and Day C Period 1 are the same. Section Templates mark these periods across Period Schedules.

This tool creates Section Templates, based on a set of Template Parameters added below. Section Templates are placed in the Section Template Wizard uses the templates in the group to place sections in associated periods across day schedules. Section Template tab.

Create Section Templates by defining Template Parameters. Each parameter describes where a check(s) will be placed on the Period Schedule (limit of one parameter per Period Schedule), the duration of the section (grid depth) and a starting period. An example if a Course meets in Period Schedule A, for one period, starting in Period 2, select the following: A Day, 1, 2. Section Template existing group.

Schedule Structure

Main ▼

New Template Group

Section Template Group

Beta Group One ▼

Template Parameters

This course meets in period schedule	Day A ▼	for	1 ▼	period, starting in period	00 ▼
This course meets in period schedule	Day B ▼	for	1 ▼	period, starting in period	Next ▼
This course meets in period schedule	Day C ▼	for	1 ▼	period, starting in period	Next ▼
This course meets in period schedule	Day D ▼	for	1 ▼	period, starting in period	Next ▼
This course meets in period schedule	Day E ▼	for	1 ▼	period, starting in period	Next ▼
This course meets in period schedule	Day F ▼	for	1 ▼	period, starting in period	Next ▼
<input checked="" type="checkbox"/> This course meets in period schedule	Day G ▼	for	1 ▼	period, starting in period	Next ▼

Set Parameters for Seven Period Schedules

Next Steps

- [Mass Assign Section Templates to Courses](#)
- [Manually Assign Section Templates to Courses](#)