

# Data Options for Data Warehouse

Last Modified on 10/22/2022 10:07 am CDT

[Database Views](#) | [Adding Views to be Flattened](#) | [Views Not Available for Flattening](#) | [Removing Views from Flattening](#)

**This tool is only available to districts/states that have data warehousing functionality enabled.**

**PATH:** *System Administration > Data Utilities > Data Warehouse Settings > Data Options*

**SEARCH TERM:** *Data Options*

The Data Options tool allows a system administrator the ability to manually add/remove specific database views from being "flattened" by the data warehouse optimization process.

## Data Options ☆

System Settings > Data Warehouse > Data Options

Save

Views moved to the right will be 'flattened' during the data warehouse refresh process. Reports that run against a flattened view generate much faster, but the process of flattening a view is database intensive, increases the time it takes to generate the warehouse, and increases the size of the warehouse. It is recommended that users only include views that are used frequently. Views that appear gray are not available for flattening but are, along with the remaining unselected views, still accessible in the warehouse.

Database Views	Views to Flatten
<ul style="list-style-type: none"> <li>CCS_calendarUnits</li> <li>CCS_Counselor</li> <li>CCS_disability1</li> <li>CCS_disability2</li> <li>CCS_DV_CustomStudentSummary</li> <li>CCS_specialEdSetting</li> <li>CCS_specialEdStatus</li> <li>CCS_SpecialEdStudentData</li> <li>CCS_TranscriptWithCurrentCourses</li> <li>CCS_view_class</li> <li>LessonPlanActivity</li> <li>v_AccountManagement</li> <li>v_Address</li> <li>v_AdHoc_mnHispanicSubcategories</li> <li>v_AdHoc_mnRaceSubcategories</li> <li>v_AdHoc_waHispanicSubcategories</li> <li>v_AdHoc_waRaceSubcategories</li> <li>v_AdHocADA</li> <li>v_AdHocADAHist</li> <li>v_AdHocEarlyWarningScore</li> <li>v_APCheckPayment</li> <li>v_APVendor</li> <li>v_ARCustomer</li> <li>v_ARCustomerCreditAvailable</li> </ul>	<ul style="list-style-type: none"> <li>activeTrial</li> <li>attendanceCode</li> <li>calendarStructure</li> <li>cube_attendance</li> <li>cube_behavior</li> <li>cube_enrollment</li> <li>cube_grades</li> <li>cube_roster</li> <li>cube_sped</li> <li>cube_student</li> <li>cube_transcript</li> <li>individual</li> <li>ISEP_3_4_5</li> <li>ISEP_3_4_5_development</li> <li>ISEP_3_4_5_Instructional</li> <li>ISEP_ADM_Instructional</li> <li>ISEP_Allotment</li> <li>ISEP_Basic</li> <li>ISEP_Instructional_final</li> <li>ISEP_Res_Final</li> <li>ISEP_residential2</li> <li>ISEP_SchoolAdj</li> <li>ISEP_SchoolECR_IRG</li> <li>ISEP_Totals</li> <li>sectionStaff</li> </ul>

Add
Remove

*Data Options Tab*

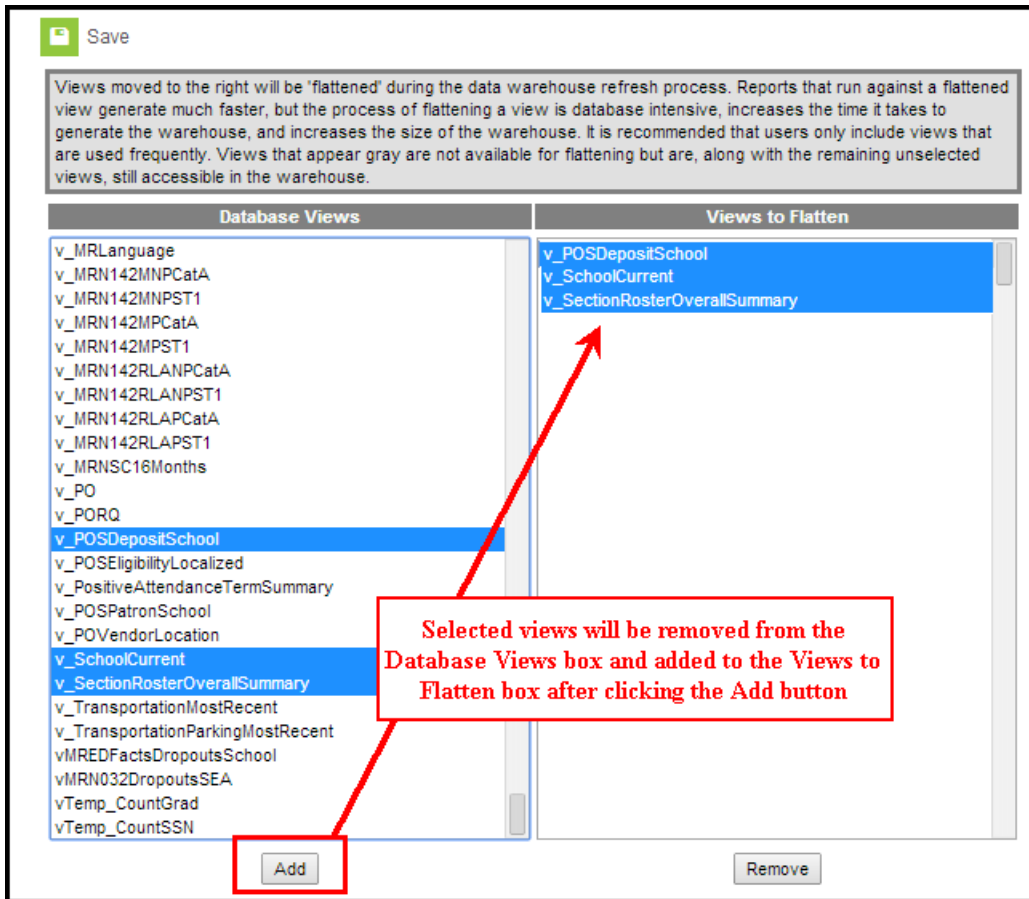
## Database Views

All views existing in the live database (including Campus views and custom district views) are displayed in the **Database Views**. These views are auto-detected by the data warehouse process.

## Adding Views to be Flattened

Flattened views yield faster results when querying/reporting from the data warehouse. However, the number of views selected for the flattening process directly affects the amount of time it takes to generate a data warehouse backup. Infinite Campus recommends selecting the most commonly used views for inclusion in the flattening process.

Views may be added to the optimization process at any time by adding them to the **Views to Flatten** box. The views that are currently flattened before inclusion in the data warehouse are shown in the **Views to Flatten** box. Views that are not flattened before inclusion in the data warehouse are listed in the **Database Views** box.



### Adding Views to Flattening Process

To add views to the data warehouse optimization process:

1. Select the views to be flattened from the Database Views box.

To select multiple views hold the CTRL or SHIFT keys while clicking on views. Views shown in gray-colored font cannot be flattened. Please refer to the Views Not Available for Flattening section for more information.

2. Click the **Add** button. The selected views will appear in the Views to Flatten box.
3. Click **Save** to save the changes.

The added views will be flattened/optimized by the data warehouse the next time a backup is generated.

## Views Not Available for Flattening

Several complex views cannot be flattened by the data warehouse optimization process. These views appear in gray-colored font in the Database Views box. The following views are not available for flattening:

- v\_AttDailyDetail
- v\_AttDailyExactDetail
- v\_AttDailyTermCount
- v\_AttendanceCourseCount
- v\_AttendanceSectionCount
- v\_AttendanceSectionTermSummary
- v\_GradebookActivityDetail
- v\_SectionRosterAttSummary

Views excluded from the flattening process can still be selected from the data warehouse backup, but reporting off of these views will likely be system-intensive.

## Removing Views from Flattening

Removing unnecessary views from the flattening process may shorten the generation time of the data warehouse backup.

Views may be removed from the optimization process at any time by removing them from the **Views to Flatten** box. The views that are currently flattened before inclusion in the data warehouse are shown in the **Views to Flatten** box. Views that are not flattened before inclusion in the data warehouse are listed in the **Database Views** box.

Save

Views moved to the right will be 'flattened' during the data warehouse refresh process. Reports that run against a flattened view generate much faster, but the process of flattening a view is database intensive, increases the time it takes to generate the warehouse, and increases the size of the warehouse. It is recommended that users only include views that are used frequently. Views that appear gray are not available for flattening but are, along with the remaining unselected views, still accessible in the warehouse.

Database Views	Views to Flatten
MR151CalculateLEA	activeTrial
MR_RB_PartialEnrollments	attendanceCode
MR_RB_TownSAU	calendarStructure
MR_RB_TownSAU1	ChangeUsersForNewYear
MRAccessForELLSPreDALL	cube_attendance
<b>cube_transcript</b>	cube_behavior
MRAFE2ProfRead	cube_enrollment
MRAFE3ProfRead	cube_grades
MRAFE4ProfRead	cube_roster
MRAFE5ProfRead	cube_sped
MRAFE6ProfMath	cube_student
MRAFE6ProfRead	<b>cube_transcript</b>
MRAIIAssessmentResults	individual
MRAIICohortDataFV	InvalidEnrollments
MRAIICohortDataFV5	ISEP_3_4_5
MRAIICohortDataV5	ISEP_3_4_5_development
MRAIExpulsions	
MRAIIImmigrantIdentities	
MRAISAU	
MRAISchoolsPY	
MRAOS92FRAM	
MRAOS92Oct1MealStatus	
MRApril1LEP	ISEP_residentialz
MRApril1LEPStatus	ISEP_SchoolAdj
MRApril1MealStatus	ISEP_SchoolIECR_IRG

Selected views will be removed from the Views to Flatten box and returned to the Database Views box after clicking the Remove button

Add Remove

### Removing Views from Flattening Process

To remove views from the data warehouse optimization process:

1. Select the views to be removed from the flattening process from the Views to Flatten box.

To select multiple views hold the CTRL or SHIFT keys while clicking on views.

2. Click the **Remove** button. The selected views will be moved to the Database Views box.
3. Click **Save** to save the changes.

The removed views will not be flattened/optimized by the data warehouse the next time a backup is generated.