

Student Linker

Last Modified on 06/05/2024 1:19 pm CDT

As of Release Pack .1701, this tool will no longer be available once an LDAP configuration has been configured and enabled via the [LDAP Authentication](#) tab.

Please use the [User Account Type Wizard](#) to mass link user accounts to LDAP authentication.

[Prerequisites](#) | [Linking All Student Accounts](#) | [Linking All Staff Accounts](#)

PATH: [System Administration](#) > [User Security](#) > [LDAP Management](#) > [Student Linker](#)

The Student Linker tool allows system administrators to link all Campus student or staff accounts to LDAP accounts for a specific calendar or school year.

For detailed information about LDAP and how Campus connects user accounts to LDAP, view the [LDAP Authentication](#) article.

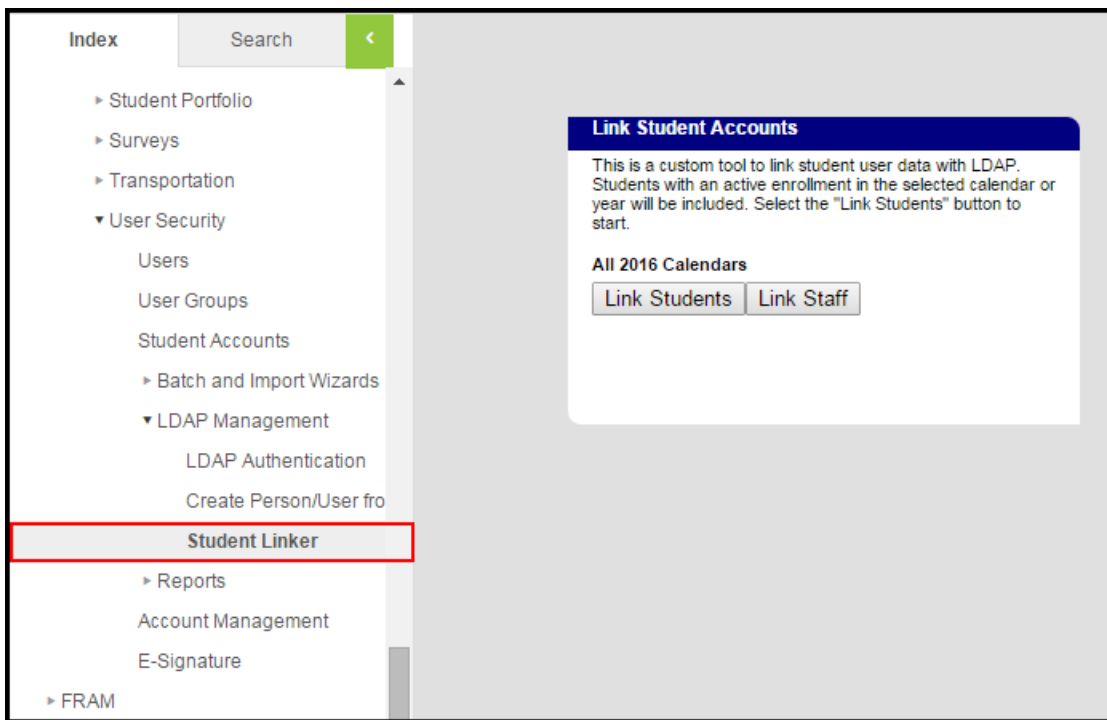
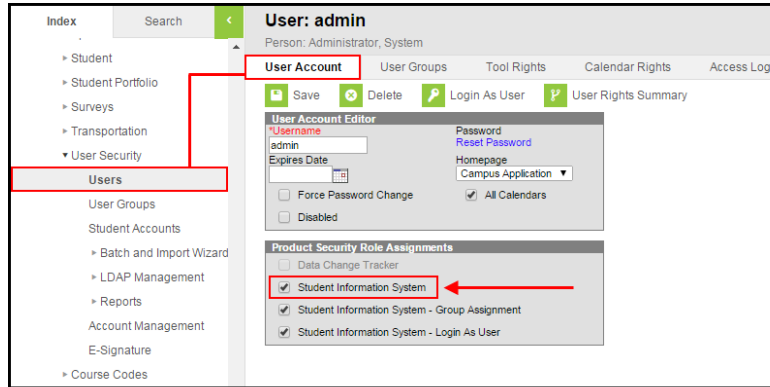


Image 1: Student Linker Tool

Prerequisites

In order to access and properly use the Student Link tool, you must first have the following items:

- LDAP must be [configured and enabled](#) for your school/district.
- Staff and students must have a username in Campus that matches their username in LDAP in order to successfully link the Campus account to the LDAP account.
- You must have a [Product Security Role Assignment](#) of '**Student Information System**' (see image below). You cannot assign tool rights for this tool.



Linking All Student Accounts

To link all student accounts within a calendar (or all calendars in a district) to LDAP, select a calendar in the Campus toolbar at the top of the screen and click the **Link Students** icon (see Image 2).

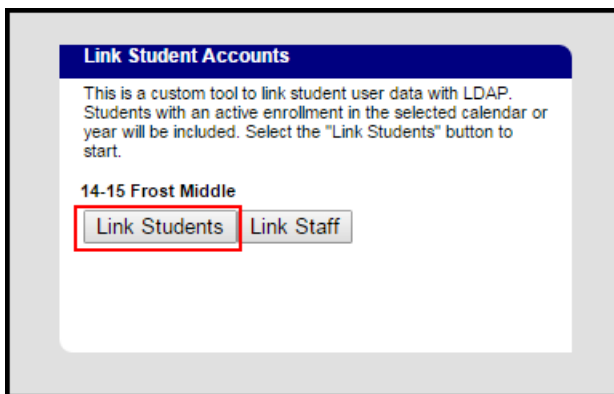


Image 2: Linking Student Accounts to LDAP

Once account linking has finished processing, the tool updates and indicates how many students were linked and how many were unable to be matched between Campus and LDAP (No Match Found) (see Image 3).



Image 3: LDAP Link Results

If you would like to look up which students were not successfully matched to LDAP, create the following filter within the [Filter Designer Query Wizard](#) tool (Image 4):

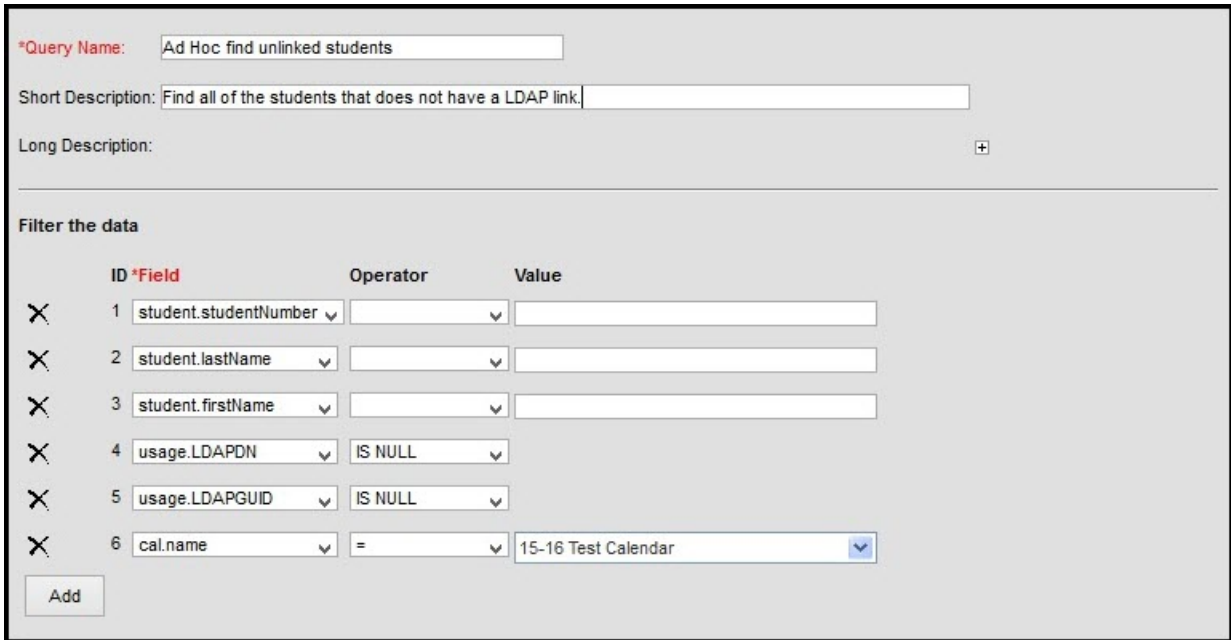


Image 4: Query of Unlinked Student Accounts

Linking All Staff Accounts

To link all staff accounts within a calendar (or all calendars in a district) to LDAP, select a calendar in the Campus toolbar at the top of the screen and click the **Link Staff** icon (see Image 5).

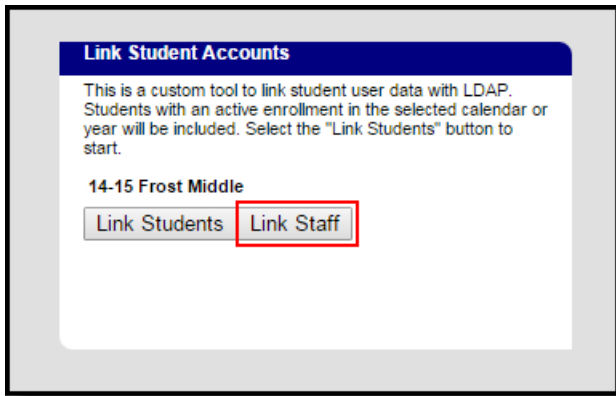


Image 5: Linking Staff Accounts to LDAP

Once account linking has finished processing, the tool updates and indicates how many staff were linked and how many were unable to be matched between Campus and LDAP (No Match Found) (see Image 6).

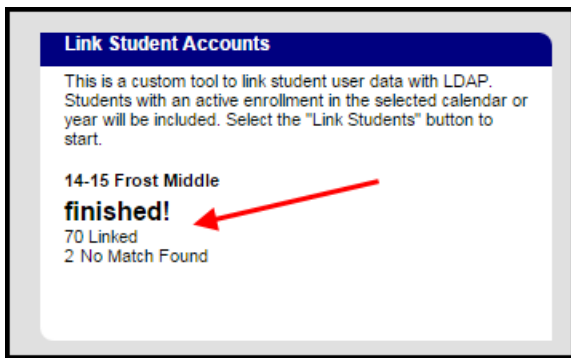


Image 6: LDAP Link Results

If you would like to look up which staff were not successfully matched to LDAP, create the following filter within the [Filter Designer Query Wizard](#) tool (Image 7):

The cal.name field can be found by going to Person > Staff > Teaching Assignment > School Calendar > Name

***Query Name:**

Short Description:

Long Description:

Filter the data

	ID *Field	Operator	Value
X	1 individual.staffNumber		
X	2 individual.lastName		
X	3 individual.firstName		
X	4 usage.LDAPDN	IS NULL	
X	5 usage.LDAPGUID	IS NULL	
X	6 cal.name	=	15-16 Test Calendar

Image 7: Query of Unlinked Staff Accounts