

Title 1 Extract (Colorado)

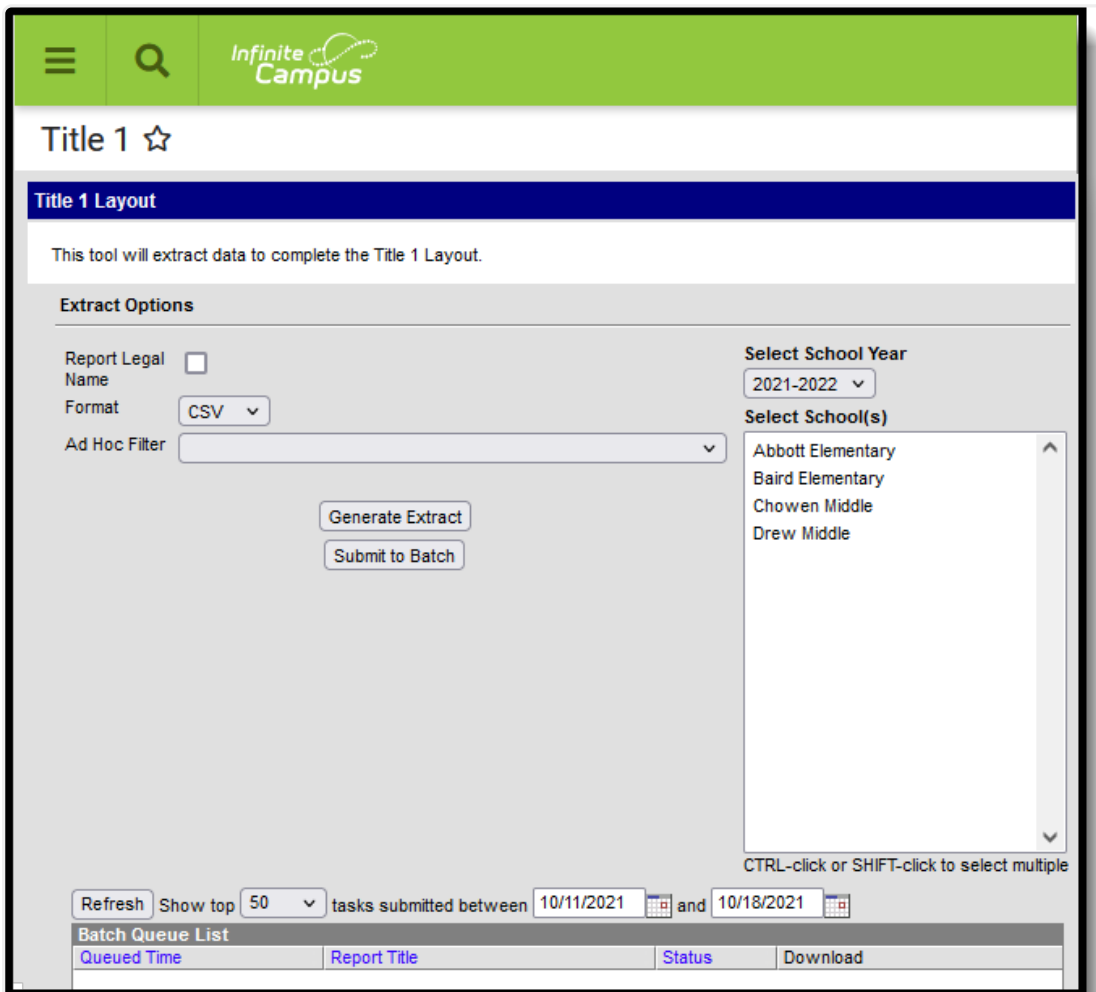
Last Modified on 10/22/2022 10:16 am CDT

[Report Logic](#) | [Report Editor](#) | [Generate the Report](#) | [Report Layout](#)

Classic View: [CO State Reporting](#) > [Data Pipeline](#) > [Title 1](#)

Search Terms: Title 1

The Title 1 Data Pipeline report identifies students who receive Title 1 targeted assistance funding. Only students receiving services funded by the Title 1 targeted assistance monies funds are included in the report.



Title 1 Extract

Report Logic

Students who qualify for Title 1 Services at any point during the reporting school year report.

One record is reported for all students who have a Title 1 Service record associated with the school selected in the report editor and enrolled in the selected calendar year. If a student has

more than one eligible Title 1 Service, only 1 record reports for all eligible selections on the report. If a student has more than one enrollment with eligible Title 1 services, one record reports per enrollment.

Report Editor

The following fields are available for selection on the Title 1 Report Editor.

Field	Description
Report Legal Name	When marked, the student's name and gender report from the Protected Identity Information section on the student's Identities record.
Format	The School Association report can be generated in either CSV or HTML formats.
Ad hoc Filter	Select a saved ad hoc filter to only include those students in the filter in the report, assuming those students meet the reporting logic and business rules of this report.
Select School Year	Select a school year in which to generate the report.
Calendar Selection	At least one calendar needs to be selected in order to generate the report. Reports can be selected by Active Year, School or Year.
Report Generation	The extract can be generated immediately using the Generate Report button. Or, use the Submit to Batch button to select when the report is generated. See the Batch Queue article for more information on this functionality.

Generate the Report

1. Mark the Report Legal Name checkbox, if desired.
2. Select the **Format** for the report.
3. If desired, select an **Ad hoc Filter**.
4. Select the **School Year** in which to run the report.
5. Select the desired **Calendar(s)** from which to report Title 1 data.
6. Click the **Generate Extract** button, or use the **Submit to Batch** button. The report generates in the selected format.

	A	B	C	D	E	F	G	H	I	J	K	L
1	DistrictCode	SchoolBuildingCode	SASID	FirstName	LastName	Sex	BirthDate	Mathema	ReadingLa	Science	SocialStuc	Vocational
2	140	3930	123456789	Zelda	Student	1	12021995	0	0	0	0	1
3	140	3930	234567890	Uri	Student	2	6021995	1	1	0	0	0
4	140	3930	345678901	Wanda	Student	1	12021995	0	0	0	0	1
5	140	3930	456789012	Timothy	Student	2	6021995	1	1	0	1	0
6	140	3930	567890123	Miranda	Student	1	12021995	0	0	1	0	1
7	140	3930	678901234	Clive	Student	2	6021995	1	1	0	0	0
8												
9												
10												

Title 1 Extract - CSV Format

CO Data Pipeline Title 1 Layout Records:2									
DistrictCode	SchoolBuildingCode	SASID	FirstName	LastName	Sex	BirthDate	Mathematics	ReadingLanguageArts	
0140	3930	123456789	Zelda	Student	01	12021995	0	0	
0140	3930	234567890	Uri	Student	02	06021995	1	1	
0140	3930	345678901	Wanda	Student	01	12021995	0	0	
0140	3930	456789012	Timothy	Student	02	06021995	1	1	
0140	3930	567890123	Miranda	Student	01	12021995	0	0	
0140	3930	678901234	Clive	Student	02	06021995	1	1	

Title 1 Extract - HTML Format

Report Layout

Data Element	Description	Location
District Code	The number assigned to a school district by the state department of education. <i>Numeric, 4 digits</i>	System Administration > Resources > District Information > District Information > State District Number District.number
School Code	Number assigned to the school building by the Department of Education. <i>Numeric, 4 digits</i>	System Administration > Resources > School > State School Number School.number
SASID	A unique number assigned to a student by the Department of Education. <i>Numeric, 10 digits</i>	Census > People > Demographics > Person Identifiers > Student State ID Person.stateID

Data Element	Description	Location
First Name	<p>Reports the student's first name.</p> <p>When the Report Legal Name checkbox is marked, the student's First Name reports from the Legal First Name field.</p> <p><i>Alphanumeric, 30 characters</i></p>	<p>Census > People > Demographics > Person Information > First Name</p> <p>Identity.first Name</p> <hr/> <p>Census > People > Identities > Protected Identity Information > Legal First Name</p> <p>Identity.legalFirstName</p>
Last Name	<p>Reports the student's last name.</p> <p>When the Report Legal Name checkbox is marked, the student's Last Name reports from the Legal Last Name field.</p> <p><i>Alphanumeric, 30 characters</i></p>	<p>Census > People > Demographics > Person Information > Last Name</p> <p>Identity.last Name</p> <hr/> <p>Census > People > Identities > Protected Identity Information > Legal Last Name</p> <p>Identity.legalLastName</p>
Gender	<p>Reports the student's gender.</p> <ul style="list-style-type: none"> • 01 - Female • 02 - Male <p>When the Report Legal Name checkbox is marked, the student's Gender reports from the Legal Gender field.</p> <p><i>Numeric, 2 digits</i></p>	<p>Census > People > Demographics > Person Information > Gender</p> <p>Identity.gender</p> <hr/> <p>Census > People > Identities > Protected Identity Information > Legal Gender</p> <p>Identity.legalGender</p>
Birth Date	<p>Student's date of birth.</p> <p><i>Date field, 8 characters (MMDDYYYY)</i></p>	<p>Census > People > Demographics > Person Information > Birth Date</p> <p>Identity.birthDate</p> <hr/> <p>Census > People > Identities > Identities Editor > Birth Date</p> <p>Identity.birthDate</p>

Data Element	Description	Location
Services - Mathematics	Indicates the student receives Title 1 Services for Mathematics. <ul style="list-style-type: none"> • Reports 0 when Mathematics is not selected. • Reports 1 when Mathematics is selected. <i>Numeric, 1 digit</i>	Student Information > Program Participation > Title 1 > Instructional Services > Mathematics Title1.title1Services
Services - Reading/ Language Arts	Indicates the student receives Title 1 Services for Reading/Language Arts. <ul style="list-style-type: none"> • Reports 0 when Reading/Language Arts is not selected. • Reports 1 when Reading/Language Arts is selected. <i>Numeric, 1 digit</i>	Student Information > Program Participation > Title 1 > Instructional Services > Reading/Language Arts Title1.title1Services
Services - Science	Indicates the student receives Title 1 Services for Science. <ul style="list-style-type: none"> • Reports 0 when Science is not selected. • Reports 1 when Science is selected. <i>Numeric, 1 digit</i>	Student Information > Program Participation > Title 1 > Instructional Services > Science Title1.title1Services
Services - Social Studies	Indicates the student receives Title 1 Services for Social Studies. <ul style="list-style-type: none"> • Reports 0 when Social Studies is not selected. • Reports 1 when Social Studies is selected. <i>Numeric, 1 digit</i>	Student Information > Program Participation > Title 1 > Instructional Services > Social Studies Title1.title1Services
Services - Vocational/ Career	Indicates the student receives Title 1 Services for Vocational/Career. <ul style="list-style-type: none"> • Reports 0 when Vocational/Career is not marked. • Reports 1 when Vocational/Career is marked. <i>Numeric, 1 digit</i>	Student Information > Program Participation > Title 1 > Instructional Services > Career and Technical Education Title1.title1Services

Data Element	Description	Location
Other Instructional Services	<p>Indicates the student receives Title 1 Services for Other Instructional Services.</p> <ul style="list-style-type: none"> • Reports 0 when Other Instructional Services is not selected. • Reports 1 when Other Instructional Services is selected. <p><i>Numeric, 1 digit</i></p>	<p>Student Information > Program Participation > Title 1 > Instructional Services > Other Instructional Services</p> <p>Title1.title1Services</p>
Support Services - Health, Dental and Eye Care	<p>Indicates the student receives Title 1 Services for Health, Dental and Eye Care Services.</p> <ul style="list-style-type: none"> • Reports 0 when Health, Dental and Eye Care Services is not selected. • Reports 1 when Health, Dental and Eye Care Services is selected. <p><i>Numeric, 1 digit</i></p>	<p>Student Information > Program Participation > Title 1 > Support Services > Health, Dental and Eye Care Services</p> <p>Title1.supportServices</p>
Support Services - Guidance/Advocacy	<p>Indicates the student receives Title 1 Services for Guidance/Advocacy.</p> <ul style="list-style-type: none"> • Reports 0 when Supporting Guidance/Advocacy is not selected. • Reports 1 when Supporting Guidance/Advocacy is selected. <p><i>Numeric, 1 digit</i></p>	<p>Student Information > Program Participation > Title 1 > Guidance/Advocacy</p> <p>Title1.supportServices</p>
Support Services - Other Support Services	<p>Indicates the student receives Title 1 Services for Other Support Services.</p> <ul style="list-style-type: none"> • Reports 0 when Other Support Services is not selected. • Reports 1 when Other Support Services is selected. <p><i>Numeric, 1 digit</i></p>	<p>Student Information > Program Participation > Title 1 > Other Support Services</p> <p>Title1.supportServices</p>

Previous Versions

[Title 1 Extract \(Colorado\) \[.2148 - .2227\]](#)
