

Performance Measure Files (Idaho)

Last Modified on 10/22/2022 10:17 am CDT

[Report Logic](#) | [Generating the Extract](#) | [Extract Layout](#)

PATH: ID State Reporting > Performance Measure Files

The Idaho Performance Measure Files report individual student data and student counts for Carl Perkins Annual Report Submission.

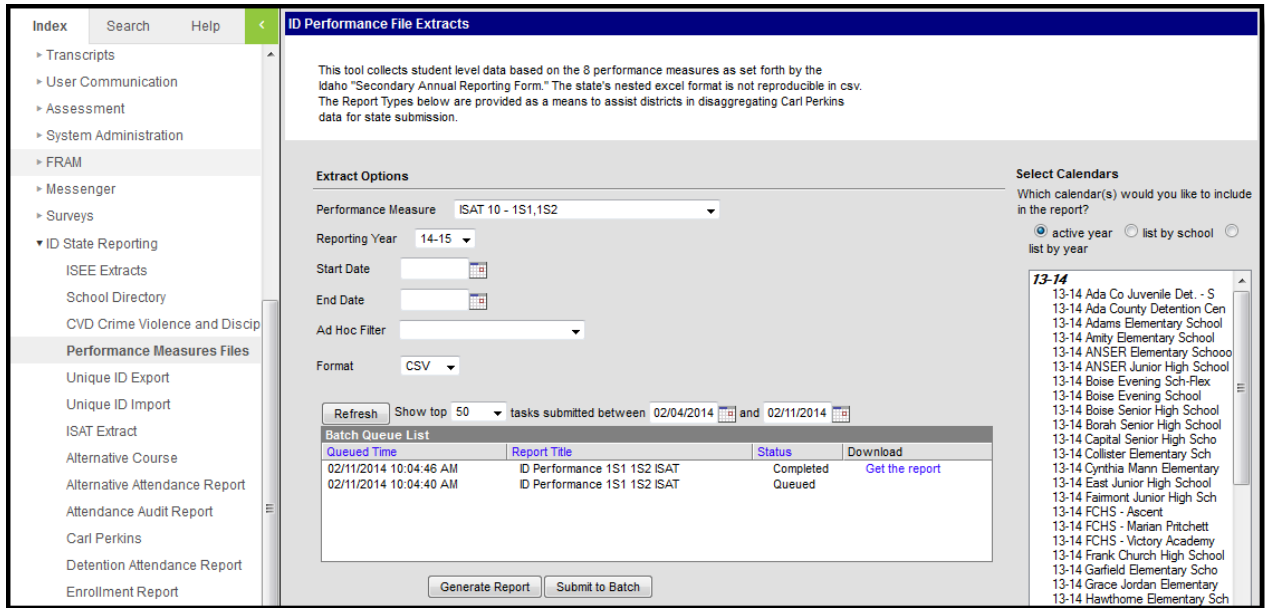


Image 1: Performance Measure Files Extract Editor

Report Logic

The same fields will report for each Performance Measure File in the [Counts Section](#) of the report, but the logic for which students are included in the calculations differs for each file type. The [Student Detail Section](#) reports different fields for each File. A record is reported for each calendar selected. The **Denominator** for each record is the total number of students in the group being measured. The **Numerator** is the total number of students who met or exceeded the standard. Denominators and Numerators are indicated by the **Measure** column.

ISAT 10 (1S1, 1S2)

Denominator: Students with active enrollments at any time between the Start and End Date of the calendar selected in the extract editor where the enrollment Grade Level is mapped to a State Grade Level of 12 and the Concentrator checkbox is marked on the CTE tab.

Numerator: Reading is indicated with **1S1** in the first column and Math with **1S2**.

- **Math A:** The student's best proficiency across all ISAT assessments where the State Code is ISAT, the Subject is Math and the Proficiency is A: Advanced.
- **Math P:** The student's best proficiency across all ISAT assessments where the State Code is

ISAT, the Subject is Math and the Proficiency is P: Proficient.

- **Math B:** The student's best proficiency across all ISAT assessments where the State Code is ISAT, the Subject is Math and the Proficiency is B: Basic.
- **Math BB:** The student's best proficiency across all ISAT assessments where the State Code is ISAT, the Subject is Math and the Proficiency is BB: Below Basic.
- **Reading A:** The student's best proficiency across all ISAT assessments where the State Code is ISAT, the Subject is Reading and the Proficiency is A: Advanced.
- **Reading P:** The student's best proficiency across all ISAT assessments where the State Code is ISAT, the Subject is Reading and the Proficiency is P: Proficient.
- **Reading B:** The student's best proficiency across all ISAT assessments where the State Code is ISAT, the Subject is Reading and the Proficiency is B: Basic.
- **Reading BB:** The student's best proficiency across all ISAT assessments where the State Code is ISAT, the Subject is Reading and the Proficiency is BB: Below Basic.

The **Student Detail Section** reports one record per calendar per 12th grade CTE Concentrator enrollment per assessment with a State Code of ISAT per Proficiency. An ISAT record will include a record for each Denominator and Numerator option listed below for each calendar.

Technical Skills Attainment (2S1 TSA)

The TSA is the completion exam assessed for a PTE Program.

Denominator: (TSA Taken) - Students enrolled in a grade level mapped to a State Grade of 11 or 12 who have a PTE record active during the extract Date Range that has Concentrator marked and have taken an assessment with a State Code of TSA.

Numerator: (TSA Passed) - Students who earned a Raw Score on the assessment with a State Code of TSA that is considered *passing*.

The **Student Detail Section** reports one record per student enrolled in a State Grade of 11 or 12 who has a PTE record active during the extract Date Range that has Concentrator marked and took an assessment with a State Code of TSA.

School Completion and Grad Rate (3S1, 4S1)

Denominator: (Concentrators Left HS) - Students enrolled in a grade level mapped to a State Grade of 11 or 12 who have a PTE record active during the Date Range where Concentrator is marked and the student has an Enrollment Exit Date.

Numerator: (Concentrators earned HS Diploma) - Students enrolled in a grade level mapped to a State Grade of 11 or 12 who have a PTE record active during the Date Range where Concentrator is marked, an Enrollment End Date is entered and the student's Diploma Type is 1 or 2.

The **Student Detail Section** reports one record per calendar per student enrollment per entered Exit Date that falls on or within the extract Date Range where the student is enrolled in a grade level mapped to 11 or 12 and has an active CTE record with Concentrator marked during the selected Calendar.

Secondary Placement (5S1)

Denominator: (Left HS Previous Year) - Students enrolled in a grade of 11 or 12 who have a prior year Exit Date and an Exit Status of 3A - 3D, 4A - 4E, 5C or 5D and are enrolled in a CTE program with Concentrator marked that is active during the prior year.

Numerator: (Positive Placement) - Students enrolled in a grade of 11 or 12 who have a prior year Exit Date and an Exit Status of 3A - 3D, 4A - 4E, 5C or 5D, are enrolled in a CTE program with Concentrator marked that is active during the prior year and have a Follow Up Status on the Graduation Tab of 2, 3, 4 or 5.

The **Student Detail Section** reports one record per Calendar per Enrollment per Exit Date for each student with a primary or partial enrollment that has an Exit Date during the prior year calendar of the calendar selected in the extract editor. The report first looks for PTE Course Number, then the Vocational or Capstone course flag, and a prior year enrollment in a State Grade of 11 or 12 of a student with a CTE record with Concentrator marked that is active during the prior year.

Non-Traditional Participation (6S1)

Denominator: (NonTrad Program Participants) - Students actively enrolled at any point during the selected calendar with a mapped State Grade of 09, 10, 11 or 12 with a CTE program that has Concentrator and/or Participant marked.

Numerator: (NonTrad to Gender) - Students enrolled in a mapped State Grade of 09, 10, 11 or 12 who have a CTE program that has Concentrator and/or Participant marked and a value chosen for Non Trad Program Gender.

The **Student Detail Section** reports one record for each primary and/or partial enrollment active during a selected Calendar with a mapped State Grade of 09, 10, 11 or 12 who have an active CTE program that has Concentrator and/or Participant marked and a value chosen for Non Trad Program Gender.

Non-Traditional Completion (6S2)

Denominator: (NonTrad Program Concentrators) - Students with an active enrollment during a selected calendar mapped to a State Grade of 11 or 12 with a CTE Program that has Concentrator marked.

Numerator: (NonTrad to Gender) - Students with an enrollment mapped to a State Grade of 11 or 12 with a CTE Program with Concentrator marked and a Non Trad Program Gender selected.

The **Student Detail Section** reports one record for each student's primary and/or partial enrollment during a selected Calendar mapped to a State Grade of 11 or 12 with a CTE Program active during the calendar that has Concentrator marked and a Non Trad Program Gender selected.

Generating the Extract

1. Select which **Performance Measure File** to generate. Options are:
 - ISAT 10 - 1S1, 1S2
 - Technical Skills Attainment - 2S1
 - School Completion and Grad Rate - 3S1, 4S1
 - Secondary Placement - 5S1
 - Non-Traditional Participation - 6S1
 - Non-Traditional Completion - 6S2
2. Enter a **Start Date** and **End Date** to limit records reported to those within the date range. These fields are required.
3. Select an **Ad Hoc Filter** to limit records to those included in the filter.
4. Select the **Format** in which the report should generate. Options are *CSV* and *HTML*.
5. Select the **Calendars** that should be included in the report.
6. Click **Generate Extract** to view the report in the selected format or **Submit to Batch** to schedule when the report will generate.

Users have the option of submitting a Performance Measures File report request to the batch queue by clicking **Submit to Batch** instead of Generate Extract. This process allows larger reports to generate in the background, without disrupting the use of Campus. For more information about submitting a report to the batch queue, see the [Batch Queue](#) article. A list of recent Batch Queue requests will appear in the extract editor in the Batch Queue List.

	A	B	C	D	E	F	G	H
1		CalendarName	CalendarID	SchoolName	EndYear	Measure	GrandTotal	#Female
2	1S1_1S2	11-12 A Campus Test School	604	A Campus Test School	2012	Demoninator	0	0
3	1S2	11-12 A Campus Test School	604	A Campus Test School	2012	Math (A) Numerator	0	0
4	1S2	11-12 A Campus Test School	604	A Campus Test School	2012	Math (P) Numerator	0	0
5	1S2	11-12 A Campus Test School	604	A Campus Test School	2012	Math (B)	0	0
6	1S2	11-12 A Campus Test School	604	A Campus Test School	2012	Math (BB)	0	0
7	1S1	11-12 A Campus Test School	604	A Campus Test School	2012	Reading (A) Numerator	0	0

Image 2: Performance Measure Files (ISAT) - CSV Format

2S1_TechnicalSkillsAttainment Count Totals Records:10								
	CalendarName	CalendarID	SchoolName	EndYear	Measure	GrandTotal	#Female	#Male
2S1	11-12 A Campus Test School	604	A Campus Test School	2012	TSA_Taken	0	0	0
2S1	11-12 A Campus Test School	604	A Campus Test School	2012	TSA_Passed	0	0	0
2S1	11-12 A Campus Test School	591	A Campus Test School	2012	TSA_Taken	0	0	0
2S1	11-12 A Campus Test School	591	A Campus Test School	2012	TSA_Passed	0	0	0

Image 3: Performance Measure Files (Technical Skills Attainment) - HTML Format

Extract Layout

Counts Section

Element Name	Description & Format	Campus Location
Calendar Name	The name of the calendar for a which a record is reported. <i>Alphanumeric, 30 characters</i>	System Administration > Calendar > Calendar Info > Name Calendar.name
Calendar ID	The identification number of the calendar for which a record is reported. <i>Numeric, 3 digits</i>	System Administration > Calendar > Calendar Info > Calendar ID Calendar.number
School Name	The name of the school for which a record is reported. <i>Alphanumeric, 40 characters</i>	System Administration > Resources > School > Name School.name
End Year	The end year of the Calendar's End Date. <i>Numeric, 4 digits, YYYY</i>	System Administration > Calendar > Calendar Info > End Date (year only) Calendar.endDate
Measure	Indicates whether the counts reported are for a Denominator or Numerator record. <i>Alphanumeric</i>	Not dynamically stored
Grand Total	The total number of all students who meet record population parameters. <i>Numeric</i>	Calculated
#Female	The number of female students who meet record population parameters. <i>Numeric</i>	Calculated from Census > People > Demographics > Gender Calculated, not dynamically stored
#Male	The number of male students who meet record population parameters. <i>Numeric</i>	Calculated from Census > People > Demographics > Gender Calculated, not dynamically stored

Element Name	Description & Format	Campus Location
#AmIndianAK	<p>The number of students identified as American Indian/Alaskan Native who meet record population parameters.</p> <p><i>Numeric</i></p>	<p>Calculated from Census > People > Demographics > Race/Ethnicity</p> <p>Calculated, not dynamically stored</p>
#Asian	<p>The number of students identified as Asian who meet record population parameters.</p> <p><i>Numeric</i></p>	<p>Calculated from Census > People > Demographics > Race/Ethnicity</p> <p>Calculated, not dynamically stored</p>
#BlackAA	<p>The number of students identified as Black/African American who meet record population parameters.</p> <p><i>Numeric</i></p>	<p>Calculated from Census > People > Demographics > Race/Ethnicity</p> <p>Calculated, not dynamically stored</p>
#HispanicL	<p>The number of students identified as Hispanic/Latino who meet record population parameters.</p> <p><i>Numeric</i></p>	<p>Calculated from Census > People > Demographics > Race/Ethnicity</p> <p>Calculated, not dynamically stored</p>
#NativeH Pacls	<p>The number of students identified as Native Hawaiian/Pacific Islander who meet record population parameters.</p> <p><i>Numeric</i></p>	<p>Calculated from Census > People > Demographics > Race/Ethnicity</p> <p>Calculated, not dynamically stored</p>
#White	<p>The number of students identified as White who meet record population parameters.</p> <p><i>Numeric</i></p>	<p>Calculated from Census > People > Demographics > Race/Ethnicity</p> <p>Calculated, not dynamically stored</p>
#Multi Race	<p>The number of students identified as American Indian/ Alaskan Native who meet record population parameters.</p> <p><i>Numeric</i></p>	<p>Calculated from Census > People > Demographics > Race/Ethnicity</p> <p>Calculated, not dynamically stored</p>

Element Name	Description & Format	Campus Location
#IEP or 504	The number of students who have an Individual Education Plan or who are eligible for 504 assistance who meet record population parameters. <i>Numeric</i>	Calculated from Student Information > General > Enrollments > State Reporting Fields > 504; Student Information > Special Ed > Documents > IEP Calculated, not dynamically stored
#Econ Disadvantaged	The number of students who are considered to be economically disadvantaged who meet record population parameters. <i>Numeric</i>	Calculated from FRAM > Eligibility > Eligibility Calculated, not dynamically stored
#Single Parent	The number of students designated as single parents who meet record population parameters. <i>Numeric</i>	Calculated from Student Information > General > Enrollments > State Reporting Fields > Single Parent Calculated, not dynamically stored
#LEP	The number of students indicated as Limited English Proficient who meet record population parameters. <i>Numeric</i>	Calculated from Student Information > Programs > LEP Calculated, not dynamically stored
#Migrant	The number of students who are considered to be migrant who meet record population parameters. <i>Numeric</i>	Calculated from Student Information > General > Enrollments > State Reporting Fields > Migrant Calculated, not dynamically stored
#Non Trad Student In Non Trad Program	The number of non-traditional students participating in a non-traditional program who meet record population parameters. <i>Numeric</i>	Calculated from Student Information > General > CTE > Non Traditional Program Calculated, not dynamically stored

Student Detail Section

Reports based on the Performance Measure file chosen in the extract editor.

- ISAT and Technical Skills Attainment (1S1, 1S2, and 2S1)
- School Completion and Grad Rate (3S1, 4S1)
- Secondary Placement (5S1)
- Non-Traditional Participation and Non-Traditional Completion (6S1,6S2)

ISAT and Technical Skills Attainment (1S1, 1S2 and 2S1)

These files are very similar, only differing in the test taken and the Test Result field.

Element Name	Description & Format	Campus Location
Calendar Name	The name of the calendar in which the student is enrolled. <i>Alphanumeric, 30 characters</i>	System Administration > Calendar > Calendar Info > Name Calendar.name
Calendar ID	The identification number of the calendar in which the student is enrolled. <i>Numeric, 3 digits</i>	System Administration > Calendar > Calendar Info > Number Calendar.number
School Name	The name of the school in which the student is enrolled. <i>Alphanumeric, 40 characters</i>	System Administration > Resources > School > Name School.name
End Year	The end year of the Calendar End Date. <i>Numeric, 4 digits, YYYY</i>	System Administration > Calendar > Calendar Info > End Date (year only) Calendar.endDate
# Enrollments	The number of active enrollments that student has in any calendar(s) selected in the extract editor. <i>Numeric, 2 digits</i>	Student Information > General > Enrollments Not dynamically stored
Student Number	The student's local identification number. <i>Numeric, 15 digits</i>	Census > People > Demographics > Person Identifiers > Local Student Number Person.studentNumber
SSID	The student's State ID. <i>Numeric, 9 digits</i>	Census > People > Demographics > Person Identifiers > Student State ID Person.stateID

Element Name	Description & Format	Campus Location
Last Name	The last name of the student. <i>Alphanumeric, 25 characters</i>	Census > People > Demographics > Last Name Identity.lastName
First Name	The first name of the student. <i>Alphanumeric, 20 characters</i>	Census > People > Demographics > First Name Identity.firstName
Middle Name	The middle name of the student. <i>Alphanumeric, 20 characters</i>	Census > People > Demographics > Middle Name Identity.middleName
Grade	The grade level of the student's enrollment. <i>Alphanumeric, 2 characters</i>	Student Information > General > Enrollments > Grade Enrollment.grade
CTE School	Indicates the school where the student receives CTE instruction. <i>Alphanumeric, 40 characters</i>	Student Information > General > CTE > School School.name
Program	Indicates the CTE program in which the student is participating. <i>Alphanumeric, 2 characters</i>	Student Information > General > CTE > Program CTE.program
PTE Type	The student's type of participation in the CTE Program. If the CTE dates fall within the extract date range and the student is marked as a Concentrator, reports as Concentrator . If the CTE dates fall within the extract date range and the student is marked as a Participant, reports as Participant . If the CTE dates fall within the extract date range and the student is marked as both Concentrator and Participant, reports as Both . <i>Alphanumeric, 12 characters</i>	Student Information > General > CTE > Participant and Concentrator CTE.participant CTE.concentrator

Element Name	Description & Format	Campus Location
Lead Instructor	<p>Reports the Lead Instructor for the student's CTE Program. If that field is blank, reports the primary teacher of the most recent course of the student that has Vocational or Vocational Capstone Course marked.</p> <p><i>Alphanumeric, 50 characters</i></p>	<p>Student Information General > CTE > Lead Instructor</p> <p>CTE.leadInstructor</p>
Assessment State Code	<p>Reports the state code for an assessment taken by the student with a state code of ISAT.</p> <p><i>Alphanumeric, 4 characters</i></p>	<p>Assessment > Test Setup > Tests > Test Detail > State Code</p> <p>Test.stateCode</p>
Assessment Name	<p>Reports the name of the assessment taken by the student with a state code of ISAT.</p> <p><i>Alphanumeric</i></p>	<p>Assessment > Test Setup > Tests > Test Detail > Name</p> <p>Test.name</p>
ISAT Subject (ISAT)	<p>Reports the ISAT Subject of the assessment the student completed, Reading, Math, Science or Language.</p> <p><i>Alphanumeric, 1 character</i></p>	<p>Assessment > Test Setup > Tests > Test Detail > Subject</p> <p>Test.type</p>
Score	<p>The score the student received on the assessment.</p> <p><i>Numeric</i></p>	<p>Student Information > General > Assessment > Test Score > Score</p> <p>TestScore.rawScore</p>
Test Date	<p>The date the student took the assessment.</p> <p><i>Date field, 10 characters, MM/DD/YYYY</i></p>	<p>Student Information > General > Assessment > Test Scores > Date</p> <p>TestScore.date</p>
Proficiency (ISAT)	<p>The level of proficiency the student achieved on the ISAT assessment. Options are:</p> <ul style="list-style-type: none"> • BB: Below Basic • B: Basic • P: Proficient • A: Advanced <p><i>Alphanumeric, 1 character</i></p>	<p>Student Information > General > Assessment > Test Scores > Proficiency</p> <p>TestScore.proficiency</p>

Element Name	Description & Format	Campus Location
Test Result (TSA)	Indication of whether the student passed or failed the assessment <i>Alphanumeric, 4 characters</i>	Assessment > Test Setup > Tests > Test Detail > Score ScoreListItem. passingScore
Non-Trad Program Gender	Reports the value selected in the Non-Traditional Program dropdown list. Options are blank, F: Female or M: Male. <i>Alphanumeric, 1 character</i>	Student Information > General > CTE > Non-Traditional Program CTE.nonTraditional
Student Gender	Reports the gender of the student, F: Female or M: Male. <i>Alphanumeric, 1 character</i>	Census > People > Demographics > Gender Identity.gender
Race Ethnicity	Reports the race/ethnicity of the student. <i>Numeric, 2 digits</i>	Census > People > Demographics > Race/Ethnicity Identity.raceEthnicity
IEP or 504	Indicates if the student participates in a 504 program or has a locked, active IEP. Reports as Y or N. <i>Alphanumeric, 1 character</i>	Student Information > General > Enrollments > State Reporting Fields > Section 504; Student Information > Special Ed > Documents > IEP Enrollment.section504
Econ Disadvantaged	Indicates if the student is considered to be economically disadvantaged. Reports the State Eligibility Code <i>Alphanumeric, 1 character</i>	FRAM > Eligibility > Eligibility POSEligibility.Eligibility
Single Parent	Indicates if the student is a single parent. Reports as Y or N. <i>Alphanumeric, 1 character</i>	Student Information > General > Enrollments > State Reporting Fields > Single Parent Enrollment.singleParent

Element Name	Description & Format	Campus Location
LEP	<p>Indicates if the student is considered to be Limited English Proficient and is participating in an LEP program.</p> <p>See the following LEP Options table for values.</p> <p><i>Alphanumeric, 2 characters</i></p>	<p>Student Information > General > LEP</p> <p>Calculated, not dynamically stored</p>
Migrant	<p>Indicates if the student is considered to be a migrant. Reports as Y or N.</p> <p><i>Alphanumeric, 1 character</i></p>	<p>Student Information > General > Enrollments > State Reporting Fields > Migrant</p> <p>Enrollment.migrant</p>

School Completion and Grad Rate (3S1, 4S1)

Element Name	Description & Format	Campus Location
Calendar Name	<p>The name of the calendar in which the student is enrolled.</p> <p><i>Alphanumeric, 30 characters</i></p>	<p>System Administration > Calendar > Calendar Info > Name</p> <p>Calendar.name</p>
Calendar ID	<p>The identification number of the calendar in which the student is enrolled.</p> <p><i>Numeric, 3 digits</i></p>	<p>System Administration > Calendar > Calendar Info > Number</p> <p>Calendar.number</p>
School Name	<p>The name of the school in which the student is enrolled.</p> <p><i>Alphanumeric, 40 characters</i></p>	<p>System Administration > Resources > School > Name</p> <p>School.name</p>
End Year	<p>The end year of the Calendar End Date.</p> <p><i>Numeric, 4 digits, YYYY</i></p>	<p>System Administration > Calendar > Calendar Info > End Date (year only)</p> <p>Calendar.endDate</p>
# Enrollments	<p>The number of active enrollments that student has in any calendar(s) selected in the extract editor.</p> <p><i>Numeric, 2 digits</i></p>	<p>Student Information > General > Enrollments</p> <p>Not dynamically stored</p>

Element Name	Description & Format	Campus Location
Student Number	The student's local identification number. <i>Numeric, 15 digits</i>	Census > People > Demographics > Person Identifiers > Local Student Number Person.studentNumber
SSID	The student's State ID. <i>Numeric, 9 digits</i>	Census > People > Demographics > Person Identifiers > Student State ID Person.stateID
Last Name	The last name of the student. <i>Alphanumeric, 25 characters</i>	Census > People > Demographics > Last Name Identity.lastName
First Name	The first name of the student. <i>Alphanumeric, 20 characters</i>	Census > People > Demographics > First Name Identity.firstName
Middle Name	The middle name of the student. <i>Alphanumeric, 20 characters</i>	Census > People > Demographics > Middle Name Identity.middleName
Grade	The grade level of the student's enrollment. <i>Alphanumeric, 2 characters</i>	Student Information > General > Enrollments > Grade Enrollment.grade
CTE School	Indicates the school where the student receives CTE instruction. <i>Alphanumeric, 40 characters</i>	Student Information > General > CTE > School School.name
Program	Indicates the CTE program in which the student is participating. <i>Alphanumeric, 2 characters</i>	Student Information > General > CTE > Program CTE.program

Element Name	Description & Format	Campus Location
PTE Type	<p>The student's type of participation in the CTE Program..</p> <p>If the CTE dates fall within the extract date range and the student is marked as a Concentrator, reports as Concentrator.</p> <p>If the CTE dates fall within the extract date range and the student is marked as a Participant, reports as Participant.</p> <p>If the CTE dates fall within the extract date range and the student is marked as both Concentrator and Participant, reports as Both.</p> <p><i>Alphanumeric, 12 characters</i></p>	<p>Student Information > General > CTE > Participant and Concentrator</p> <p>CTE.participant CTE.concentrator</p>
Lead Instructor	<p>Reports the Lead Instructor for the student's CTE Program. If that field is blank, reports the primary teacher of the most recent course of the student that has Vocational or Vocational Capstone Course marked.</p> <p><i>Alphanumeric, 50 characters</i></p>	<p>Student Information > General > CTE > Lead Instructor</p> <p>CTE.leadInstructor</p>
Enrollment End Date	<p>The End Date of the student's enrollment.</p> <p><i>Date field, 10 characters, MM/DD/YYYY</i></p>	<p>Student Information > General > Enrollments > End Date</p> <p>Enrollment.endDate</p>
Enrollment End Status	<p>The End Status of the student's enrollment.</p> <p><i>Alphanumeric, 2 characters</i></p>	<p>Student Information > General > Enrollments > Leaver Code</p> <p>Enrollment.endStatus</p>
Diploma Date	<p>The date on which the student graduated.</p> <p><i>Date field, 10 characters, MM/DD/YYYY</i></p>	<p>Student Information > General > Graduation > Diploma Date</p> <p>Graduation.diplomaDate</p>

Element Name	Description & Format	Campus Location
Diploma Type	The type of diploma the student recieved upon graduation. <i>Numeric, 1 digit</i>	Student Information > General > Graduation > Diploma Type Graduation.diplomaType
5+ Year Completer	Indicates if the student required more than 5 years to graduate. <i>Alphanumeric, Y or N</i>	Student Information > General > Graduation > 5 or more year completer Graduation.5YearCompleter
Non-Trad Program Gender	Reports the value selected in the Non-Traditional Program dropdown list. Options are blank, F: Female or M: Male. <i>Alphanumeric, 1 character</i>	Student Information > General > CTE > Non-Traditional Program CTE.nonTraditional
Student Gender	Reports the gender of the student, F: Female or M: Male. <i>Alphanumeric, 1 character</i>	Census > People > Demographics > Gender Identity.gender
Race Ethnicity	Reports the race/ethnicity of the student. <i>Numeric, 2 digits</i>	Census > People > Demographics > Race/Ethnicity Identity.raceEthnicity
IEP or 504	Indicates if the student participates in a 504 program or has a locked, active IEP. Reports as Y or N. <i>Alphanumeric, 1 character</i>	Student Information > General > Enrollments > State Reporting Fields > Section 504; Student Information > Special Ed > Documents > IEP Enrollment.section504
Econ Disadvantaged	Indicates if the student is considered to be economically disadvantaged. Reports the State Eligibility Code <i>Alphanumeric, 1 character</i>	FRAM > Eligibility > Eligibility POSEligibility.Eligibility
Single Parent	Indicates if the student is a single parent. Reports as Y or N. <i>Alphanumeric, 1 character</i>	Student Information > General > Enrollments > State Reporting Fields > Single Parent Enrollment.singleParent

Element Name	Description & Format	Campus Location
LEP	<p>Indicates if the student is considered to be Limited English Proficient and is participating in an LEP program.</p> <p>See the following LEP Options table for values.</p> <p><i>Alphanumeric, 2 characters</i></p>	<p>Student Information > General > LEP</p> <p>Calculated, not dynamically stored</p>
Migrant	<p>Indicates if the student is considered to be a migrant. Reports as Y or N.</p> <p><i>Alphanumeric, 1 character</i></p>	<p>Student Information > General > Enrollments > State Reporting Fields > Migrant</p> <p>Enrollment.migrant</p>

Secondary Placement (5S1)

The fields in the file that report prior year information will only report if the CTE record date range or enrollment being reported fell within the prior year Calendar of the Calendar selected in the extract editor.

Element Name	Description & Format	Campus Location
Calendar Name	<p>The name of the calendar in which the student is enrolled.</p> <p><i>Alphanumeric, 30 characters</i></p>	<p>System Administration > Calendar > Calendar Info > Name</p> <p>Calendar.name</p>
Calendar ID	<p>The identification number of the calendar in which the student is enrolled.</p> <p><i>Numeric, 3 digits</i></p>	<p>System Administration > Calendar > Calendar Info > Number</p> <p>Calendar.number</p>
School Name	<p>The name of the school in which the student is enrolled.</p> <p><i>Alphanumeric, 40 characters</i></p>	<p>System Administration > Resources > School > Name</p> <p>School.name</p>
End Year	<p>The end year of the Calendar End Date.</p> <p><i>Numeric, 4 digits, YYYY</i></p>	<p>System Administration > Calendar > Calendar Info > End Date (year only)</p> <p>Calendar.endDate</p>

Element Name	Description & Format	Campus Location
# Enrollments	The number of active enrollments that student has in any calendar(s) selected in the extract editor. <i>Numeric, 2 digits</i>	Student Information > General > Enrollments Not dynamically stored
Student Number	The student's local identification number. <i>Numeric, 15 digits</i>	Census > People > Demographics > Person Identifiers > Local Student Number Person.studentNumber
SSID	The student's State ID. <i>Numeric, 9 digits</i>	Census > People > Demographics > Person Identifiers > Student State ID Person.stateID
Last Name	The last name of the student. <i>Alphanumeric, 25 characters</i>	Census > People > Demographics > Last Name Identity.lastName
First Name	The first name of the student. <i>Alphanumeric, 20 characters</i>	Census > People > Demographics > First Name Identity.firstName
Middle Name	The middle name of the student. <i>Alphanumeric, 20 characters</i>	Census > People > Demographics > Middle Name Identity.middleName
Prior Year Grade	The mapped State Grade level of the student's enrollment in the prior year of the same School and Calendar selected. <i>Alphanumeric, 2 characters</i>	Student Information > General > Enrollments > Grade Enrollment.grade
Prior Year CTE School	The school where the student receives CTE instruction in the prior year. <i>Alphanumeric, 40 characters</i>	Student Information > General > CTE > School School.name

Element Name	Description & Format	Campus Location
Prior Year Program	<p>The name and code of the CTE program in which the student participated in the prior year.</p> <p><i>Alphanumeric, 2 characters</i></p>	<p>Student Information > General > CTE > Program</p> <p>CTE.program</p>
Prior Year PTE Type	<p>The student's type of participation in the previous year's CTE Program.</p> <p>If the CTE dates fall within the extract date range and the student is marked as a Concentrator, reports as Concentrator.</p> <p>If the CTE dates fall within the extract date range and the student is marked as a Participant, reports as Participant.</p> <p>If the CTE dates fall within the extract date range and the student is marked as both Concentrator and Participant, reports as Both.</p> <p><i>Alphanumeric, 12 characters</i></p>	<p>Student Information > General > CTE > Participant and Concentrator</p> <p>CTE.participant CTE.concentrator</p>
Prior Year Lead Instructor	<p>The Lead Instructor of the student's CTE Program from the prior year. If that field is blank, reports the primary teacher of the most recent course of the student that has Vocational or Vocational Capstone Course marked.</p> <p><i>Alphanumeric, 50 characters</i></p>	<p>Student Information > General > CTE > Lead Instructor</p> <p>CTE.leadInstructor</p>
Prior Year Enrollment Exit Date	<p>The end date of the student's last enrollment in the prior year.</p> <p><i>Date field, 10 characters, MM/DD/YYYY</i></p>	<p>Student Information > General > Enrollments > End Date</p> <p>Enrollment.endDate</p>
Prior Year Enrollment Exit Status	<p>The end status of the student's last enrollment in the prior year.</p> <p><i>Alphanumeric, 2 characters</i></p>	<p>Student Information > General > Enrollments > Leaver Code</p> <p>Enrollment.endStatus</p>

Element Name	Description & Format	Campus Location
Diploma Type	The type of diploma the student received upon graduation. <i>Numeric, 1 digit</i>	Student Information > General > Graduation > Diploma Type Graduation.diplomaType
Diploma Date	The date on which the student graduated. <i>Date field, 10 characters, MM/DD/YYYY</i>	Student Information > General > Graduation > Diploma Date Graduation.diplomaDate
Follow Up Status	The student's graduation Follow-Up Status. <i>Numeric, 1 digit</i>	Student Information > General > Graduation > Follow-Up Status Graduation.followUpStatus
Prior Year Non Trad Program Gender	The gender of the student as recorded in the non-traditional program. <i>Alphanumeric, 1 character</i>	Student Information > General > CTE > Non-Traditional Program CTE.nonTraditional
Gender	Reports the gender of the student, F: Female or M: Male. <i>Alphanumeric, 1 character</i>	Census > People > Demographics > Gender Identity.gender
Race Ethnicity	Reports the race/ethnicity of the student. <i>Numeric, 2 digits</i>	Census > People > Demographics > Race/Ethnicity Identity.raceEthnicity
Prior Year IEP or 504	Indicates if the student had an active, locked IEP or participated in a 504 plan in the prior year. <i>Alphanumeric, Y or N</i>	Student Information > General > Enrollments > State Reporting Fields > Section 504; Student Information > Special Ed > Documents > IEP Enrollment.section504
Prior Year Econ Disadvantaged	Indicates if the student was considered to be economically disadvantaged in the prior year. Reports the State Eligibility Code. <i>Alphanumeric, 1 character</i>	FRAM > Eligibility > Eligibility POSEligibility.eligibility

Element Name	Description & Format	Campus Location
Prior Year Single Parent	Indicates if the student a single parent in the prior year. <i>Alphanumeric, Y or N</i>	Student Information > General > Enrollments > State Reporting Fields > Single Parent Enrollment.singleParent
Prior Year LEP	Indicates if the student was considered to be Limited English Proficient and participated in an LEP program in the prior year. See the following LEP Options table for values. <i>Alphanumeric, 2 characters</i>	Calculated, not dynamically stored
Prior Year Migrant	Indicates if the student was considered to be a migrant in the prior year. <i>Alphanumeric, Y or N</i>	Student Information > General > Enrollments > State Reporting Fields > Migrant Enrollment.migrant

Non-Traditional Participation and Non-Traditional Completion (6S1, 6S2)

Element Name	Description & Format	Campus Location
Calendar Name	The name of the calendar in which the student is enrolled. <i>Alphanumeric, 30 characters</i>	System Administration > Calendar > Calendar Info > Name Calendar.name
Calendar ID	The identification number of the calendar in which the student is enrolled. <i>Numeric, 3 digits</i>	System Administration > Calendar > Calendar Info > Number Calendar.number
School Name	The name of the school in which the student is enrolled. <i>Alphanumeric, 40 characters</i>	System Administration > Resources > School > Name School.name
End Year	The end year of the Calendar End Date. <i>Numeric, 4 digits, YYYY</i>	System Administration > Calendar > Calendar Info > End Date (year only) Calendar.endDate

Element Name	Description & Format	Campus Location
# Enrollments	The number of active enrollments that student has in any calendar(s) selected in the extract editor. <i>Numeric, 2 digits</i>	Student Information > General > Enrollments Not dynamically stored
Student Number	The student's local identification number. <i>Numeric, 15 digits</i>	Census > People > Demographics > Person Identifiers > Local Student Number Person.studentNumber
SSID	The student's State ID. <i>Numeric, 9 digits</i>	Census > People > Demographics > Person Identifiers > Student State ID Person.stateID
Last Name	The last name of the student. <i>Alphanumeric, 25 characters</i>	Census > People > Demographics > Last Name Identity.lastName
First Name	The first name of the student. <i>Alphanumeric, 20 characters</i>	Census > People > Demographics > First Name Identity.firstName
Middle Name	The middle name of the student. <i>Alphanumeric, 20 characters</i>	Census > People > Demographics > Middle Name Identity.middleName
Grade	The grade level of the student's enrollment. <i>Alphanumeric, 2 characters</i>	Student Information > General > Enrollments > Grade Enrollment.grade
CTE School	Indicates the school where the student receives CTE instruction. <i>Alphanumeric, 40 characters</i>	Student Information > General > CTE > School School.name
Program	Indicates the CTE program in which the student is participating. <i>Alphanumeric, 2 characters</i>	Student Information > General > CTE > Program CTE.program

Element Name	Description & Format	Campus Location
Completion Date (Completion record only)	<p>The date on which the student completed the the CTE program.</p> <p><i>Date field, 10 characters, MM/DD/YYYY</i></p>	<p>Student Information > General > CTE > Completion Date</p> <p>CTE.completionDate</p>
PTE Type	<p>The student's type of participation in the CTE Program..</p> <p>If the CTE dates fall within the extract date range and the student is marked as a Concentrator, reports as Concentrator.</p> <p>If the CTE dates fall within the extract date range and the student is marked as a Participant, reports as Participant.</p> <p>If the CTE dates fall within the extract date range and the student is marked as both Concentrator and Participant, reports as Both.</p> <p><i>Alphanumeric, 12 characters</i></p>	<p>Student Information > General > CTE > Participant and Concentrator</p> <p>CTE.participant CTE.concentrator</p>
Lead Instructor	<p>Reports the Lead Instructor for the student's CTE Program. If that field is blank, reports the primary teacher of the most recent course of the student that has Vocational or Vocational Capstone Course marked.</p> <p><i>Alphanumeric, 50 characters</i></p>	<p>Student Information > General > CTE > Lead Instructor</p> <p>CTE.leadInstructor</p>
Non-Trad Program Gender	<p>Reports the value selected in the Non-Traditional Program dropdown list. Options are blank, F: Female or M: Male.</p> <p><i>Alphanumeric, 1 character</i></p>	<p>Student Information > General > CTE > Non-Traditional Program</p> <p>CTE.nonTraditional</p>
Student Gender	<p>Reports the gender of the student, F: Female or M: Male.</p> <p><i>Alphanumeric, 1 character</i></p>	<p>Census > People > Demographics > Gender</p> <p>Identity.gender</p>

Element Name	Description & Format	Campus Location
Race Ethnicity	<p>Reports the race/ethnicity of the student.</p> <p><i>Numeric, 2 digits</i></p>	<p>Census > People > Demographics > Race/Ethnicity</p> <p>Identity.raceEthnicity</p>
IEP or 504	<p>Indicates if the student participates in a 504 program or has a locked, active IEP. Reports as Y or N.</p> <p><i>Alphanumeric, 1 character</i></p>	<p>Student Information > General > Enrollments > State Reporting Fields > Section 504; Student Information > Special Ed > Documents > IEP</p> <p>Enrollment.section504</p>
Econ Disadvantaged	<p>Indicates if the student is considered to be economically disadvantaged. Reports the State Eligibility Code</p> <p><i>Alphanumeric, 1 character</i></p>	<p>FRAM > Eligibility > Eligibility</p> <p>POSEligibility.Eligibility</p>
Single Parent	<p>Indicates if the student is a single parent. Reports as Y or N.</p> <p><i>Alphanumeric, 1 character</i></p>	<p>Student Information > General > Enrollments > State Reporting Fields > Single Parent</p> <p>Enrollment.singleParent</p>
LEP	<p>Indicates if the student is considered to be Limited English Proficient and is participating in an LEP program.</p> <p>See the following LEP Options table for values.</p> <p><i>Alphanumeric, 2 characters</i></p>	<p>Student Information > General > LEP</p> <p>Calculated, not dynamically stored</p>
Migrant	<p>Indicates if the student is considered to be a migrant. Reports as Y or N.</p> <p><i>Alphanumeric, 1 character</i></p>	<p>Student Information > General > Enrollments > State Reporting Fields > Migrant</p> <p>Enrollment.migrant</p>

LEP Options

Code	Description	Logic
EW	Waived ELL	Reports if an active LEP record with a Program Status of LEP has the Parent Declined checkbox marked OR all LEP Services active during the extract Date Range have Parent Refused Services marked and all Date Refused dates are before the extract End Date.

Code	Description	Logic
FL	Former LEP Student - Now Fluent	Reports if the most recent LEP record has a Program Status of Exited LEP and the extract End date is after the Second Year Monitoring date.
L1	LEP1 - In the first year of U.S. school	Reports if Program Status is LEP and Identified Date and First Entered US School are 1 year or less from the extract End Date.
LE	LEP - Limited English Proficient	Reports if Program Status is LEP, the most recent LEP record is active at some point during the extract Date Range and Identified Date is more than a year from the extract End Date. Also reports if Identified Date is 1 year or less from the extract Start Date and Date Entered US Schools is blank.
LE	Exited LEP	Reports if the most recent LEP record has a Program Status of Exited LEP and the extract End Date falls before the Exited LEP Date and on or after the Identified Date.
N	Not LEP	Reports if the student does not have an LEP record or the most recent/active LEP record has a Program Status of Not LEP or Pending.
X1	LEPX1 - Exited first year	Reports if most recent LEP record has a Program Status of Exited LEP and First Year Monitoring contains a date on or between the Program Exit Date and the extract End Date.
X2	LEPX2 - Exited second year	Reports if most recent LEP record has a Program Status of Exited LEP and the extract End Date is after First Year Monitoring but on or before the Second Year Monitoring date.