

# English Learners (EL) (Kansas)

Last Modified on 10/22/2022 10:20 am CDT

[EL](#) | [EL Services](#)

**Classic View:** [Student Information](#) > [Program Participation](#) > [English Learners \(EL\)](#)

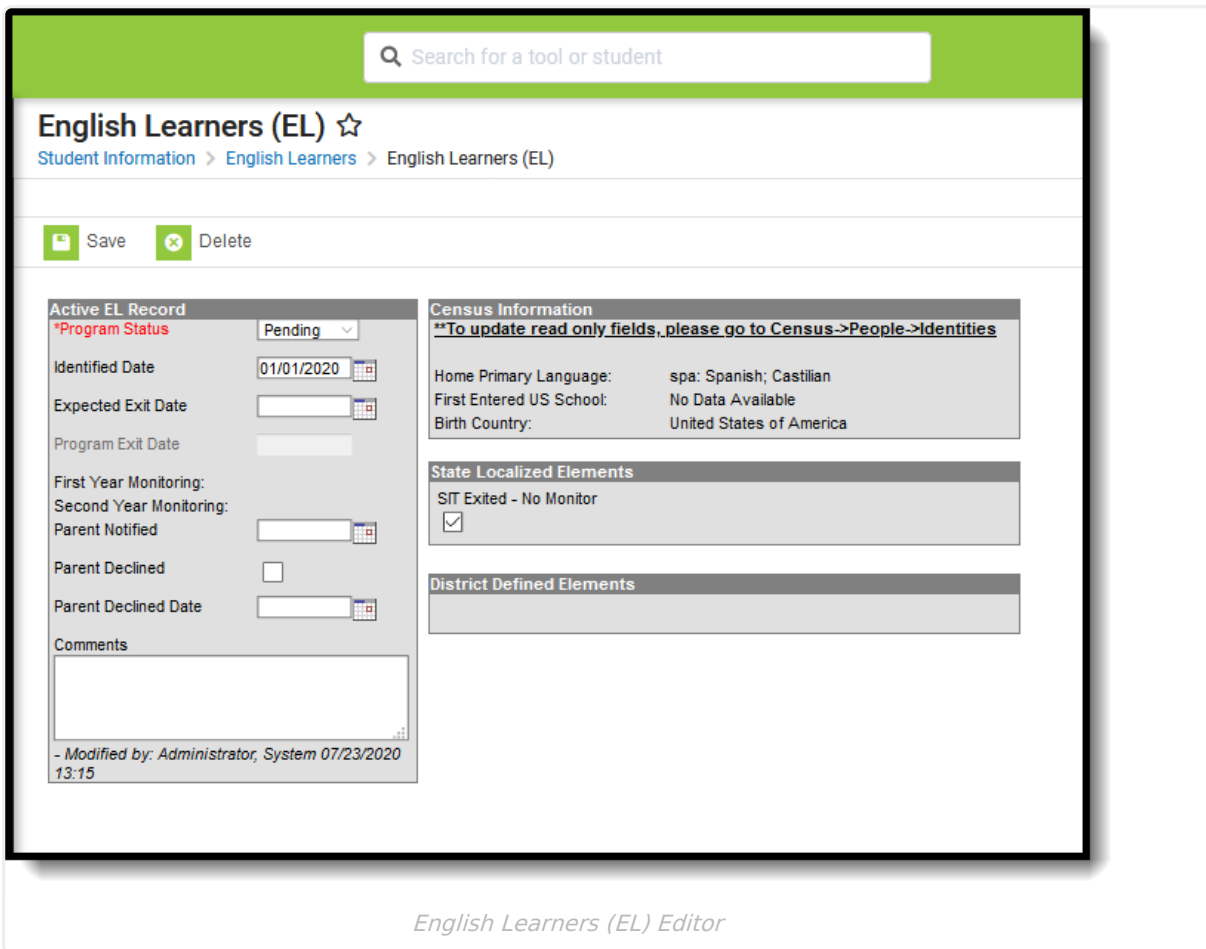
**Search Terms:** [English Learners](#)

The English Learners (EL) tools allow schools and districts to manage student EL programs, assessments, services, and accommodations. The EL tab provides a central location for managing EL information such as the date the student was identified as EL, when the student entered/exited an EL program, when the student is expected to leave an EL program and First Year/Second Year Monitoring data. For students who exited and/or re-entered an EL program, an historical record is kept and displayed on the tab which can be viewed in both State and District Editions of Infinite Campus.

Some fields in the EL tab are specific to your state. All other fields in the EL tab do not require unique, state-specific data. However, many of these fields are required and data entry in these fields is necessary. For more information on these fields, see the [English Learners \(EL\)](#) article.

## EL

English Learners tools allow schools and districts to manage student English Learners (EL) programs, assessments, services, and accommodations. EL tools were designed as a way to provide a single area for managing EL information and pulling data for state and federal reports. Some fields in the EL tab are specific to your state. All other fields in the EL tab do not require unique, state-specific data. However, many of these fields are required and data entry in these fields is necessary. For more information on these fields, see the [English Learners \(EL\)](#) article.



English Learners (EL) Editor

## Program Status

Program Status codes indicate the student's EL status. These codes are not specific to Kansas. Use the [Click here to expand](#) below for translation of this alignment.

English learner students are those students for whom there is a report of a primary language other than English on the state-approved Home Language Survey AND who, on the basis of the state approved oral language (grades kindergarten through grade twelve) assessment procedures and literacy (grades three through twelve only), have been determined to lack the clearly defined English language skills of listening comprehension, speaking, reading, and writing necessary to succeed in the school's regular instructional programs.

▶ [Click here to expand...](#)

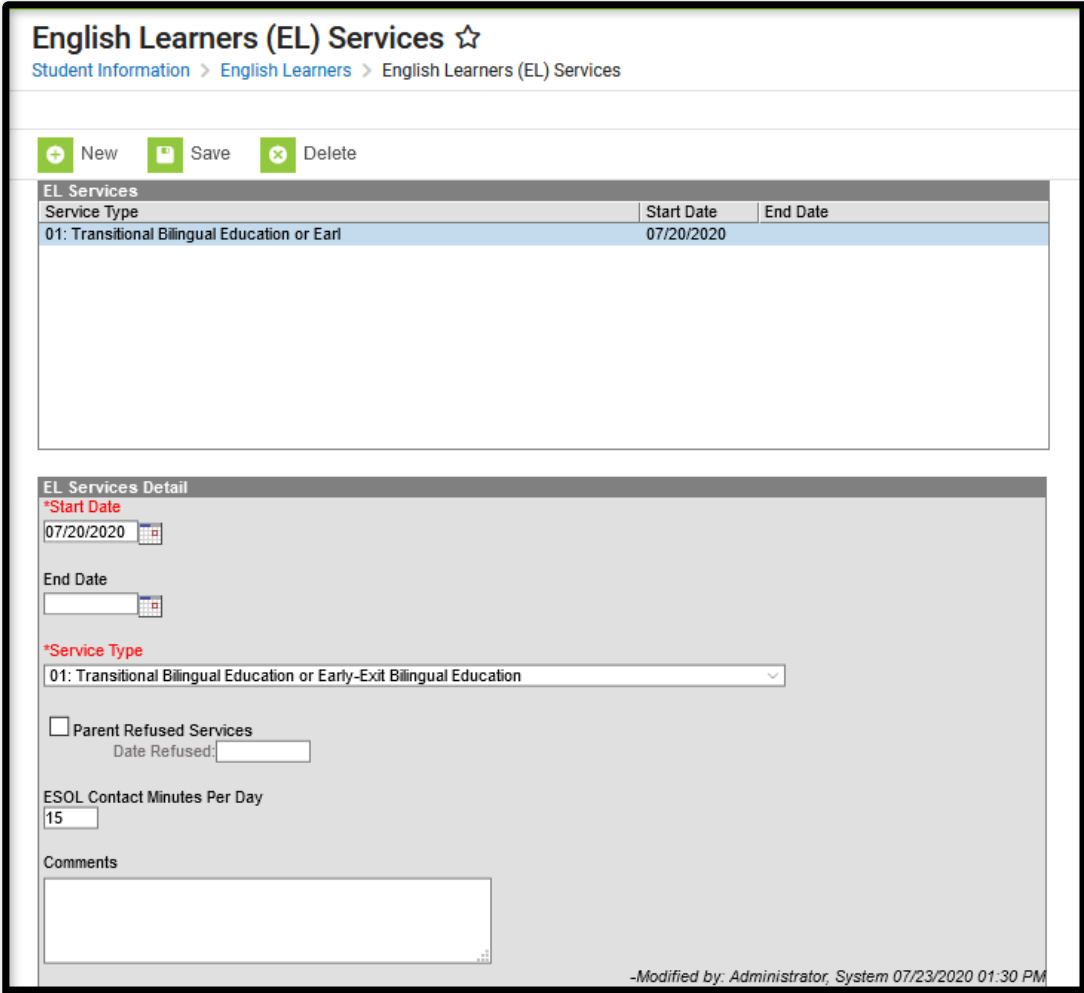
## SIT Exited - No Monitor

When marked, identifies students who have been exited from their LEP services due to the decision of the SIT team.

▶ [Click here to expand...](#)

# EL Services

The EL Services tool allows users to add, edit, delete, and view existing EL Services. Please see the [English Learners \(EL\)](#) article for more information. Fields that are specific to Kansas are described below. Users are able to enter specific service details in the EL Services Detail editor.



The screenshot displays the 'English Learners (EL) Services' interface. At the top, there are navigation links: 'Student Information > English Learners > English Learners (EL) Services'. Below this, there are three action buttons: 'New', 'Save', and 'Delete'. The main area is divided into two sections. The first section, 'EL Services', contains a table with the following data:

Service Type	Start Date	End Date
01: Transitional Bilingual Education or Earl	07/20/2020	

The second section, 'EL Services Detail', provides a form for editing a service. It includes the following fields and options:

- \*Start Date:** 07/20/2020 (with a calendar icon)
- End Date:** (empty field with a calendar icon)
- \*Service Type:** 01: Transitional Bilingual Education or Early-Exit Bilingual Education (dropdown menu)
- Parent Refused Services** (checkbox)
- Date Refused:** (empty field)
- ESOL Contact Minutes Per Day:** 15 (text input)
- Comments:** (empty text area)

At the bottom right of the detail section, it says: '-Modified by: Administrator, System 07/23/2020 01:30 PM'. Below the screenshot, the text 'EL Services' is centered.

## Service Type

ESL Service Type codes indicate whether the student is participating in a state-approved English as a Second Language (ESL) program.

▶ [Click here to expand...](#)

## ESOL Contact Minutes Per Day

Records the students ESOL minutes per day the student is provided services.

▶ [Click here to expand...](#)

