

DIRS Extract (Minnesota)

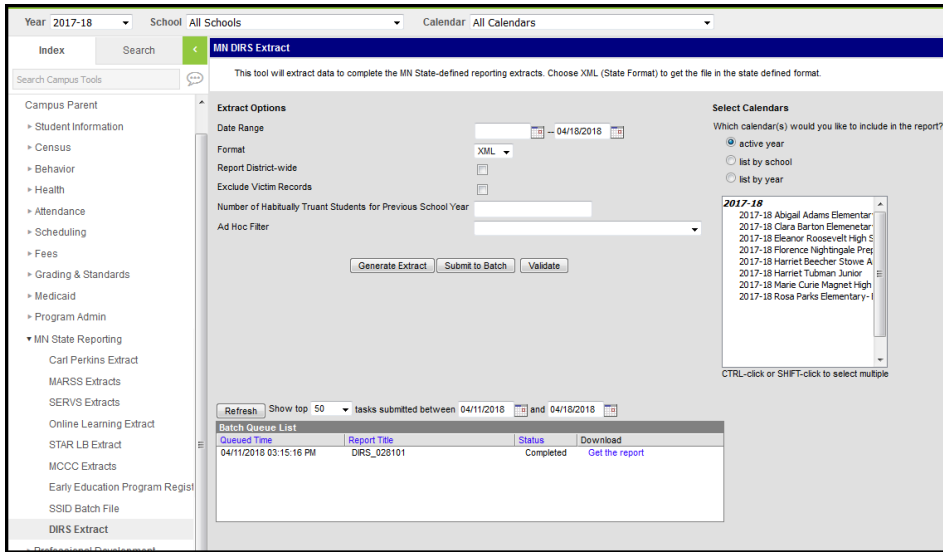
Last Modified on 10/22/2022 10:26 am CDT

[Report Logic](#) | [Generating the Extract](#) | [DIRS Extract Layout](#)

Classic View: MN State Reporting > DIRS Extract

Search Terms: DIRS Extract

The Disciplinary Incident Reporting System (DIRS) extract reports information about behavior data including suspensions, expulsions, and weapons.



The DIRS extract reports behavior data.

Report Logic

Incidents

The DIRS extract reports a record per behavior Incident that meet the following requirements:

- Has a valid State Event Code mapping.
- Has a resolution mapped to a State Code.
- Has at least one participant with a Role of Offender. The Offender must have a Primary enrollment active on the Date of Incident and must have at least one resolution record mapped to a valid State Code.
- Has a Relationship to School valued of 1 or 4 selected.
- Falls within the Date Range or calendar selected in the extract editor.

If multiple events exist for an incident, the event with the lowest event code reports, indicating the most severe. Victim records are reported if the event has a State Event Code of 3, 12, 25, 26, 27, 28, 29, 31, or 32, unless the Exclude Victim Records checkbox is marked on the extract editor.

Generating the Extract

1. Enter a **Date Range** to limit records to those with a Date of Incident on or within the range. The End Date defaults to the current date.
2. A **Format** of *XML* is selected by default.
3. Mark **Report District Wide** to generate the extract for all calendars in the current School Year.

4. Mark **Exclude Victim Records** to exclude participants with a Role of Victim from the extract if Victim records should not be included in the extract.
5. Enter a **Number of Habitually Truant Students from Previous School Year** to report that value in the extract. If a number is not entered in this field, a value of 000 reports and should be updated manually.
6. Select an **Ad hoc Filter** to limit records reports.
7. Select the **Calendar(s)** to be included in the report.
8. Click the **Generate Extract** button to generate the report in the indicated format or **Submit to Batch** to schedule when the report will generate.

Users have the option of submitting an extract request to the batch queue by clicking **Submit to Batch** instead of Generate Extract. This process will allow larger reports to generate in the background, without disrupting the use of Campus. For more information about submitting a report to the batch queue, see the [Batch Queue](#) article.

DIRS Extract Layout

Element Name	Description & Format	Campus Location
District Number	The identification number of the reporting district. <i>Numeric</i>	System Administration > Resources > Dist Information > State District Number District.number
District Type	The code that identifies the type of school district. <i>Numeric</i>	System Administration > Resources > Dist Information > Type District.type
School	Reports the total count of schools in the report.	
School Number	The number of the school where the incident occurred. <i>Numeric</i>	System Administration > Resources > Sch School Number School.number
Safety Specialist	The email address of the school safety specialist. <i>Alphanumeric</i>	System Administration > Resources > Sch Specialist Email School.otherEmail
Habitual Truants	The number of habitually truant students for previous school year entered in the extract editor, or 000 if blank. <i>Numeric</i>	MN State Reporting > DIRS Extract > Num Habitually Truant Students for Previous Sc Not dynamically stored
Safety Plan	Indicates if the school has a Safety Plan policy in place. If a policy record exists with a value of 01 that is active for the full extract Date Range, reports as true. Otherwise reports as false. <i>Alphanumeric</i>	System Administration > Resources > Sch Policy > Policy schoolPolicy.policy

Element Name	Description & Format	Campus Location
Anti-Violence Policy	<p>Indicates if the school has a Anti-Violence policy in place.</p> <p>If a policy record exists with a value of 03 that is active for the full extract Date Range, reports as true. Otherwise reports as false.</p> <p><i>Alphanumeric</i></p>	<p>System Administration > Resources > Sch Policy > Policy</p> <p>schoolPolicy.policy</p>
Drug Education	<p>Indicates if the school has a Drug Education policy in place.</p> <p>If a policy record exists with a value of 06 that is active for the full extract Date Range, reports as true. Otherwise reports as false.</p> <p><i>Alphanumeric</i></p>	<p>System Administration > Resources > Sch Policy > Policy</p> <p>schoolPolicy.policy</p>
Zero Tolerance Policy	<p>Indicates if the school has a Zero Tolerance policy in place.</p> <p>If a policy record exists with a value of 02 that is active for the full extract Date Range, reports as true. Otherwise reports as false.</p> <p><i>Alphanumeric</i></p>	<p>System Administration > Resources > Sch Policy > Policy</p> <p>schoolPolicy.policy</p>
Anti-Bullying Policy	<p>Indicates if the school has a Anti-Bullying policy in place.</p> <p>If a policy record exists with a value of 04 that is active for the full extract Date Range, reports as true. Otherwise reports as false.</p> <p><i>Alphanumeric</i></p>	<p>System Administration > Resources > Sch Policy > Policy</p> <p>schoolPolicy.policy</p>
Crisis Plan	<p>Indicates if the school has a Crisis Plan policy in place.</p> <p>If a policy record exists with a value of 05 that is active for the full extract Date Range, reports as true. Otherwise reports as false.</p> <p><i>Alphanumeric</i></p>	<p>System Administration > Resources > Sch Policy > Policy</p> <p>schoolPolicy.policy</p>
Incident	<p>Reports one behavior event per incident with a valid State Event Code mapping and a S mapped Resolution within the extract Date Range or school year. Must have a participa Role of Offender and a Relationship to School of 1 or 4. Reports the most severe (lowest) event.</p>	
External Incident ID	<p>The Incident ID for events with mapped State Event Codes.</p>	<p>Student Information > Behavior > Event > Number</p>

Element Name	Description & Format	Campus Location
School Number	The School ID of the school reporting the incident. <i>Alphanumeric</i>	System Administration > Resources > Sch School Number School.number
Incident Date	The date the incident took place. <i>Date</i>	Behavior > Behavior Management > Incid Incident BehaviorIncident.date
Time of Incident	The time the incident took place. <i>Numeric</i>	Behavior > Behavior Management > Incid Context BehaviorIncident.context
Cost to Property	The cost the school incurred by this event. <ul style="list-style-type: none"> • If zero, reports as 1 • If 500 or less, reports as 2 • If greater than 500, reports as 3. <i>Numeric</i>	Behavior > Behavior Management > Incid Damages
Incident Location	Reports the total number of locations listed.	
Incident Location	The location of the incident <i>Numeric</i>	Behavior > Behavior Management > Incid Location BehaviorIncident.location
Number of Unknown Offenders	The total number of unknown offenders. <i>Numeric</i>	Behavior > Behavior Management > Even of Unknown Offenders BehaviorEvent.unknownOffenders
Offender	Reports the total number of offenders. Students must have a Primary enrollment active of Incident with at least one State Code mapped Resolution.	
MARSS Number	The state identification number of the student offender. Student must have a Role of Offender and a Relationship to School of Student <i>Alphanumeric</i>	Census > People > Demographics > Persc > Student State ID Person.stateID
Was Under Current Suspension	Indicates if the offender was suspended at the time of the incident. Reports as true if a previous Resolution record exists for the Offender in which they were an Offender with a Resolution of 1 or 2 and the Resolution End Date is null or after the Date of Incident. Otherwise reports as false. <i>Alphanumeric</i>	Behavior > Behavior Management > Reso Calculated

Element Name	Description & Format	Campus Location
Was Referred Law Enforcement	Indicates if the Offender was referred to law enforcement. <i>Alphanumeric</i>	Behavior > Behavior Management > Reso Referred to Law Enforcement BehaviorResolution.lawEnforcement
Was Arrested Law Enforcement	Reports as true if the Arrest Made checkbox is marked on the resolution. Otherwise reports as false. <i>Alphanumeric</i>	Behavior > Behavior Management > Reso Arrest Made BehaviorResolution.arrestMade
Offender Activity	Reports the total count of Offender activity records.	
Offender Activity Type	Reports the State Event Code of the reported incident when the participant has a Role of Offender. <i>Alphanumeric</i>	Behavior > Behavior Management > Even Name BehaviorEvent.name
Offense Type	The Offense Type code. Reports if the Role is Offender and the Offender Activity Type State Event Code is 1, 2, 3, 6, 12, or 13. <i>Alphanumeric</i>	Behavior > Behavior Management > Parti Offense Type BehaviorRole.motivationCode
Weapon	Reports the total count of weapons recorded.	
Weapon Type	The type of weapon used. Reports the Weapon Type if the Event Type is 22 and Role is Offender. <i>Alphanumeric</i>	Behavior > Behavior Management > Incid Participant > Weapon Type BehaviorWeapon.weaponType
Number Weapons Involved	The number of weapons used. Reports the Weapon Type if the Event Type is 22 and Role is Offender. <i>Numeric</i>	Behavior > Behavior Management > Incid Participant > Weapon Type Calculated
Was Used as a Dangerous Weapon State	Indicates if the weapon used meets the state statute to be a dangerous weapon. If Dangerous Weapon is 01 or 03 and Role is Offender, reports as true. Otherwise reports as false. <i>Alphanumeric</i>	Behavior > Behavior Management > Incid Participant > Dangerous Weapon BehaviorWeapon.weaponCategory2
Was Used as a Dangerous Weapon Fed	Indicates if the weapon used meets the federal statute to be a dangerous weapon. If Dangerous Weapon is 02 or 03 and Role is Offender, reports as true. Otherwise reports as false. <i>Alphanumeric</i>	Behavior > Behavior Management > Incid Participant > Dangerous Weapon BehaviorWeapon.weaponCategory2

Element Name	Description & Format	Campus Location
Bullying Harassment Type	The type of harassment committed by the offending participant. Reports the Harassment Type code(s) selected on the Event with a Role of Offender. Does not report if no Harassment Type is selected. <i>Alphanumeric</i>	Behavior > Behavior Management > Incident Participant > Harassment Type BehaviorHarassment.harassmentType
Is Gun Loaded	If a gun was part of the incident, indicates if the gun was loaded. If Weapon Status is 01, 03, 05, or 07 and Role is Offender, reports as true. Otherwise reports as false. <i>Alphanumeric</i>	Behavior > Behavior Management > Incident Participant > Weapon Status BehaviorWeapon.weaponCategory
Is Gun Cased	If a gun was part of the incident, indicates if the gun was cased. If Weapon Status is 02, 03, 06 or 07 and Role is Offender, reports as true. Otherwise reports as false. <i>Alphanumeric</i>	Behavior > Behavior Management > Incident Participant > Weapon Status BehaviorWeapon.weaponCategory
Is Gun in Trunk	If a gun was part of the incident, indicates if the gun was in the trunk. If Weapon Status is 04, 05, 06, or 07 and Role is Offender, reports as true. Otherwise reports as false. <i>Alphanumeric</i>	Behavior > Behavior Management > Incident Participant > Weapon Status BehaviorWeapon.weaponCategory
Drug Type	Reports the total count of drugs reported.	
Drug Type	If the Event Type is 13 and Role is Offender, reports the Drug Type selected. <i>Alphanumeric</i>	Behavior > Behavior Management > Incident Participant > Drug Type BehaviorDrug.drugType
Drug Type Other Description	Currently not reported.	N/A
Disciplinary Action	Reports the total count of Resolutions (Disciplinary Actions) reported. Reports the Resolution is Offender, Relationship to School is 1 or 4, Event Type is state mapped, and Resolution Code is 1-12	

Element Name	Description & Format	Campus Location
Disciplinary Action Type	<p>Reports the State Code of the Resolution if Role is Offender, Relationship to School is 1 or 4, the Incident Event Type is mapped to a State Event Code and the Resolution is mapped to a State Resolution Code of 1-13.</p> <p>A value of 12 only reports if either of the following is true:</p> <ul style="list-style-type: none"> • Extract fields report as follows: Victim Type reported as 2 or 3, Physical Assault State reported as F and Offender Activities reported as 3 with an Offense Type of 1. • Extract fields report as follows: Victim Type reported as 2 or 3 and Offender Activity is 2, 4, 22, or 28. <p><i>Alphanumeric</i></p>	<p>Behavior > Behavior Management > Incident Resolution > Resolution Type</p> <p>BehaviorResolution.stateResCode</p>
No Response Explanation	<p>Reports Details if Behavior Resolution Type is 11, 12, or 13.</p> <p><i>Alphanumeric</i></p>	<p>Behavior > Behavior Management > Incident Resolution > Details</p> <p>BehaviorResolution.details</p>
Was DAT Through Year	<p>Indicates if the expulsion lasted through the end of the current school year. If Behavior Resolution Type is 3, Role is Offender and Relationship to School is 1 or 4, reports as true. Otherwise reports as false. If Behavior Resolution Type is not 3, does not report.</p> <p><i>Alphanumeric</i></p>	<p>Behavior > Behavior Management > Incident Resolution > Resolution Type</p> <p>Calculated</p>
Num Days	<p>The number of school days the Resolution lasted. If Behavior Resolution Type is 1-6 or 12, reports Total Discipline Days.</p> <p><i>Numeric</i></p>	<p>Behavior > Behavior Management > Incident Resolution > Total Discipline Days</p>
Start Date	<p>The Start Date of the resolution if the Type was 3, 4, or 12.</p> <p><i>Date</i></p>	<p>Behavior > Behavior Management > Incident Resolution > Resolution Start Date</p> <p>BehaviorResolution.startDate</p>
End Date	<p>The End Date of the resolution if the Type was 3, 4, or 12.</p> <p><i>Date</i></p>	<p>Behavior > Behavior Management > Incident Resolution > Resolution End Date</p> <p>BehaviorResolution.endDate</p>

Element Name	Description & Format	Campus Location
Was Expulsion Modified	Indicates if the student returned to school prior to the end date on a school board resolution. If Reports as true if Type is 3 and Number of Days Reduced is entered. Otherwise reports as false. If Behavior Resolution Type is not 3, does not report. <i>Alphanumeric</i>	Behavior > Behavior Management > Incident Resolution > Number of Days Reduced Calculated
Num Days Expulsion Reduced	The number of days the expulsion was reduced from the original resolution. If Type is 2 and the expulsion was modified, reports the Number of Days Reduced. <i>Alphanumeric</i>	Behavior > Behavior Management > Incident Resolution > Number of Days Reduced
Did Return Before End School Year	Indicates if the student returned before the end of the school year. Reports as true if Resolution End Date is before the school year End Date and the expulsion was modified. <i>Alphanumeric</i>	Behavior > Behavior Management > Incident Resolution > Resolution End Date Calculated
AES Type	Indicates the student was suspended from school for more than 5 days. Reports the Alternate Education Setting if Resolution Type is 2 - 6 and the Duration in School Days is greater than 5. <i>Alphanumeric</i>	Behavior > Behavior Management > Incident Resolution > Alternate Education Settings BehaviorResolution.altEducationSetting
AES No Service Proved Explanation	Reports the Resolution Details if the Alternate Education Setting of 15 is selected, the Behavior Resolution was mapped to a state code of 2, 3, 5, or 6, and the Duration was greater than 5 days. Otherwise reports as blank. <i>Alphanumeric</i>	Behavior > Behavior Management > Incident Resolution > Details BehaviorResolution.details
Victim	Reports the total count of victims.	
Victim Type	Reports the Relationship to School of the participant with a Role of Victim. <i>Alphanumeric</i>	Behavior > Behavior Management > Incident Participant > Relationship to School BehaviorRole.relationshipToSchool
Multiple Victim Count	Reports the Total count of Number of Unknown Victims, Number of Student Victims, and Number of School Personnel Victims when Relationship to School is 2-5. <i>Numeric</i>	Behavior > Behavior Management > Incident Participant > Relationship to School, Num Calculated

Element Name	Description & Format	Campus Location
Estimated Victims Enrolled	<p>Reports the Number of Student Victims entered on the event.</p> <p><i>Numeric</i></p>	<p>Behavior > Behavior Management > Incident > Number of Student Victims</p> <p>BehaviorEvent.numOfStuVictims</p>
Estimated Victims Not Enrolled	<p>Reports the Number of Unknown Victims entered on the event.</p> <p><i>Numeric</i></p>	<p>Behavior > Behavior Management > Incident > Number of Unknown Victims</p> <p>BehaviorEvent.numOfNonSchVictims</p>
MARSS Number	<p>Reports the Student State ID of the participant with a Role of Victim and a Relationship to School of 1.</p> <p><i>Numeric</i></p>	<p>Census > People > Demographics > Person > State ID</p> <p>Person.stateID</p>
Did Injury Occur	<p>Indicates whether an injury occurred related to the incident. Reports as true if Injury is 2, 3, or 4 and Role is Victim. Otherwise reports as false.</p> <p><i>Alphanumeric</i></p>	<p>Behavior > Behavior Management > Incident Participant > Injury</p> <p>BehaviorRole.injury</p>
Was Serious Bodily Injury	<p>Indicates if injury qualified as serious bodily injury based on federal law. Reports as true if Injury is 4 and Role is Victim. Otherwise reports as false.</p> <p><i>Alphanumeric</i></p>	<p>Behavior > Behavior Management > Incident Participant > Injury</p> <p>BehaviorRole.injury</p>
Aware Reporting Assault	<p>Indicates that the reported is aware that the incident included a victim who is a district employee, but that the incident is not being reported as such based on 121A.53.</p> <p>To report, export fields must report as follows:</p> <p>Reports as 1 if the Not Reported 121A.53 checkbox is marked and either of the following are true:</p> <ul style="list-style-type: none"> • Extract fields report as follows: Victim Type reported as 2 or 3, Physical Assault State reported as F and Offender Activities reported as 3 with an Offense Type of 1. • Extract fields report as follows: Victim Type reported as 2 or 3 and Offender Activity is 2, 4, 22, or 28. <p>If checkbox is not marked, reports as 0.</p> <p><i>Numeric</i></p>	<p>Behavior > Behavior Management > Incident Participant > Not Reported 121A.53</p> <p>BehaviorRole.notReported121A.53</p>

Element Name	Description & Format	Campus Location
Cost to Victim	<p>The medical cost to the victim incurred by the event.</p> <ul style="list-style-type: none"> • If zero, reports as 1 • If 500 or less, reports as 2 • If greater than 500, reports as 3. <p><i>Numeric</i></p>	<p>Behavior > Behavior Management > Participant to Victim</p> <p>BehaviorRole.cost</p>
Physical Assault State	<p>Indicates if the incident is being reported to fulfill the state statute to report assault of a district employee. Reports as true if Physical Assault of a District Employee is marked. Otherwise reports as false.</p> <p><i>Alphanumeric</i></p>	<p>Behavior > Behavior Management > Incident Participant > Physical Assault of District Employee</p> <p>BehaviorRole.physicalAssaultOfEmployee</p>