

EMIS Special Ed Reported Fields (Ohio)

Last Modified on 10/22/2022 10:33 am CDT

The following sections document the specific fields on the Ohio Evaluation, Individual Education Plan, and Special Ed Dates tab used for state reporting purposes. For more specific information about the Evaluation, IEP, and Special Ed Dates tab, see the corresponding linked documentation for each section below.

[Ohio Evaluation \(ETR\)](#) | [Ohio Individual Education Plan \(IEP\)](#) | [Special Ed Dates Tool](#) | [Special Ed Dates Detail](#)

See the Ohio Department of Education Special Education website (education.ohio.gov) for specific details on how to enter data into these editors and tool.

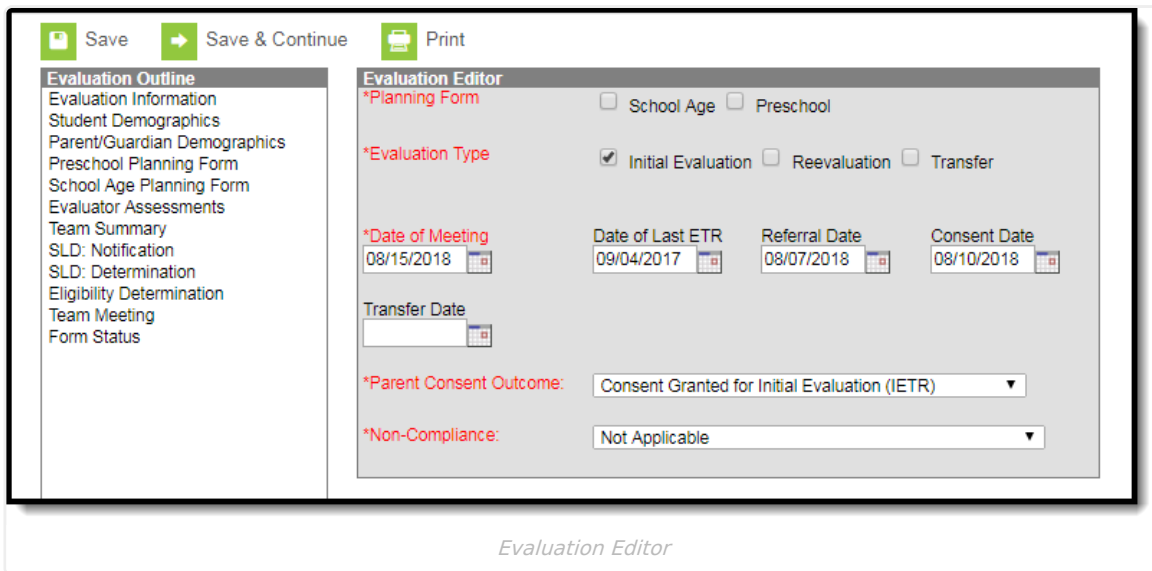
Ohio Evaluation (ETR)

Classic View: Student Information > Special Ed > General > Documents > Evaluations

The Individual Education Program (IEP) or Evaluation team uses the Evaluation to document the student's educational needs and the student's determination of eligibility for special education.

See the [Ohio Evaluation Summary Report](#) document for the most updated format of the Evaluation.

Evaluation Editor



The screenshot shows the 'Evaluation Editor' interface. At the top, there are three buttons: 'Save', 'Save & Continue', and 'Print'. On the left is a sidebar menu titled 'Evaluation Outline' with items: Evaluation Information, Student Demographics, Parent/Guardian Demographics, Preschool Planning Form, School Age Planning Form, Evaluator Assessments, Team Summary, SLD: Notification, SLD: Determination, Eligibility Determination, Team Meeting, and Form Status. The main area is titled 'Evaluation Editor' and contains several sections:

- *Planning Form:** Includes checkboxes for 'School Age' and 'Preschool'.
- *Evaluation Type:** Includes a checked checkbox for 'Initial Evaluation' and unchecked checkboxes for 'Reevaluation' and 'Transfer'.
- *Date of Meeting:** A date field with a calendar icon, currently showing 08/15/2018.
- Date of Last ETR:** A date field with a calendar icon, currently showing 09/04/2017.
- Referral Date:** A date field with a calendar icon, currently showing 08/07/2018.
- Consent Date:** A date field with a calendar icon, currently showing 08/10/2018.
- Transfer Date:** An empty date field with a calendar icon.
- *Parent Consent Outcome:** A dropdown menu currently set to 'Consent Granted for Initial Evaluation (IETR)'.
- *Non-Compliance:** A dropdown menu currently set to 'Not Applicable'.

Below the screenshot, the text 'Evaluation Editor' is centered.

Evaluation Type

The Evaluation Type field is used to indicate the intended use for the evaluation, whether the student is being evaluated for the first time, reevaluated, or transferred.

▶ [Click here to expand...](#)

Date of Meeting

The date of the Evaluation Meeting.

▶ [Click here to expand...](#)

Date of Last ETR

The date of the previous Evaluation.

▶ [Click here to expand...](#)

Referral Date

The date the student was referred for evaluation.

▶ [Click here to expand...](#)

Consent Date

The date the parent/guardian provided consent for evaluation.

▶ [Click here to expand...](#)

Transfer Date

The date the student transferred.

▶ [Click here to expand...](#)

Parent Consent Outcome

The Parent Consent Outcome field is used to indicate the details of how the parent/guardian consented for evaluation.

▶ [Click here to expand...](#)

Non-Compliance

The Non-Compliance field is used to indicate the reason the special education even has not met federally mandated time lines, if applicable.

▶ [Click here to expand...](#)

Eligibility Determination Editor

Save Save & Continue Print

Evaluation Outline

Evaluation Information

Student Demographics

Parent/Guardian Demographics

Preschool Planning Form

School Age Planning Form

Evaluator Assessments

Team Summary

SLD: Notification

SLD: Determination

Eligibility Determination

Team Meeting

Form Status

Eligibility Determination

ELIGIBILITY DETERMINATION

It is the determination of the team that:

The determining factor for the child's poor performance is not due to a lack of appropriate instruction in reading or math or the child's limited English proficiency. Yes No

For the preschool-age child, the determining factor for the child's poor performance is not due to a lack of preschool pre-academics.

The child meets the state criteria for having a disability (or continuing to have a disability) based on the data provided in this document. Yes No

The child demonstrates an educational need that requires specially designed instruction Yes No

If the response is **NO** to any question, then the child is **NOT** eligible for special education.
If the response to all three questions is **YES**, then the child **IS** eligible for special education.

*Primary Disability:

BASIS FOR ELIGIBILITY DETERMINATION: (or Continued Eligibility)
Provide a justification for the eligibility determination decision, describing how the student meets or does not meet the eligibility criteria as defined in OAC Rule 3301-51-01 (B)(10) (Definitions) and OAC Rule 3301-51-06 (Evaluations). **Include** how the disability affects the child's progress in the general education curriculum.

Eligibility Determination Editor

Primary Disability

The Primary Disability field is used to designate the student's officially identified primary disability.

► [Click here to expand...](#)

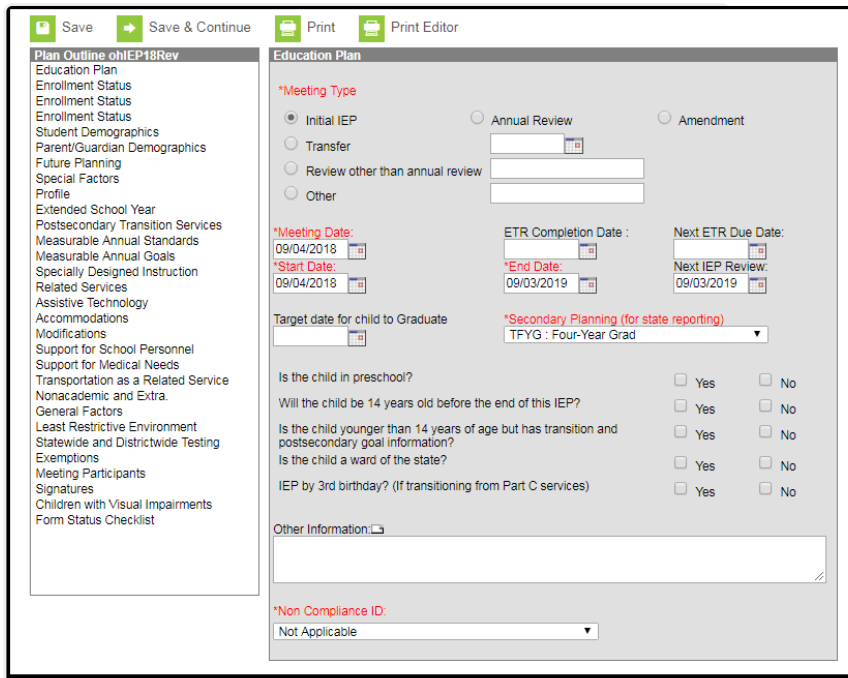
Ohio Individual Education Plan (IEP)

Classic View: Student Information > Special Ed > General > Documents > Plans

The Individual Education Plan is used to document all required special education information by the state of Ohio.

See the [Ohio Individual Education Plan](#) document for the most updated format of the IEP.

Education Plan Editor



Education Plan Editor

Meeting Type

Meeting Type is used to indicate the type of meeting the team members had that is being document in this plan.

▶ [Click here to expand...](#)

Meeting Date

The Meeting Date is the date on which the team members met.

▶ [Click here to expand...](#)

Start and End Date

The projected start and end date of the student's plan.

▶ [Click here to expand...](#)

Secondary Planning (for state reporting)

The Secondary Planning (for state reporting) field is used to document the transition planning designation for the student.

▶ [Click here to expand...](#)

Non Compliance ID

The Non-Compliance ID field is used to indicate the reason the special education even has not met federally mandated time lines, if applicable.

▶ [Click here to expand...](#)

Enrollment Status Editor

Three options are available for the Enrollment Status editor. The first is a read only editor that pulls information from the student's Enrollment tab. The second pulls information from the student's Enrollment tab and certain fields can be modified. The third pulls information from the student's Enrollment tab, certain fields can be modified, and when the plan is Locked, this data is then pushed back to the student's Enrollment tab and overrides existing data.

It is recommended that a district selects one of these editors to use and hide the unused editors to avoid confusion.

Enrollment Status Editor

Primary Disability

The Primary Disability field is used to designate the student's officially identified primary disability.

▶ [Click here to expand...](#)

Special Ed Status

The Special Ed Status field is used to indicate the student's defined special ed status.

▶ [Click here to expand...](#)

Special Ed Setting

The Special Ed Setting field.

▶ [Click here to expand...](#)

Transportation as a Related Service

Transportation as a Related Service Editor

Does the child require special transportation?

This question is used to indicate if the student requires any transportation services.

▶ [Click here to expand...](#)

Statewide and Districtwide Testing Editor

Statewide and Districtwide Testing Editor

Is the child participating in the Alternate Assessment for Students with Significant Cognitive Disabilities (AASCD)?

This question is used to indicate if the student is participating in an alternate assessment.

▶ [Click here to expand...](#)

Will the child participate in district wide and state wide assessments with accommodations?

This question is used to indicate if the student is participating in district wide and state wide assessments with accommodations.

▶ [Click here to expand...](#)

Detail of Accommodations

Any information regarding the specific accommodation for the student.

▶ [Click here to expand...](#)

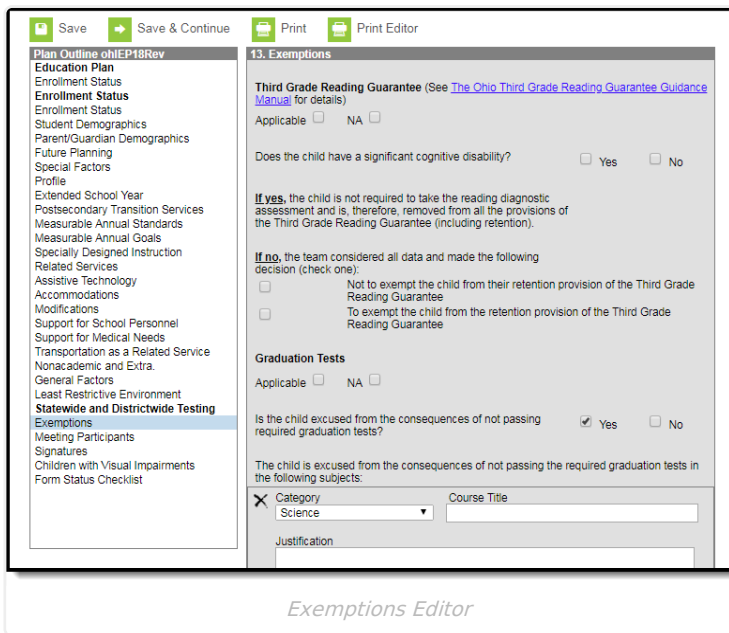
▶ [Click here to expand...](#)

Test Mode

Indicates the form by which the student will be taking the statewide test. Options include: P: Paper, O: Online, S: Supplemental, and N: Not Eligible. Values in this dropdown cannot be modified.

▶ [Click here to expand...](#)

Exemptions Editor



Exemptions Editor

Is the child excused from the consequences of not passing required graduation tests?

Indicates if the student is exempt from consequences for failing required graduation tests.

▶ [Click here to expand...](#)

Category

Indicates the area of study in which the student is exempt.

▶ [Click here to expand...](#)

Special Ed Dates Tool

Classic View: Student Information > Special Ed > General > Special Ed Dates

Search Terms: Special Ed Dates

The Special Ed Dates tool is a data entry tool used to store special education information for Ohio state reporting purposes.

Summary
Team Members
Documents
Contact Log
Special Ed Dates

Save
 Delete
 New Status

Special Ed Dates Editor

Date	Exit Date	Exit Reason	Preschool Transition Conference Date	Federal LRE Setting
09/26/2018				

Special Ed Dates Detail

***Date**

NIEP Event Type

Outcome
 ▼

Non Compliance
 ▼

Outcome Beginning Date Outcome Ending Date

SEMD Event Type

Manifestation Determination Date

Evaluation

Exit Date Exit Reason ▼

Preschool Transition Conference Date

Updated October 31 IEP Outcome

Federal LRE Date Federal LRE Setting ▼

Ohio Special Ed Dates Tool

Special Ed Dates Detail

Field	Description	Ad Hoc / Database Location	Report
Date <i>Required</i>	The date the record was created.	Student > Learner Planning > SPED Dates > specialEdDates.statusDate SpecialEdDates.statusDate	N/A
NIEP Event Type			
Outcome	The outcome of the NIEP Event Type.	Student > Learner Planning > SPED Dates > specialEdDates.outcome SpecialEdDates.outcome	This field reports as the Outcome ID field on the NIEP Event Type on the Student SPED Records (GE). See the Student SPED Record (GE) documentation for the report logic .

Field	Description	Ad Hoc / Database Location	Report
Non Compliance	The reason an event has not met federally mandated timelines.	Student > Learner Planning > SPED Dates > specialEdDates.nonCompliance SpecialEdDates.nonCompliance	This field reports as the Non-compliance ID field on the NIEP Event Type on the Student SPED Records (GE). See the Student SPED Record (GE) documentation for the report logic .
Outcome Beginning Date	The day on which the outcome of the event is effective.	Student > Learner Planning > SPED Dates > specialEdDates.outcomeBeginningDate SpecialEdDates.outcomeBeginningDate	This field reports as the Outcome Beginning Date field on the NIEP Event Type on the Student SPED Records (GE). See the Student SPED Record (GE) documentation for the report logic .
Outcome Ending Date	The last day on which the outcome of the event is effective.	Student > Learner Planning > SPED Dates > specialEdDates.outcomeEndDate SpecialEdDates.outcomeEndDate	This field reports as the Outcome End Date on the NIEP Event Type of the Student SPED Records (GE). See the Student SPED Record (GE) documentation for the report logic .
SEMD Event Type			
Manifestation Determination Date	The date the manifestation determination was completed for the related incident of misconduct.	Student > Learner Planning > SPED Dates > specialEdDates.manifestationDeterminationDate SpecialEdDates.manifestationDeterminationDate	This field reports as the Date field on the SEMD Event Type of the Student SPED Records (GE). See the Student SPED Record (GE) documentation for the report logic.
Evaluation			

Field	Description	Ad Hoc / Database Location	Report
Exit Date	The exit date of the student's evaluation.	Student > Learner Planning > SPED Dates > specialEdDates.exitDate SpecialEdDates.exitDate	<p>This field is used to calculate the Split Record Population Logic on the Student Attributes Effective Date Record (FD). See the Student Attributes Effective Date Record (FD) documentation for report logic.</p> <p>If the Exit Date matches the Meeting Date of the Evaluation, the Exit Reason will report in the Outcome ID field on the Student SPED Records (GE). See the Student SPED Record (GE) documentation for the report logic.</p>
Exit Reason	The reason the student is exiting.	Student > Learner Planning > SPED Dates > specialEdDates.exitReason SpecialEdDates.exitReason	<p>This field is used to calculate the Split Record Population Logic on the Student Attributes Effective Date Record (FD). See the Student Attributes Effective Date Record (FD) documentation for report logic.</p> <p>If the Exit Date matches the Meeting Date of the Evaluation, the Exit Reason will report in the Outcome ID field on the Student SPED Records (GE). See the Student SPED Record (GE) documentation for the report logic.</p>

Field	Description	Ad Hoc / Database Location	Report
Preschool Transition Conference Date	This is the date of the preschool transition conference arranged by the Early Intervention Service Coordinator (Department of Health) with the school district.	Student > Learner Planning > SPED Dates > specialEdDates.pstcDate SpecialEdDates.pstcDate	This field is used to calculate the PSTC Event Type on the Student SPED Records (GE). See the Student SPED Record (GE) documentation for the report logic .
Updated October 31 IEP Outcome			
Federal LRE Date	The Date of the Federal LRE outcome.	Student > Learner Planning > SPED Dates > specialEdDates.federalLREDate SpecialEdDates.federalLREDate	This field reports as the Updated October 31 IEP Outcome field on the Student Attributes - No Date Record (FN). See the Student Attributes - No Date Record (FN) documentation for report logic.

Field	Description	Ad Hoc / Database Location	Report
Federal LRE Setting	<p>This field is used when the federal SPED setting for the student differs from the ODE SPED setting of the student. The Least Restrictive Environment (LRE) outcome as of October 31 for a student whose IEP currently on file with ODE does not reflect the current LRE for a student with a disability.</p>	<p>Student > Learner Planning > SPED Dates > specialEdDates.amendedOutcome</p> <p>SpecialEdDates.amendedOutcome</p>	<p>This field reports as the Updated October 31 IEP Outcome field on the Student Attributes - No Date Record (FN). See the Student Attributes - No Date Record (FN) documentation for report logic.</p>