

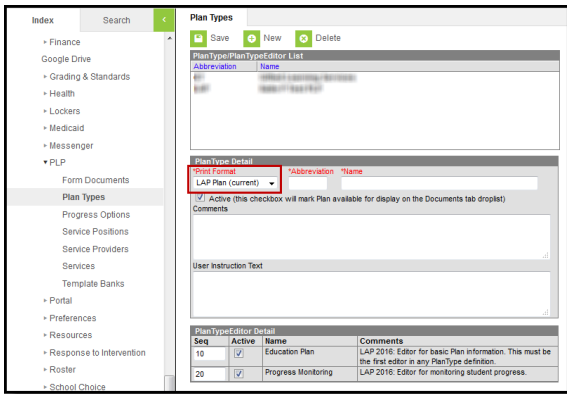
# LAP Plan (Washington)

Last Modified on 10/22/2022 10:40 am CDT

**PATH:** *Student Information > PLP > General > Documents*

The LAP Plan collects data for the [LAP Student Growth File \(Q\) Extract \(Washington\)](#), reporting academic growth for students participating in a Learning Assistance Program.

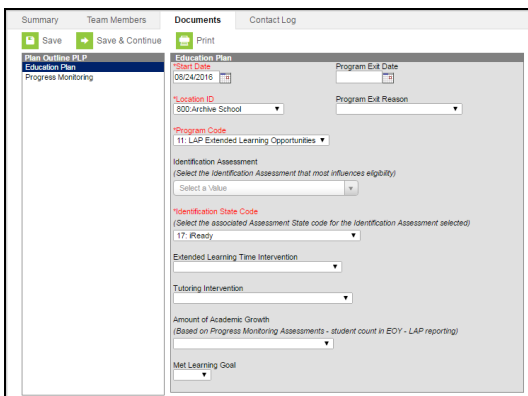
To create this PLP, begin with a Plan Type created in System Administration > PLP > [Plan Types](#). Plans should have a print format of **LAP Plan (current)**. This print format includes necessary information needed in the LAP Student Growth File.



Select the LAP Plan print format for the Plan Type

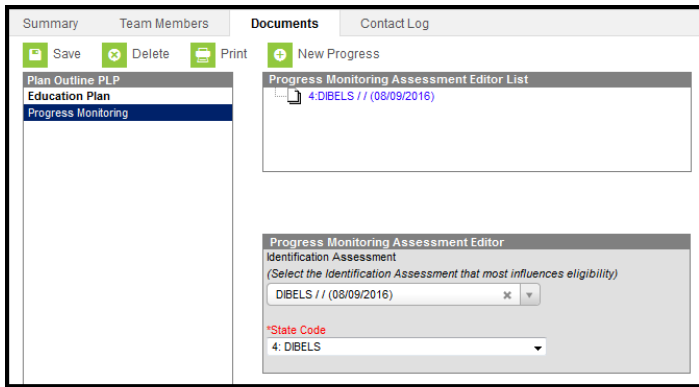
Counselors add PLPs to student on the [Documents](#) tab. The name of the document may vary based on district setup.

Click **New Document**, select **Create New Plan** and the applicable LAP Plan, and then click **Create Document**.



Example of an LAP Plan

The Assessments fields on the Education Plan and Progress Monitoring editors populate assessments recorded on the student's Assessment tab.



Review the article for the [LAP Student Growth File \(Q\)](#) to learn which fields from the LAP Plan are reported.