

Recommended Browser Settings

Last Modified on 10/22/2022 10:45 am CDT

Infinite Campus recommends modifying certain browser settings for optimal use of Infinite Campus software. Browsers should be kept current by applying service packs and updates as provided by the operating system. Infinite Campus currently supports Edge, Mozilla Firefox, and Google Chrome browsers on a PC platform. Mozilla Firefox, Safari, and Chrome browsers are supported on the Macintosh platform.

Infinite Campus cannot guarantee full support of all browsers or all versions. Please see the [Supported Platforms](#) page for more up-to-date information on browser and platform support.

Recommended settings for the Edge browser are currently under construction.

FireFox	Chrome
<p>PC</p> <ul style="list-style-type: none"> • Pop-Up Settings (Mozilla) • Privacy Settings (Mozilla) • Form and Password Settings (Mozilla) • Cache Management Settings (Mozilla) • Download Settings (Mozilla) <p>Mac</p> <ul style="list-style-type: none"> • Content Settings (Mozilla Mac) • Advanced Network Settings (Mozilla Mac) • Privacy Settings (Mozilla Mac) • Security Settings (Mozilla Mac) 	<ul style="list-style-type: none"> • Download Settings (Chrome) • Privacy Settings (Chrome) • Content Settings (Chrome) • Clearing the Browser History (Chrome)
Edge	Safari
<ul style="list-style-type: none"> • Password Settings (Edge) • Download Settings (Edge) • Pop-Up Settings (Edge) • Clear Browsing Data (Edge) 	<ul style="list-style-type: none"> • Security Settings (Safari)

Opening multiple instances of Campus in the same browser is not supported and can lead to data issues.

Mozilla Firefox Settings (PC)

For the most recent browser versions that are supported in Campus, see the [Supported Platforms](#) article.

- [Pop-Up Settings \(Mozilla\)](#)
- [Privacy Settings \(Mozilla\)](#)
- [Form and Password Settings \(Mozilla\)](#)
- [Cache Management Settings \(Mozilla\)](#)
- [Download Settings \(Mozilla\)](#)

The following settings were based off of a Firefox 60.0.1. The names of settings and their locations may vary slightly in other versions.

To protect security, the following browser options should be configured. To access browser settings, navigate to the three slash marks icon in the upper right-hand corner of the browser and select **Options**.

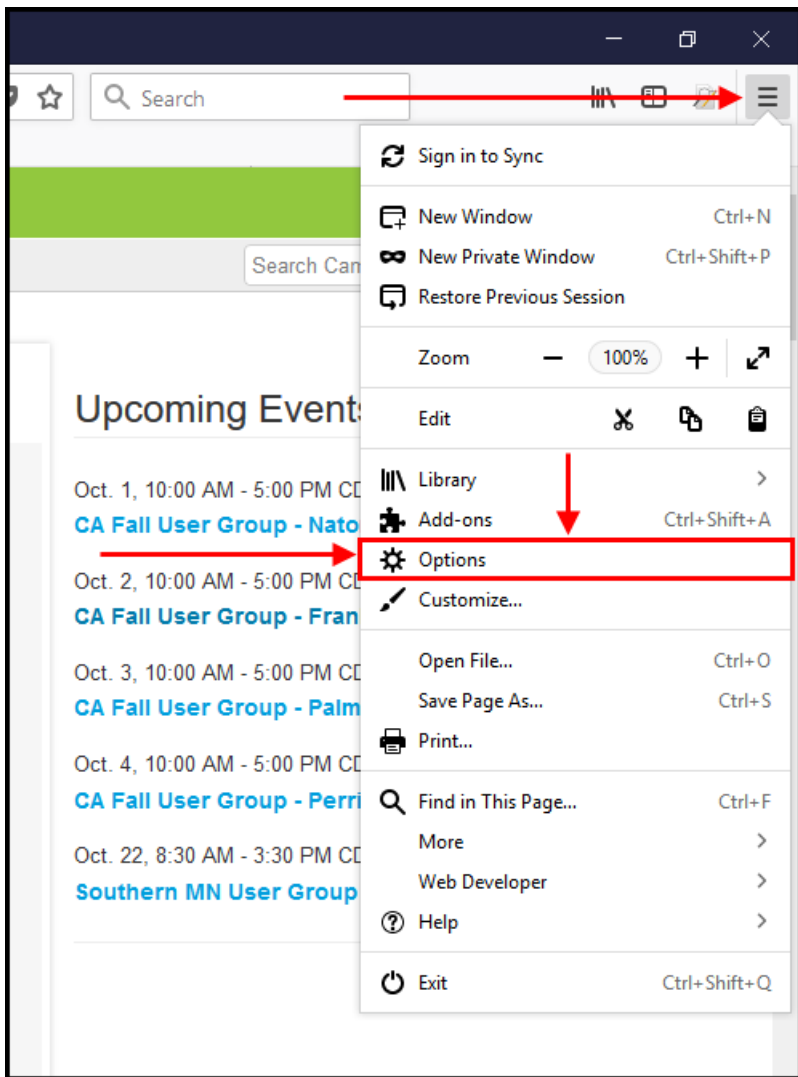


Image 12: Accessing Options (Firefox for Windows)

Pop-Up Settings (Mozilla)

In the Privacy and Security area:

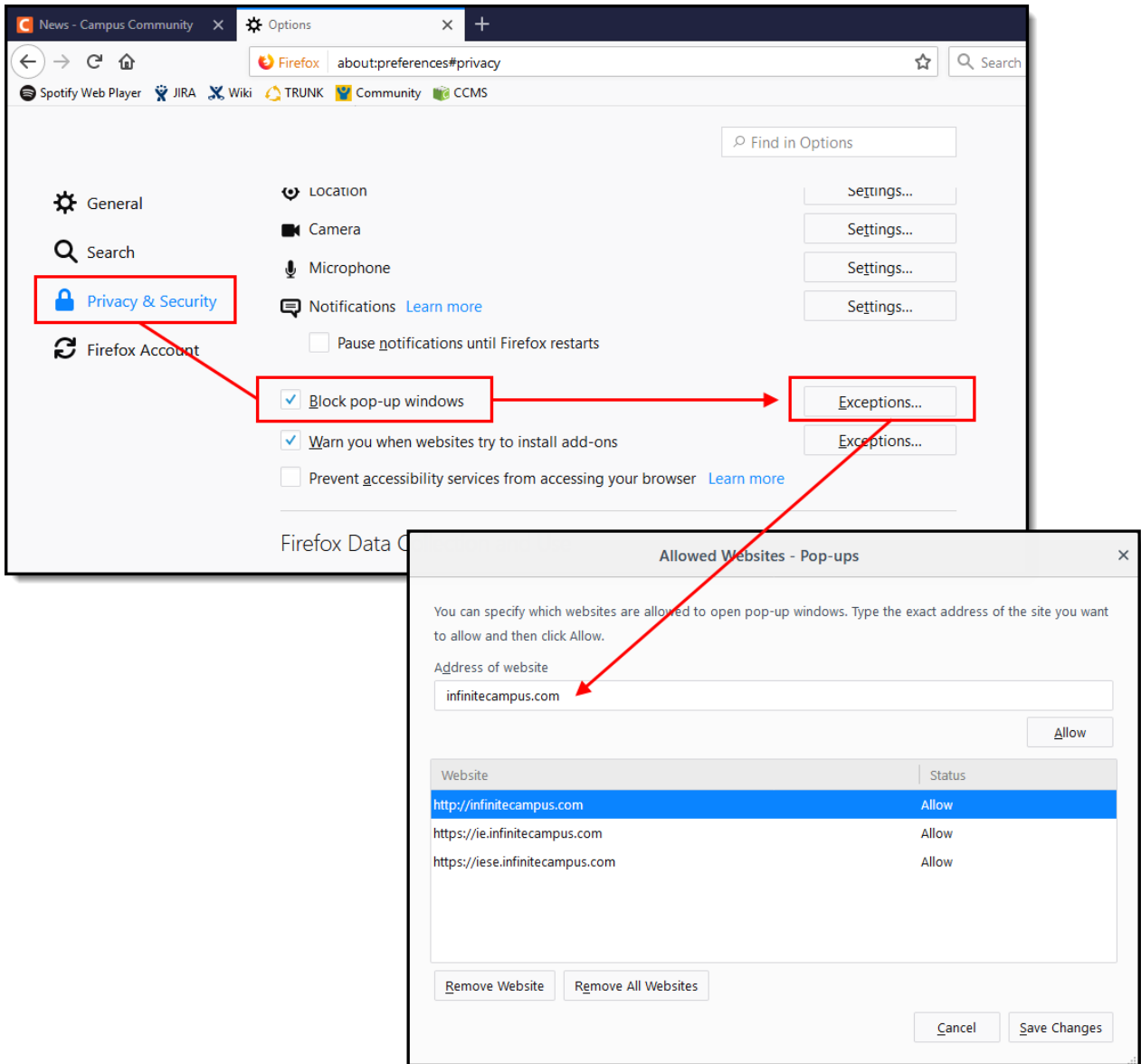


Image 13: Settings for Pop-Ups (Firefox for Windows)

Pop-up windows must be allowed on the Infinite Campus site in one of the following manners:

- Either the **Block Pop-Up Windows** checkbox is left unmarked, **OR**
- The **Block Pop-Up Windows** checkbox is marked, but the Infinite Campus site is on the Allowed Sites list:
 - Click the **Exceptions** button.
 - Enter the Infinite Campus site URL in the **Address of Web site** field.
 - Click **Allow**.
 - Click **Save Changes**.

Privacy Settings (Mozilla)

In the History section of Privacy and Security area:

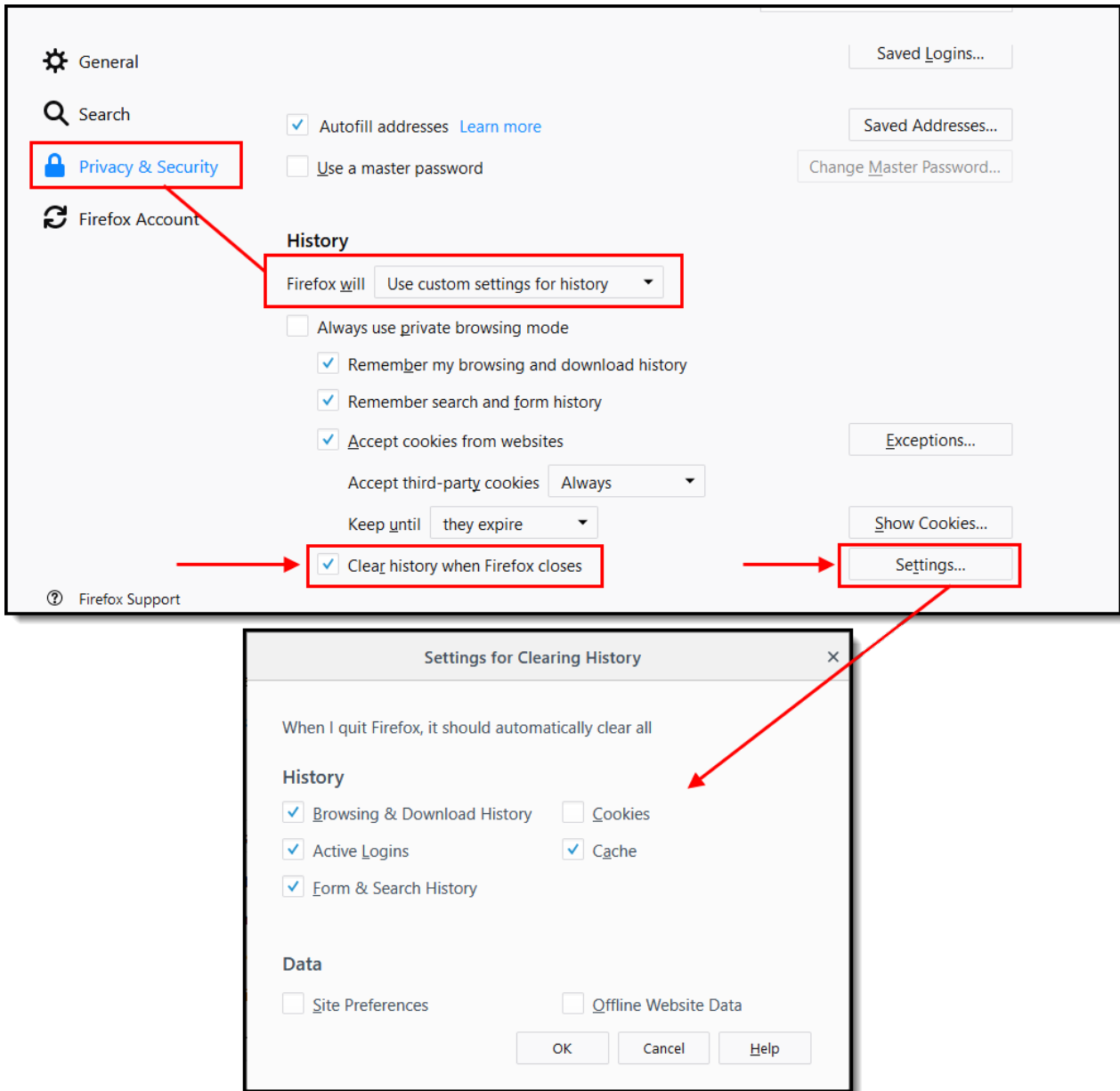


Image 14: Privacy Settings for Private Data (Firefox for Windows)

1. Select **Use custom settings for history** in the first dropdown list.
2. Mark the **Clear history when Firefox closes** checkbox.
3. Click the **Settings** button.
4. Mark (at least) the following checkboxes: **Form & Search History** and **Cache**.

Deleting cookies will cause the device to no longer be recognized by Campus and will require you to go through the [login security process](#) the next time you log into Campus.

5. Click **OK**.

To clear history at any time, select **CTRL+Shift+Del** or select **Clear Recent History** under **Tools**.

Form and Password Settings (Mozilla)

It is important to not have Campus login credentials auto-populate within your browser. Auto-populated credentials create a security hole where any user who gains access to the computer has the ability to log into Campus as the staff member.

In the Forms & Privacy section of the Privacy & Security area:

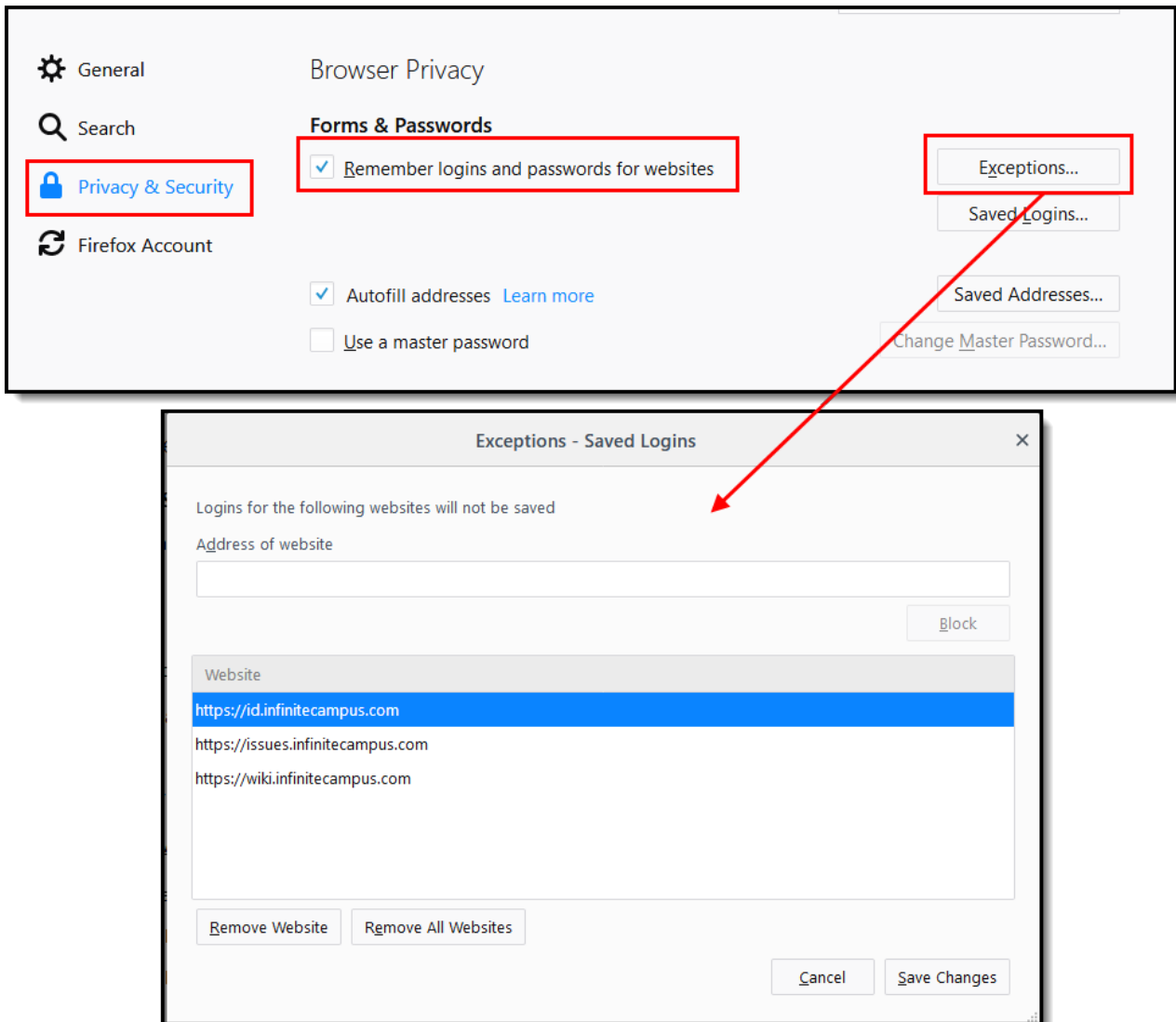


Image 15: Form and Password Settings (Firefox for Windows)

In the Passwords section:

- Remove the checkmark from the **Remember Passwords For Sites** checkbox, **OR**,
- If passwords should be remembered, mark the **Remember Passwords For Sites** checkbox but verify that Infinite Campus sites are on the **Exception** list:
 - Click the **Exceptions** button:
 - Check for Infinite Campus sites on the Exceptions window. If Infinite Campus sites do not appear:
 - Enter the Campus address and click **Block**. This ensures Campus login

credentials will not auto populate for users.

Cache Management Settings (Mozilla)

In the Cached Web Content section of the Privacy and Security area:

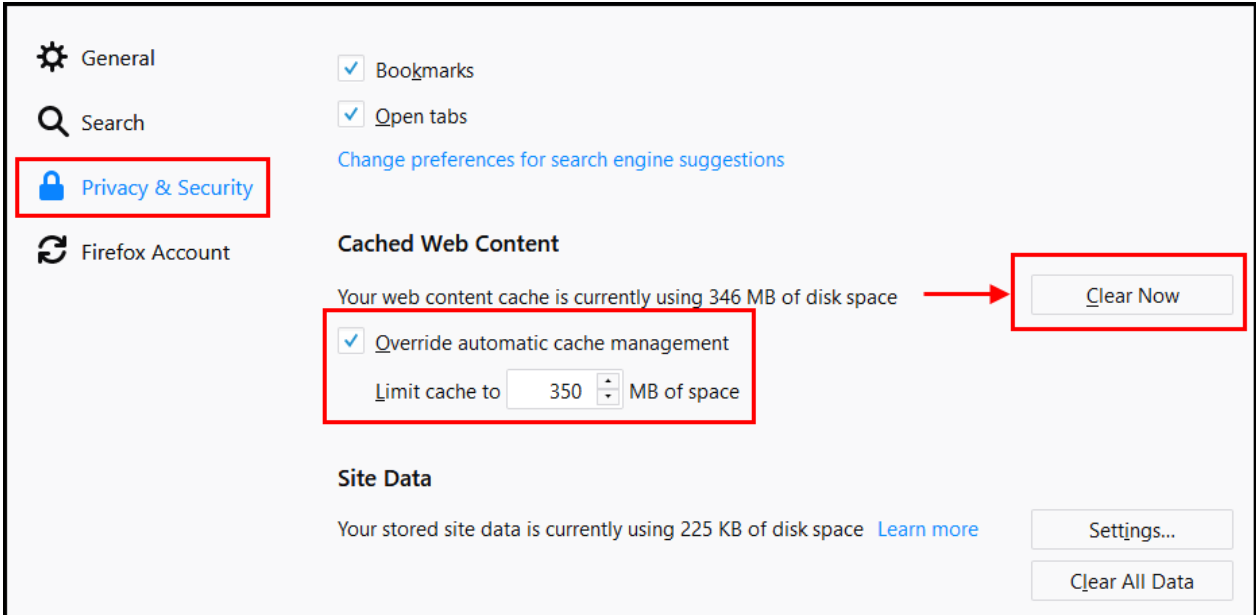


Image 16: Cache Management Settings (Firefox for Windows)

1. Click the **Clear Now** button to clear the network cache.
2. Mark the **Override automatic cache management** checkbox and set the cache limit accordingly.

Download Settings (Mozilla)

In the Downloads section of the General area:

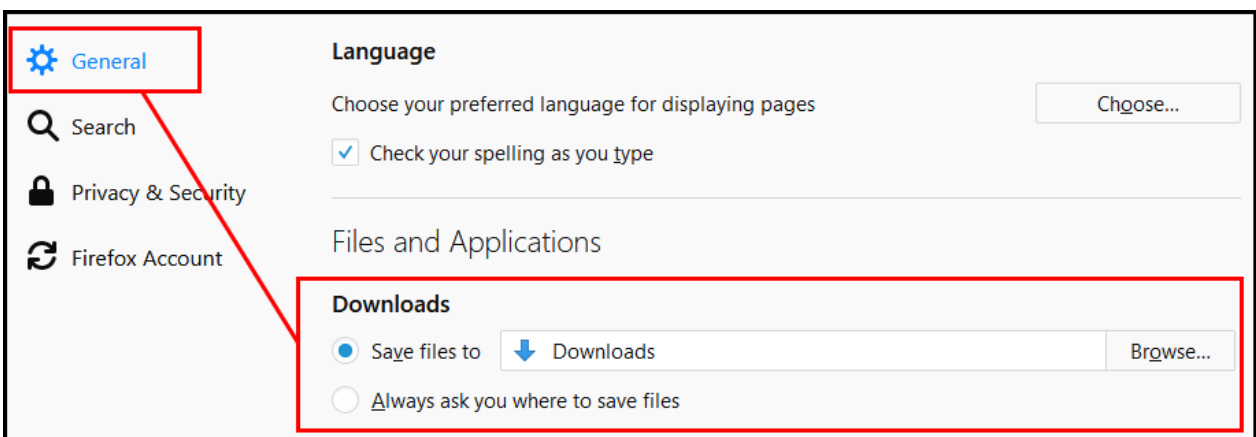


Image 17: Download Location

1. Select the **Save Files to** radio button.

2. Click the **Browse...** button and designate where downloads should be saved.

Mozilla Firefox Settings (Mac)

For the most recent browser versions that are supported in Campus, see the [Supported Platforms](#) article.

- [Content Settings \(Mozilla Mac\)](#)
- [Advanced Network Settings \(Mozilla Mac\)](#)
- [Privacy Settings \(Mozilla Mac\)](#)
- [Security Settings \(Mozilla Mac\)](#)

The names and locations of settings may vary slightly across versions.

To protect security, the following browser options should be configured. To access browser settings, navigate to the Firefox menu and select the **Preferences** option:

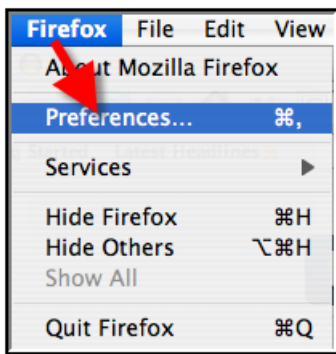


Image 18: Tools Menu (Firefox for Mac)

Content Settings (Mozilla Mac)

On the Content tab:

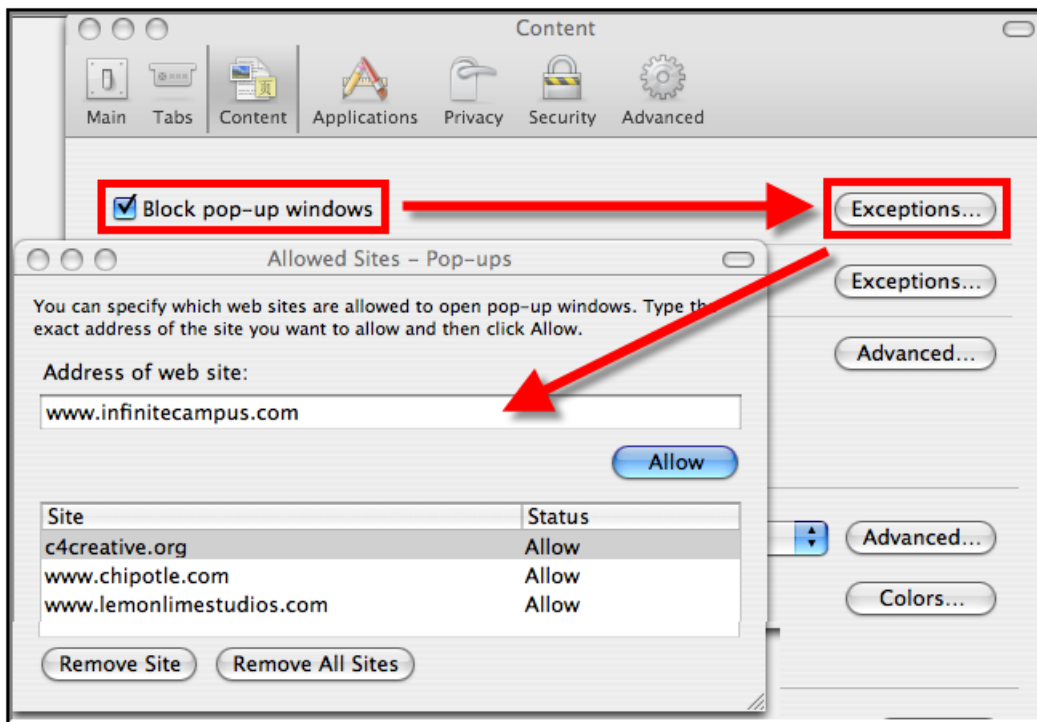


Image 19: Content Settings for Pop-ups (Firefox for Mac)

Pop-up windows must be allowed on the Infinite Campus site in one of the following manners:

- Either the **Block Pop-Up Windows** checkbox is left unmarked, **OR**
- The **Block Pop-Up Windows** checkbox is marked, but the Infinite Campus site is on the Allowed Sites list:
 - Click the **Exceptions** button.
 - Enter the Infinite Campus site URL in the **Address of Web site** field.
 - Click **Allow**.
 - Exit the window.

Advanced Network Settings (Mozilla Mac)

On the Advanced tab:

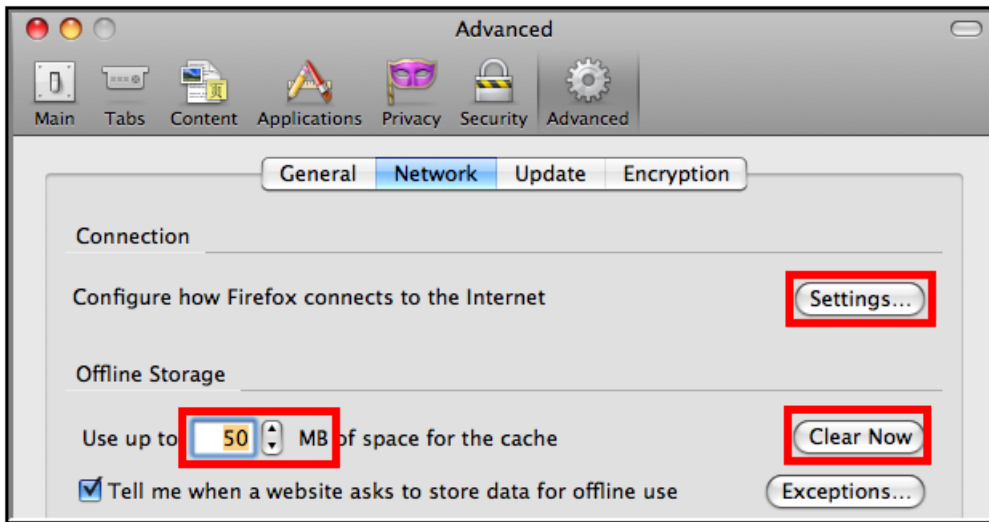


Image 20: Advanced Network Settings for Connection and Storage (Firefox for Mac)

1. Verify that the network Connection **Settings** reflect proper district/state setup.

This setting is largely dependent on the district/state's specific network configuration.

2. Click the **Clear Now** button to clear the network cache.
3. Set the cached **MB** limit to a low number (e.g., 50 or less).

Privacy Settings (Mozilla Mac)

On the Privacy tab:

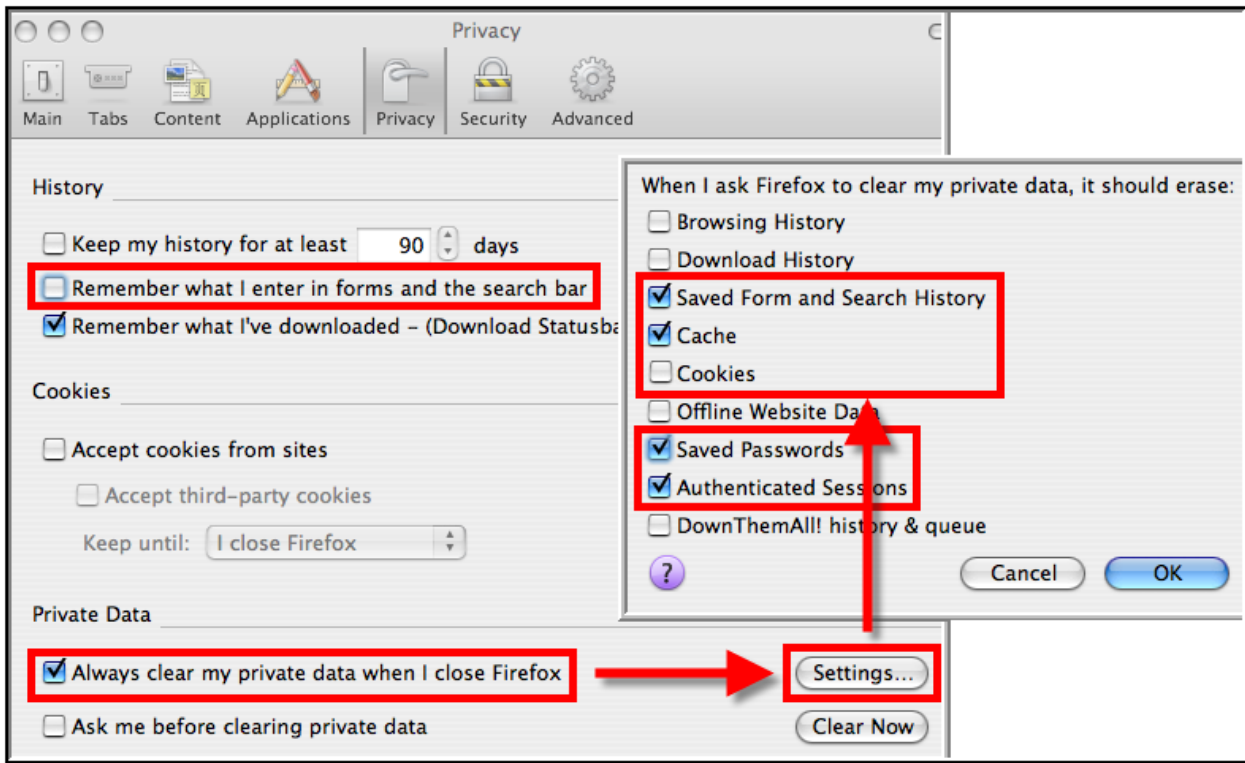


Image 21: Privacy Settings for History and Private Data (Firefox for Mac)

1. Set the Private Data settings to **Always Clear Private Data** on browser close.
2. Click **Settings**.
3. Mark at least the **Cache**, **Saved Firefox** and **Authenticated Sessions** checkboxes.

Deleting cookies will cause the device to no longer be recognized by Campus and will require you to go through the [login security process](#) the next time you log into Campus.

4. Click **OK**.

Click the **Clear Now** button at any time.

Security Settings (Mozilla Mac)

On the Security Tab:

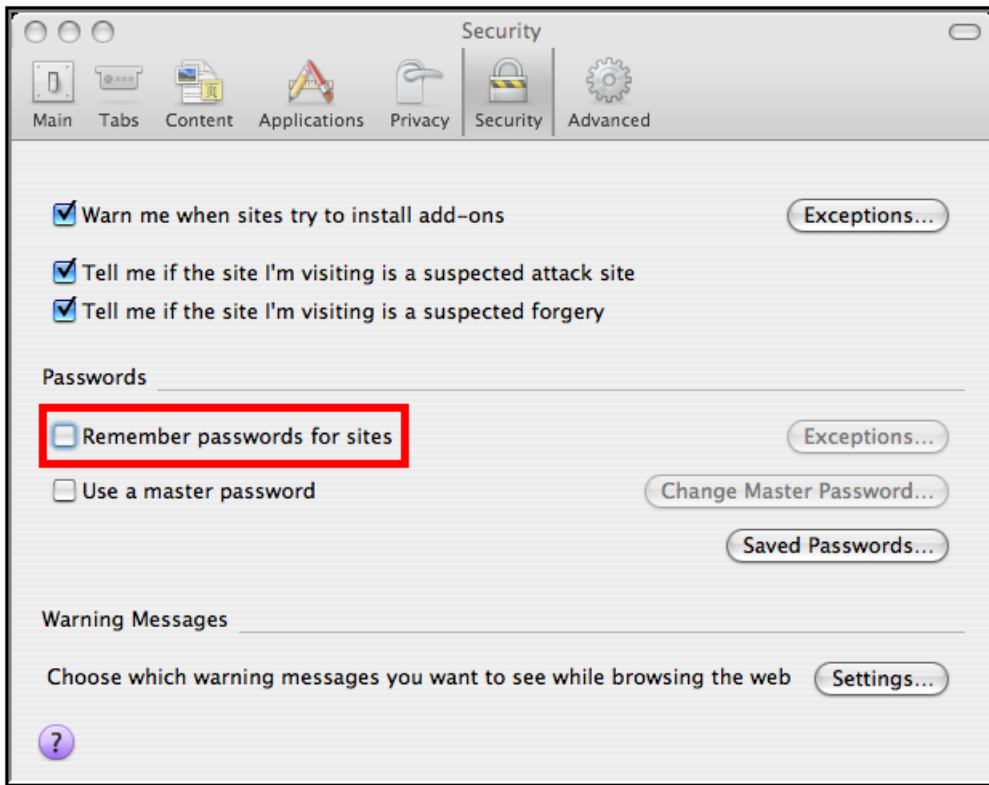


Image 22: Security Settings for Passwords (Firefox for Mac)

- Remove checkmark from the **Remember Passwords for Sites** checkbox, **OR**,
- If passwords should be remembered, mark the **Remember Passwords For Sites** checkbox but verify that Infinite Campus sites are on the **Exception** list:
 - Click **Exceptions**.
 - Check for Infinite Campus sites on the Exceptions window. If Infinite Campus sites do not appear:
 - Close the Exceptions window.
 - Click the **Saved Passwords** button to see if the usernames/passwords have already been stored.
 - **Remove** saved usernames/passwords for Infinite Campus sites.
 - Close the Saved Passwords window.

Edge Settings

For the most recent browser versions that are supported in Campus, see the [Supported Platforms](#) article.

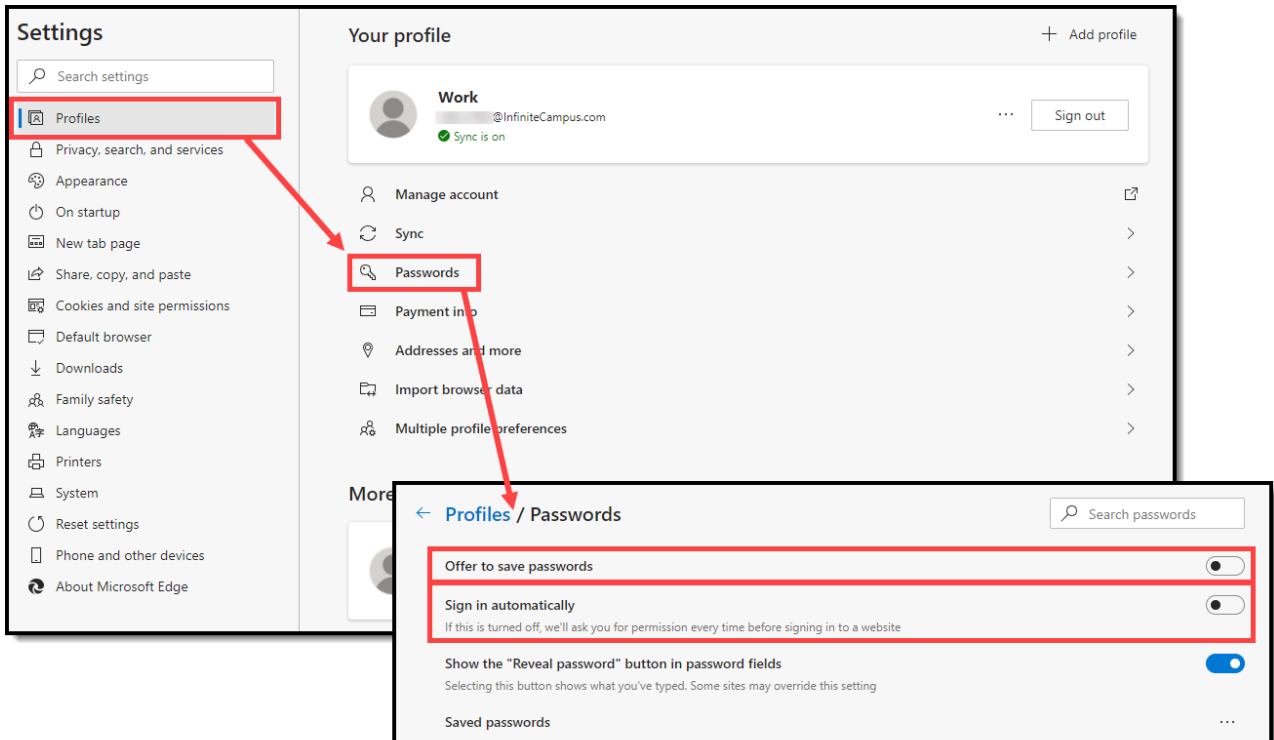
- [Password Settings \(Edge\)](#)
- [Download Settings \(Edge\)](#)
- [Pop-Up Settings \(Edge\)](#)
- [Clear Browsing Data \(Edge\)](#)

Accessing Campus within InPrivate browsing mode may cause problems/errors.

Please do not access Campus using this option.

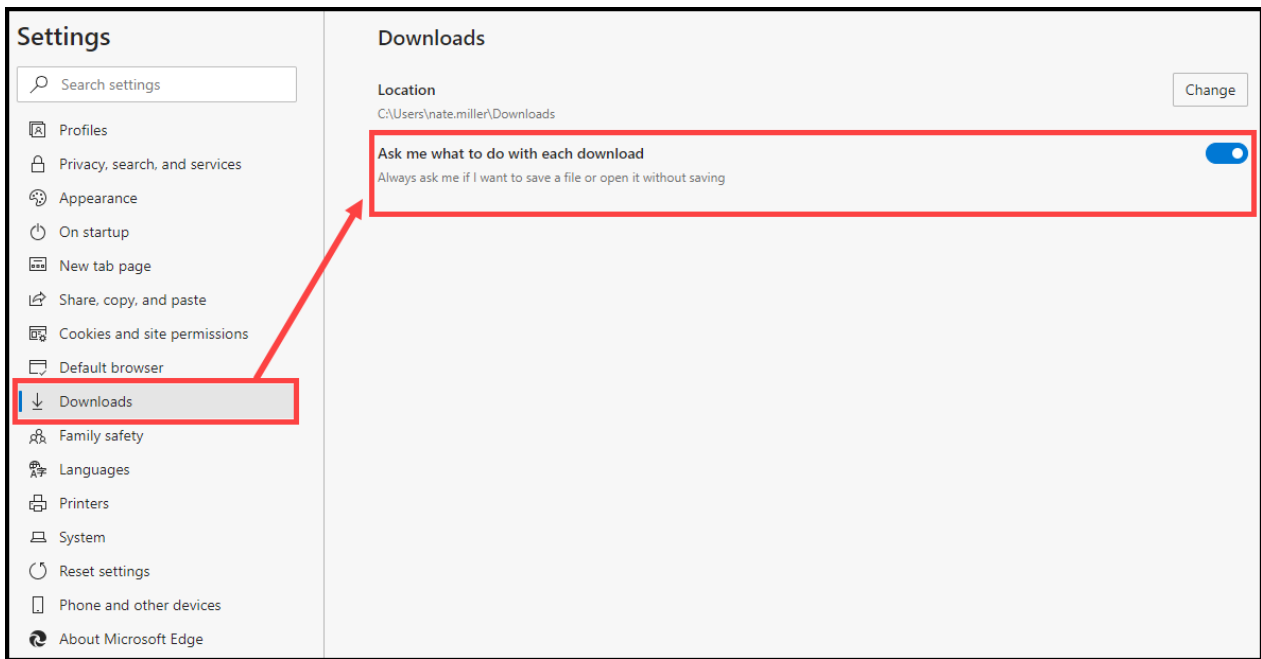
Password Settings (Edge)

Users should turn off password saving and automatic sign-in functionality to ensure any unauthorized users physically accessing a staff member's computer are unable to log themselves into Infinite Campus.



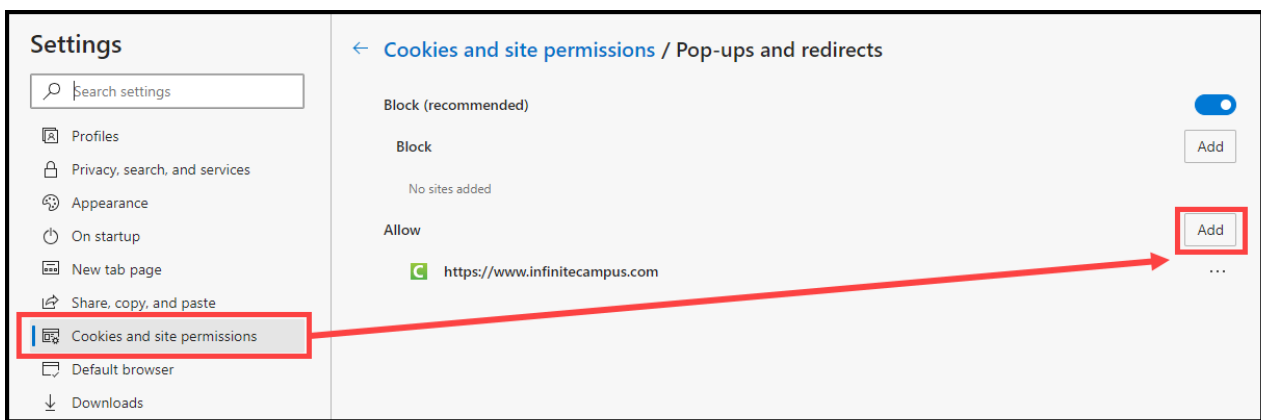
Download Settings (Edge)

You should toggle on the **Ask me what to do with each download** preference to ensure you are actively selecting the appropriate file location each time a file is downloaded.



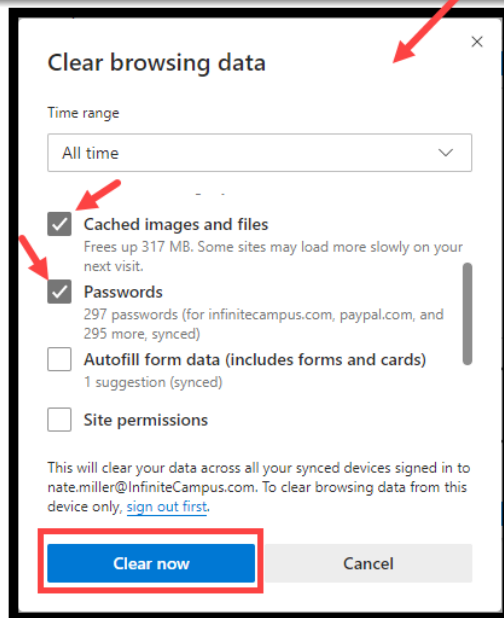
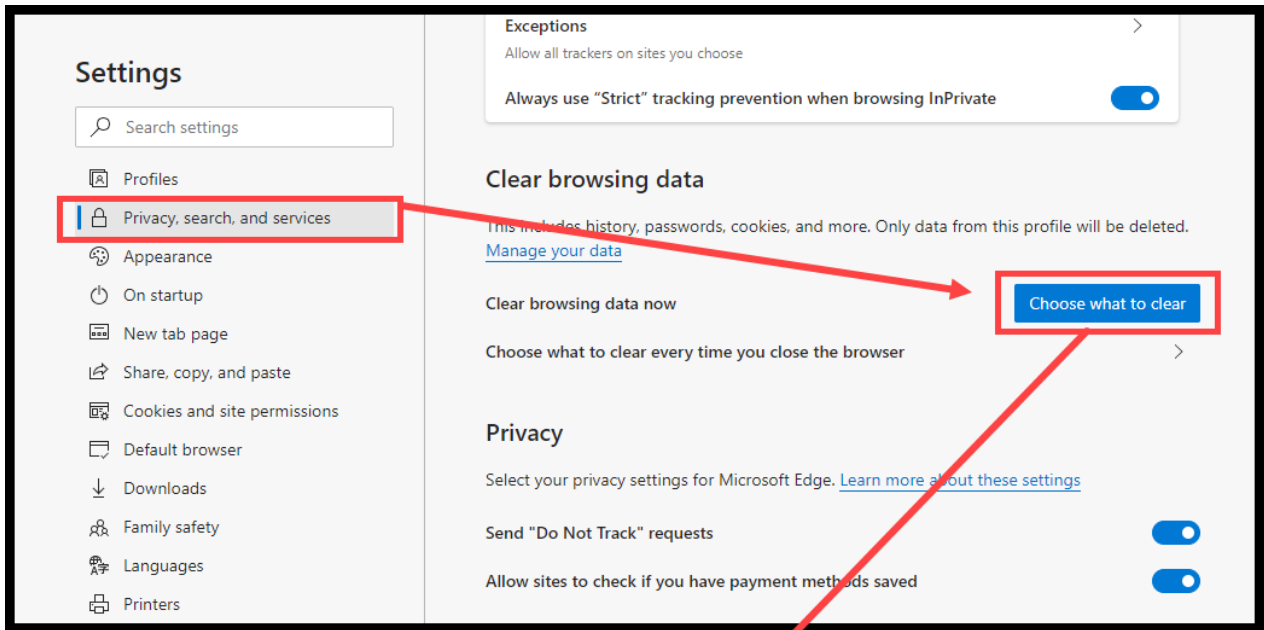
Pop-Up Settings (Edge)

Add Infinite Campus as an allowed source for Pop-ups and redirects to ensure functionality is not impacted.



Clear Browsing Data (Edge)

Periodically, Infinite Campus recommends users delete cached images and files and passwords for improved performance and heightened security.



Safari Settings (Mac)

For the most recent browser versions that are supported in Campus, see the [Supported Platforms](#) article.

- [Security Settings \(Safari\)](#)

The names and locations of settings may vary slightly across versions.

Accessing Campus within Private Browsing mode may cause problems/errors. Please do not access Campus using this option.

Security Settings (Safari)

On the Safari menu (shown in *Image 19*), select the **Preferences** option. On the AutoFill tab, remove the checkmark from the auto-filling **User names and password** checkbox (see *Image 23*).

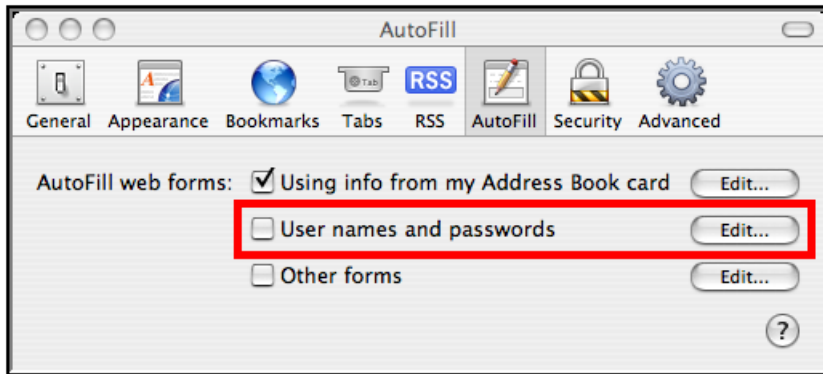


Image 23: Preference Settings for AutoFill (Safari)

Chrome Settings (PC)

For the most recent browser versions that are supported in Campus, see the [Supported Platforms](#) article.

- [Download Settings \(Chrome\)](#)
- [Privacy Settings \(Chrome\)](#)
- [Content Settings \(Chrome\)](#)
- [Clearing the Browser History \(Chrome\)](#)

To access the browser settings, select the three dots button in the upper right-hand corner of the browser window and select **Settings** (see image below).

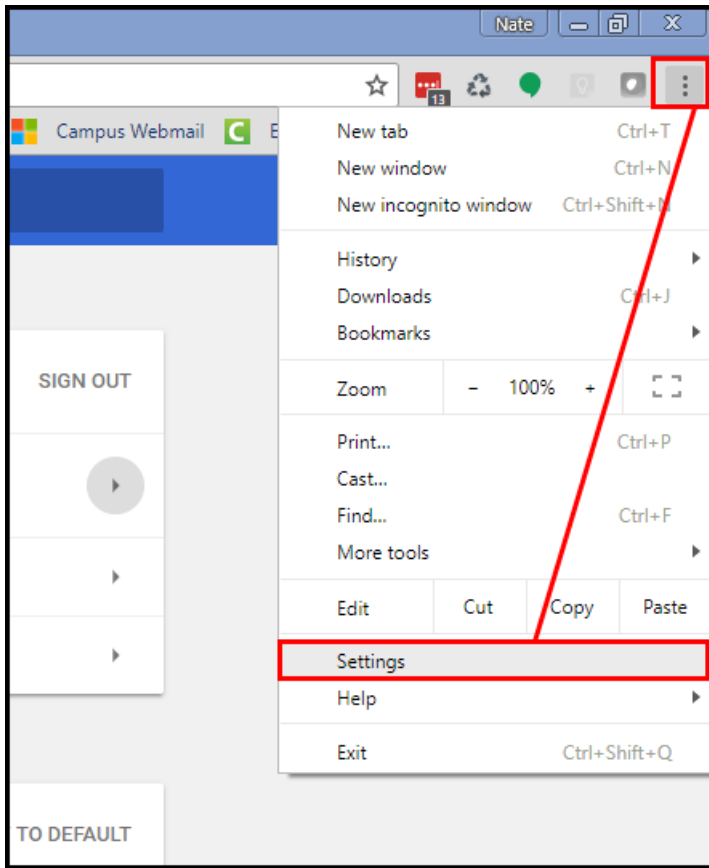


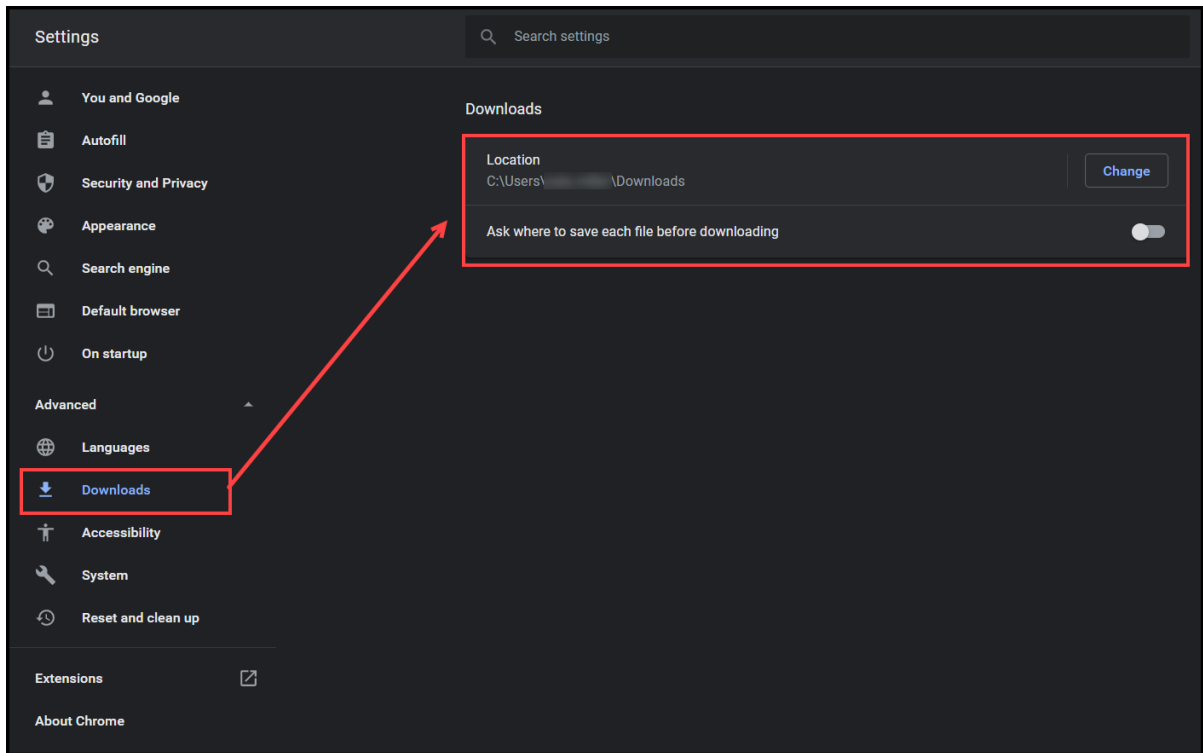
Image 24: Chrome Settings Menu

The following settings are recommended:

Download Settings (Chrome)

You should specify where files downloaded using Chrome should be saved on your computer.

1. Select the three lines button in the upper right-hand corner of the browser window and click **Settings**.
2. On the right-hand side of the screen, expand the **Advanced** section and select **Downloads**.



3. Update the Download options accordingly:

- To change the default location for downloaded files, click the **Change** button and select where files should be stored.
- To have Chrome prompt you to select a location each time a file is downloaded, toggle the **Ask where to save each file before downloading** button.

Privacy Settings (Chrome)

Privacy settings should be reviewed to ensure they meet your district's policies and requirements.

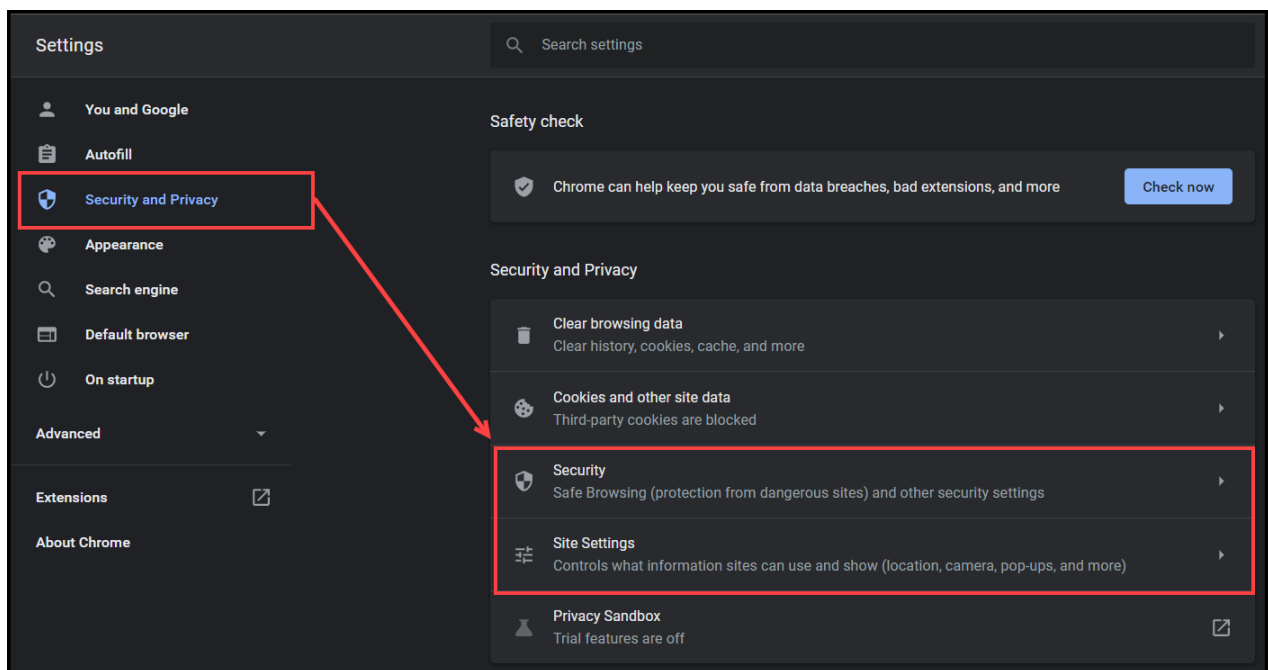


Image 25: Accessing Privacy Settings

1. Select the three lines button in the upper right-hand corner of the browser window and then click **Settings**.
2. Select **Security and Privacy**.
3. Select **Security**, review the options, and set these options according to your district's security policies.
4. Select **Site Settings**, review the options, and set these options according to your district's security policies.

Content Settings (Chrome)

You should adjust the browser's pop-up blocker to exclude Campus pop-up windows.

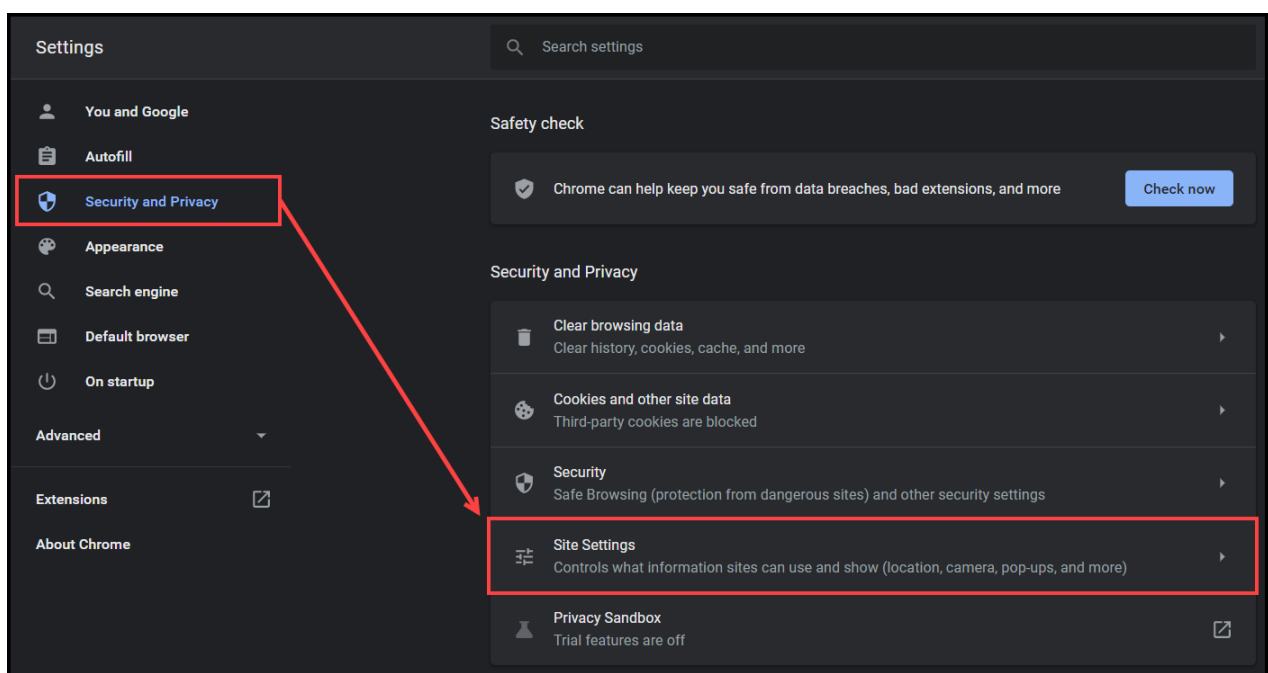
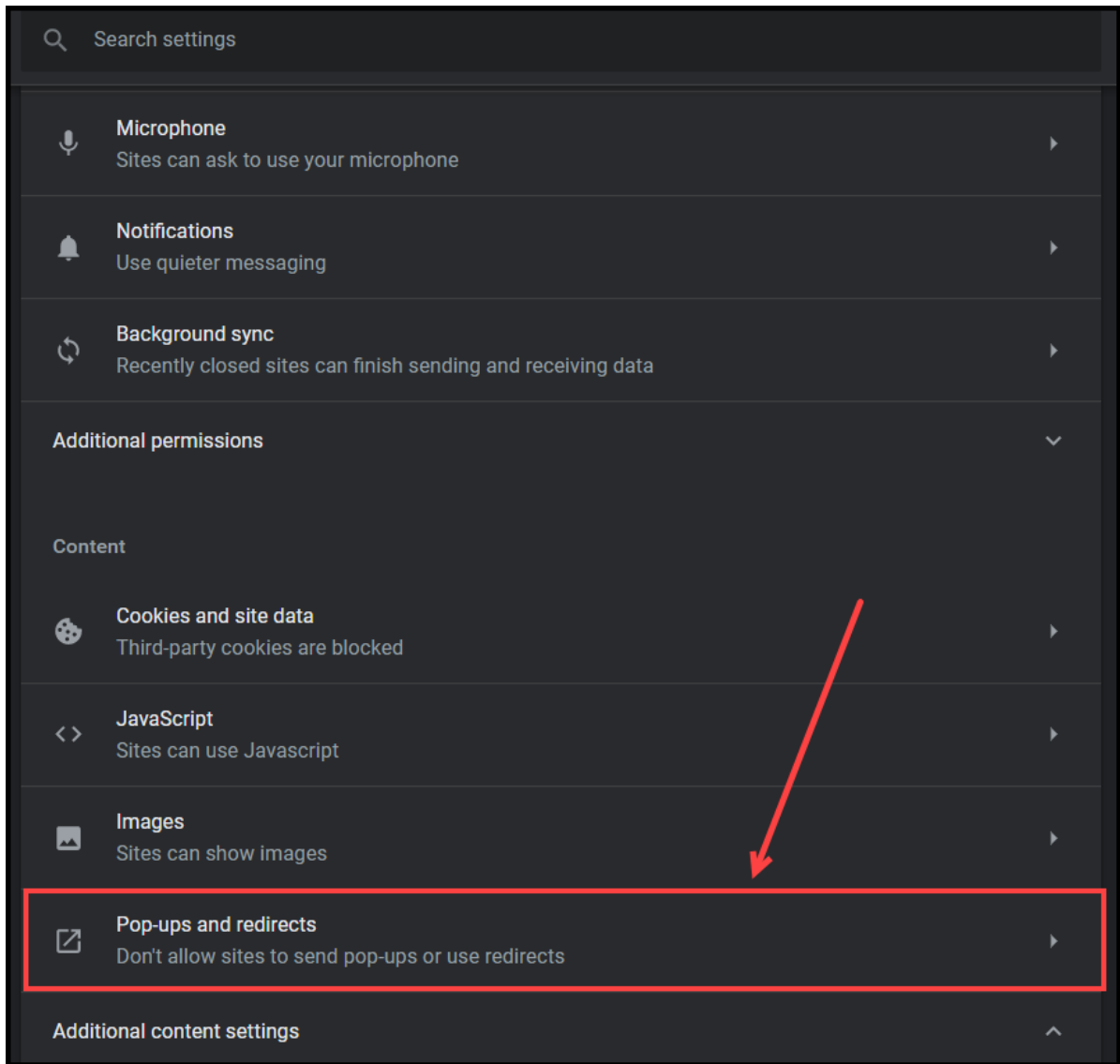
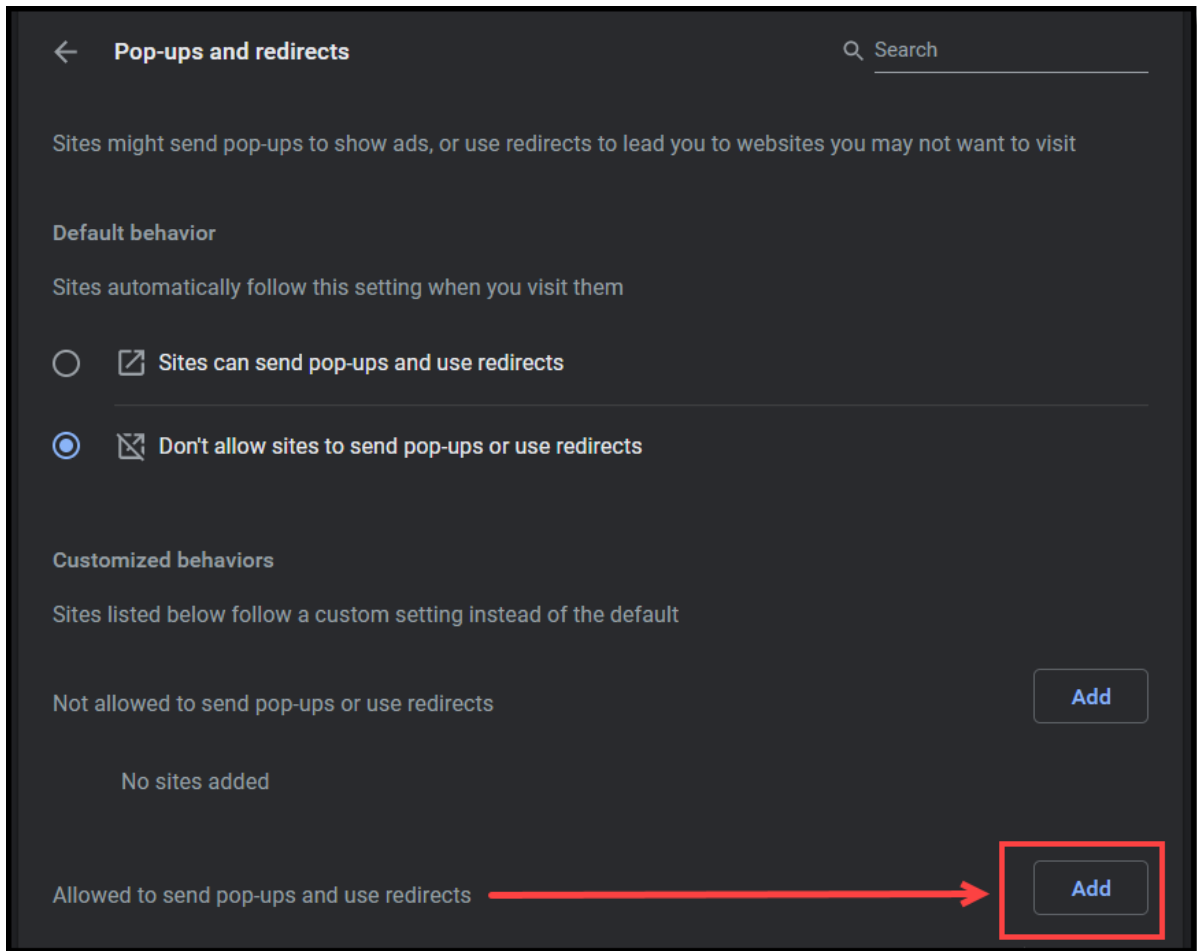


Image 26: Modifying the Pop-up Blocker

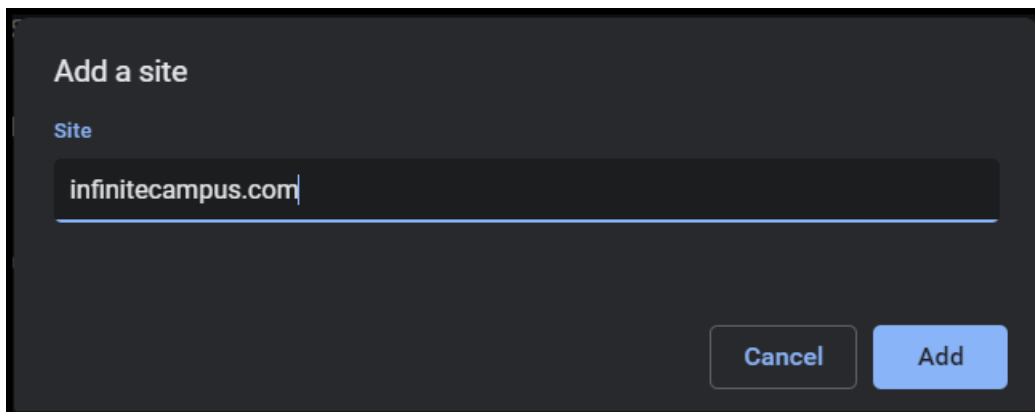
1. Select the three dots button in the upper right-hand corner of the browser window.
2. Select **Settings**.
3. Select **Security and Privacy**.
4. Select **Site Settings**.
5. Scroll down and select **Pop-ups and redirects**.



6. Click the **Add** button for the Allowed to send pop-ups and use redirects (see image below)



7. Enter the URL of the Campus application in the **Site** field and click the **Add** button (see image below).



Clearing the Browser History (Chrome)

It is good practice to clear your browsing history on a regular basis.

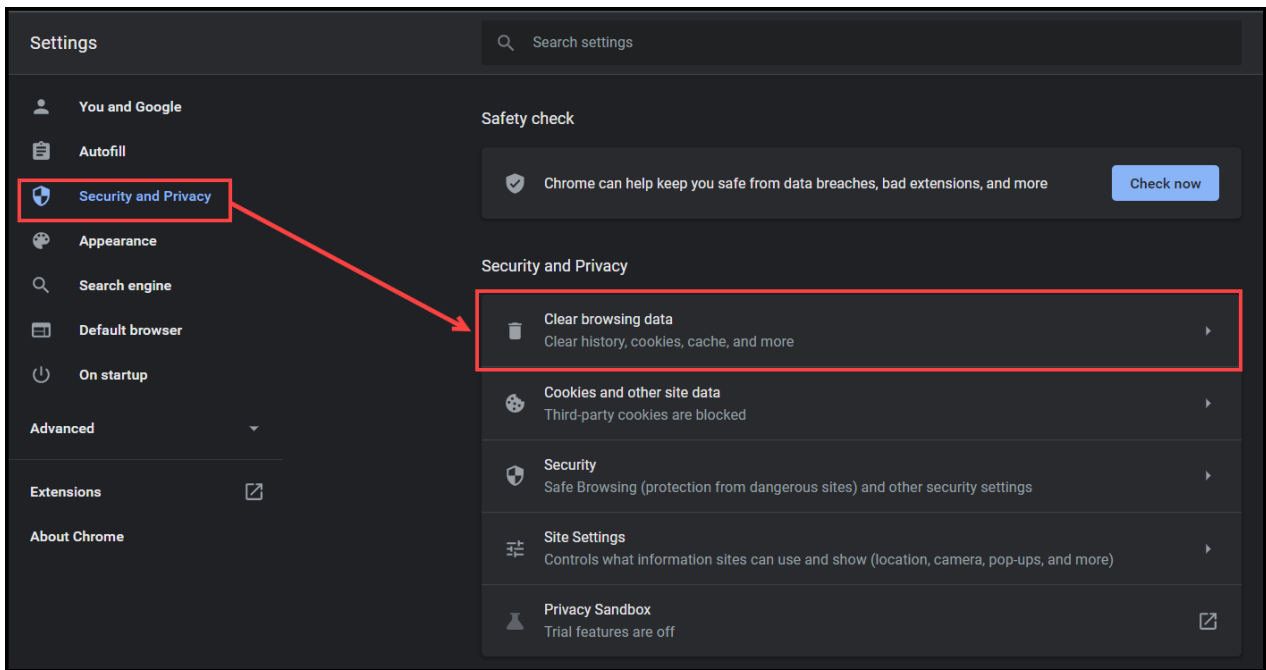


Image 27: Clearing Browsing History

1. Select the three dots button in the upper right-hand corner of the browser window.
2. Select **Settings**.
3. Select **Security and Privacy**.
4. Select **Clear browsing data**.
5. Select a **Time range** of 'All time' to clear your entire browsing history.
6. Leave the **Browsing history**, **Cookies and other site data** , and **Cached images and files** checkboxes marked.

Deleting cookies will cause the device to no longer be recognized by Campus and will require you to go through the [login security process](#) the next time you log into Campus.

7. Click the **Clear Data** button.

