

School Discipline and Attendance - Firearm (GFSA) Discipline (Colorado) [.2144 - .2223]

Last Modified on 10/22/2022 10:50 am CDT

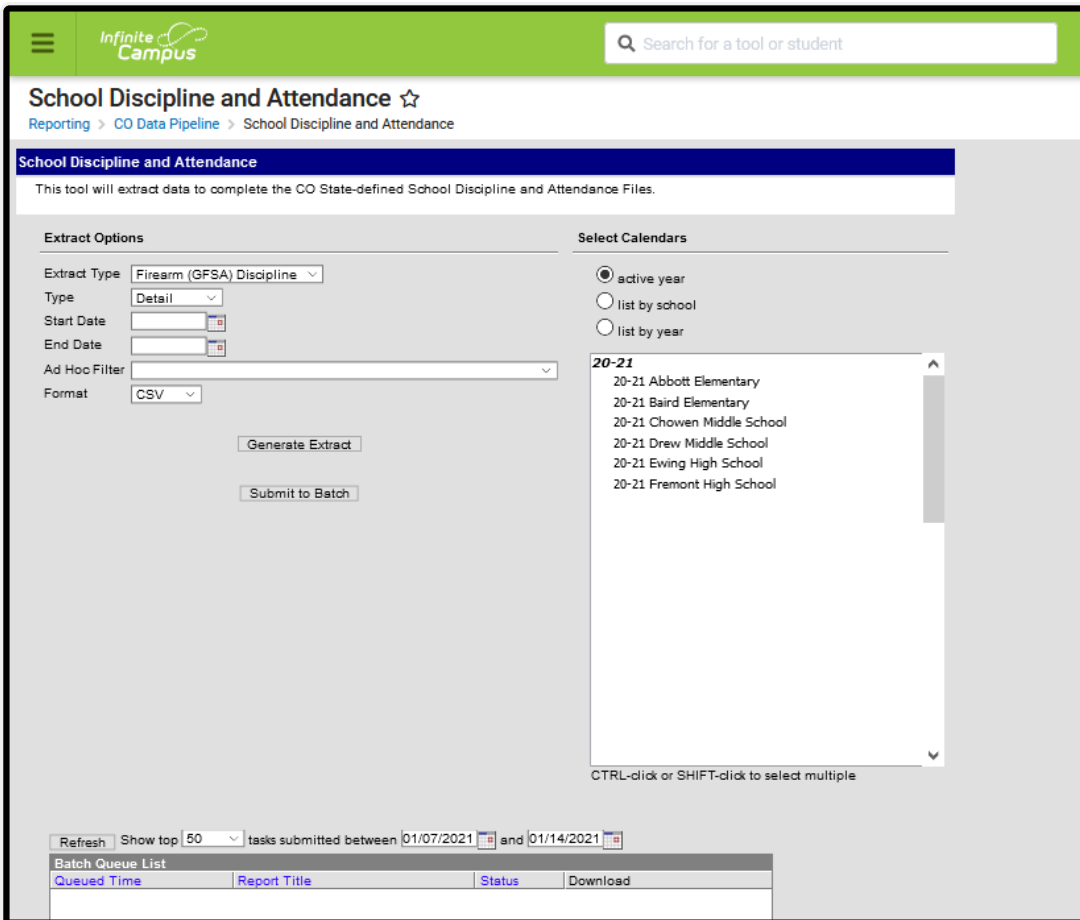
You are viewing a previous version of this article. See [School Discipline and Attendance - Firearm \(GFSA\) Discipline \(Colorado\)](#) for the most current information.

[Report Logic](#) | [Report Editor](#) | [Generate the Report](#) | [Report Layout](#)

Classic View: CO State Reporting > Data Pipeline > School Discipline and Attendance > Firearm (GFSA) Discipline

Search Terms: School Discipline and Attendance

The Firearm (GFSA) Discipline file reports students involved in behavior events who have a Behavior Event State Code of 05: Dangerous Weapon. A record reports for each type of firearm - 01: Handgun, 02: Rifle/Shotgun, 03: Other Firearms, 04: Multiple Firearms - and has a resolution (where appropriate) of 00, 04, 05, 07, 08-11.



Firearm (GFSA) Discipline

Report Logic

A record reports for all students enrolled in the selected calendar who meet the following:

- Enrollment Service Type is Primary (P), Partial (S) or Special Ed Services (N).
- Grade level of enrollment is 002, 004, 006, 007, 010, 020, 030, 040, 050, 060, 070, 080, 090, 100, 110, 120
- The student has a Behavior Event with a State Code of 05: Dangerous Weapon.
- A record reports for each type of firearm (01: Handgun, 02: Rifle/Shotgun, 03: Other Firearms).
- The student has a Behavior Resolution to the Behavior Event of 00, 04, 05, 07, 08-11.

A record and appropriate count reports for each individual student who has an applicable behavior incident where at least one day falls within the reporting period. Students may have more than one record (possibility of 6 total records per students).

If more than one student is tied to an incident, each student reports. See the previous information for rules on reporting multiple event per student.

State Exclude logic is enforced. Students are not reported, even if they meet the above requirements when:

- The Enrollment is marked as State Exclude or No Show
- The Grade level of enrollment is marked as State Exclude
- The selected Calendar is marked as State Exclude.

Report Editor

Data Element	Description
Extract Type	Selection indicates what file generates. For this report, select Firearm (GFSA) .
Type	Indicates whether a Summary report generates or a Detail report generates.
Start Date	Indicates the start date by which to report behavior events. At least one day of the Behavior Incident must fall within or on the start and end date. Dates are entered in <i>mmddyy</i> format or use the calendar icon to select a date.
End Date	Indicates the end date by which to report behavior events. At least one day of the Behavior Incident must fall within or on the start and end date. Dates are entered in <i>mmddyy</i> format or use the calendar icon to select a date.
Ad hoc Filter	When chosen, only those students included in the selected ad hoc filter are reported in the extract, if they meet the requirements of the extract.
Format	Determines the layout of the report. Choose either CSV or HTML.

Data Element	Description
Calendar Selection	Select at least one calendar from which to report student discipline information.
Report Generation	Use the Generate Extract button to display the results of the extract immediately. If there is a larger data set being reported, use the Submit to Batch option to choose when the extract generates (after or before school hours, etc.). See the Batch Queue article for more information.

Generate the Report

1. Select the **Firearm (GFSA) Discipline Extract Type**.
2. Select either the **Summary Report Type** or the **Detail Report Type**.
3. Enter a **Start Date** and **End Date**.
4. If desired, select an *Ad hoc Filter*.
5. Select the desired **Format**, either CSV or HTML, from the dropdown list.
6. Select at least one **Calendar** from which to report discipline records. Calendars can be chosen by active year, by school name or by year.
7. Click the **Generate Extract** button or the **Submit to Batch** button. The report displays in the selected format.

	A	B	C	D	E	F	G	H	I	J	K	L	M	N	O
1	District Cc	School Co	Grade Lev	Firearm W	IDEA/Spe	Brought o	Students	Students	Students	Students	Students	Students	Students	Students	Students
2	140	5224	110	1	0	1	1	1	0	0	0	0	0	0	0
3	140	5224	120	3	0	1	1	1	0	0	0	0	0	0	0
4															
5															

Firearm (GFSA) Discipline Report - CSV Format

Safety and Discipline Indicators - Firearm (GFSA) Discipline Records:2									
District Code	School Code	Grade Level	Firearm Weapons	IDEA/Special Education	Brought or Possessed at School	Students Expelled	Students Expelled Less Than One Year	Students Referred and Expelled Less Than One Year	Students Exp- Least One
0140	0298	090	02	0	02	01	01	00	00
0140	0298	120	01	0	03	01	01	00	00

Firearm (GFSA) Discipline Report - HTML Format

Report Layout

Data Element	Description	Location
District Code	Reports the number assigned to a school district by the state department of education. <i>Numeric, 4 digits</i>	System Administration > Resources > District Information > District Information > State District Number District.number

Data Element	Description	Location
<p>School Code</p>	<p>Reports the number assigned to the school building by the state department of education.</p> <p>When a student has a Special Education Attendance Code of 31: Administrative Unit OR 32: State-Operated Program, the four-digit code reports from the Serving District field on the student's most recent enrollment record as of the entered effective date, the end date of report generation, or the most recent enrollment closest to the end date of report generation.</p> <p>For all other students, the student's latest enrollment where the Special Education Start Date is populated and at least one active Special Education date falls within the reporting period or the most recent enrollment closest to the end date of report generation.</p> <ul style="list-style-type: none"> • The Service Agency/Facility code reports, if populated. • If the Service Agency/Facility Code field is not populated, the School of Accountability reports, if populated. • If the School of Accountability field is not populated, the School Number of the student's most current enrollment or most recent enrollment as of the Effective Date or End Date of report generation. • If all of these fields are not populated, a value of 0000 reports. <p><i>Numeric, 4 digits</i></p>	<p>Student Information > General > Enrollments > State Reporting Fields > Serving District</p> <p>Enrollment.serviceDistrict</p> <hr/> <p>Student Information > General > Enrollments > Special Education Fields > Service Agency/Facility Code</p> <p>Enrollment.serviceFacility</p> <hr/> <p>Student Information > General > Enrollments > State Reporting Fields > School of Accountability</p> <p>Enrollment.residentSchool</p> <hr/> <p>System Administration > Resources > School > School Editor > State School Number</p> <p>School.number</p>

Data Element	Description	Location
Grade Level	Reports the student's grade level for the action report. <i>Numeric, 3 digits</i>	Student Information > General > Enrollments > General Enrollment Information > Grade Enrollment.grade
Firearm Weapons	Reports the weapon associated with the event. <ul style="list-style-type: none"> • Reports 01 when the Event Code is 05: Dangerous Weapons and the GSFA is 01: Handgun. • Reports 02 when the Event Code is 05: Dangerous Weapons and the GSFA is 02: Rifle/Shotgun. • Reports 03 when the Event Code is 05: Dangerous Weapons and the GSFA is 03: Other Firearms. • Reports 04 when the Event Code is 05: Dangerous Weapons and the GSFA is 01: Handgun, 02: Rifle/Shotgun, or 03: Other Firearms (multiple firearms). <i>Numeric, 2 digits</i>	Behavior > Behavior Event > GFSA Weapon BehaviorEvent.weaponCode

Data Element	Description	Location
IDEA/Special Education	<p>Reports a value when the student is considered a Special Education student.</p> <p>A value of 1 reports when:</p> <ul style="list-style-type: none"> • The Behavior Incident Date falls within the Special Education Start and Exit Dates. • The student has an active locked IEP at the time of the incident. <p>Otherwise, reports a value of 0.</p> <p><i>Numeric, 1 digit</i></p>	<p>Student Information > Special Education > Documents > IEP</p> <hr/> <p>Student Information > General > Enrollments > Special Ed Fields > Special Ed Start Date, Special Ed Exit Date</p> <p>Enrollment.specialEdStartDate Enrollment.specialEdExitDate</p> <hr/> <p>Behavior > Behavior > Management > Date of Incident</p> <p>BehaviorEvent.date</p> <hr/> <p>Behavior > Behavior < Management > Resolution Start Date</p> <p>BehaviorResolution.startDate</p>
Brought or Possessed at School	<p>Reports the number of students who brought or possessed a firearm while at school (Behavior Event has an Incident Type = 05: Dangerous Weapons).</p> <p>Otherwise, a value of 0 reports.</p> <p><i>Numeric, 2 digits</i></p>	<p>Behavior > Behavior Management > Resolution</p>

Data Element	Description	Location
<p>Students Expelled</p>	<p>Reports the number of students who were expelled for bringing or possessing firearms to school.</p> <p>Report a value of 1 when:</p> <ul style="list-style-type: none"> • Incident Type is 05: Dangerous Weapons AND • Resolution Code is one of the following: <ul style="list-style-type: none"> ◦ 04: Expulsion ◦ 05: Expulsion and Referred to Alternate Program ◦ 08: Expulsion and Referred to Alternate Program by Hearing Officer ◦ 11: Unilateral Removal by School Personnel <p>Otherwise, reports a value of 0.</p> <p><i>Numeric, 2 digits</i></p>	<p>Behavior > Behavior Management > Event Type > 05: Dangerous Weapons</p> <p>Behavior > Behavior Management > Resolution</p>

Data Element	Description	Location
<p>Students Expelled Less Than One Year</p>	<p>Reports the number of students who were expelled for less than the mandatory one calendar year term.</p> <p>Length of time is determined by the timestamp start date on the Behavior Resolution record and the End Date. If the length of expulsion is less than 364 days, the student is counted.</p> <p>Reports a value of 1 when:</p> <ul style="list-style-type: none"> • Incident Type is 05: Dangerous Weapons AND • Resolution Code is one of the following: <ul style="list-style-type: none"> ◦ 04: Expulsion ◦ 05: Expulsion and Referred to Alternate Program ◦ 08: Expulsion and Referred to Alternate Program by Hearing Officer ◦ 11: Unilateral Removal by School Personnel <p>Otherwise, reports a value of 0.</p> <p><i>Numeric, 2 digits</i></p>	<p>Behavior > Behavior Management > Event Type > 05: Dangerous Weapons</p> <p>Behavior > Behavior Management > Resolution > 04, 05, 08, 11</p>

Data Element	Description	Location
<p>Students Referred and Expelled Less Than One Year</p>	<p>Reports the number of students expelled for less than the mandatory one calendar year that resulted in a referral to an alternative school or program.</p> <p>Length of time is determined by the timestamp start date on the Behavior Resolution record and the End Date. If the length of expulsion is less than 364 days, the student is counted.</p> <p>Reports a value of 1 when:</p> <ul style="list-style-type: none"> • Incident Type is 05: Dangerous Weapons AND • Resolution Code is 05: Expulsion and Referred to Alternate Program AND • Student was expelled less than one year. <p>Otherwise, reports a value of 0.</p> <p><i>Numeric, 2 digits</i></p>	<p>Behavior > Behavior Management > Event Type > 05: Dangerous Weapons</p> <p>Behavior > Behavior Management > Resolution</p>
<p>Students Expelled at Least One Year</p>	<p>Reports the number of students expelled for at least the mandatory one calendar year.</p> <p>Length of time is determined by the timestamp start date on the Behavior Resolution record and the End Date. If the length of expulsion is less than 364 days, the student is counted.</p> <p>Reports a value of 1 when:</p> <ul style="list-style-type: none"> • Incident Type is 05: Dangerous Weapons AND • Resolution Code is 05: Expulsion and Referred to Alternate Program AND • Student was expelled for one year or more. <p>Otherwise, reports a value of 0.</p> <p><i>Numeric, 2 digits</i></p>	<p>Behavior > Behavior Management > Event Type > 05: Dangerous Weapons</p> <p>Behavior > Behavior Management > Resolution > 05</p>

Data Element	Description	Location
<p>Students Referred and Expelled At Least One Year</p>	<p>Reports the number of students expelled for the mandatory one calendar year that resulted in a referral to an alternative school or program.</p> <p>Length of time is determined by the timestamp start date on the Behavior Resolution record and the End Date. If the length of expulsion is equal to or more than 364 days, the student is counted.</p> <p>Reports a value of 1 when:</p> <ul style="list-style-type: none"> • Incident Type is 05: Dangerous Weapons AND • Resolution Code is 05: Expulsion and Referred to Alternate Program AND • Student was expelled for one year or more. <p>Otherwise, reports a value of 0.</p> <p><i>Numeric, 2 digits</i></p>	<p>Behavior > Behavior Management > Event Type > 05: Dangerous Weapons</p> <p>Behavior > Behavior Management > Resolution > 05</p>
<p>Students Not Disciplined</p>	<p>Reports the number of students who were not disciplined for firearms brought or possessed at school.</p> <p>Reports a value of 1 when:</p> <ul style="list-style-type: none"> • Incident Type is 05: Dangerous Weapons AND • Resolution Code is 00: Not Applicable or 10: No Action Taken <p>Otherwise, reports a value of 0.</p> <p><i>Numeric, 2 digits</i></p>	<p>Behavior > Behavior Management > Event Type > 05: Dangerous Weapons</p> <p>Behavior > Behavior Management > Resolution > 00, 10</p>

Data Element	Description	Location
Students Disciplined Other	<p>Reports the number of students where the resolution to the behavior incident resulted in a disciplinary action other than expulsion (i.e., suspension, classroom removal, etc.) for firearms brought or possessed at school.</p> <p>Reports a value of 1 when:</p> <ul style="list-style-type: none"> • Incident Type is 05: Dangerous Weapons AND • Resolution Code is 01, 02, 03, 06 or 07. <p>Otherwise, reports a value of 0.</p> <p><i>Numeric, 2 digits</i></p>	<p>Behavior > Behavior Management > Event Type > 05: Dangerous Weapons</p> <p>Behavior > Behavior Management > Resolution > 07</p>
Students Removed Other	<p>Reports the number of students that resulted in another type of removal from school not listed above (i.e., death, incarcerated, etc.) for firearms brought or possessed at school.</p> <p>Reports a value of 1 when:</p> <ul style="list-style-type: none"> • Incident Type is 05: Dangerous Weapons AND • Resolution Code is 09: Removal Other, Death, Incarcerated, etc. <p>Otherwise, reports a value of 0.</p> <p><i>Numeric, 2 digits</i></p>	<p>Behavior > Behavior Management > Event Type > 05: Dangerous Weapons</p> <p>Behavior > Behavior Management > Resolution</p>
LASID	<p>Reports the student's local student number.</p> <p><i>Numeric 10 digits</i></p>	<p>Census > People > Demographics > Student Number</p> <p>Person.studentNumber</p>