

Immunization Rules (Minnesota) [.2144 - .2223]

Last Modified on 10/22/2022 10:52 am CDT

You are viewing a previous version of this article. See [Immunization Rules \(Minnesota\)](#) for the most current information.

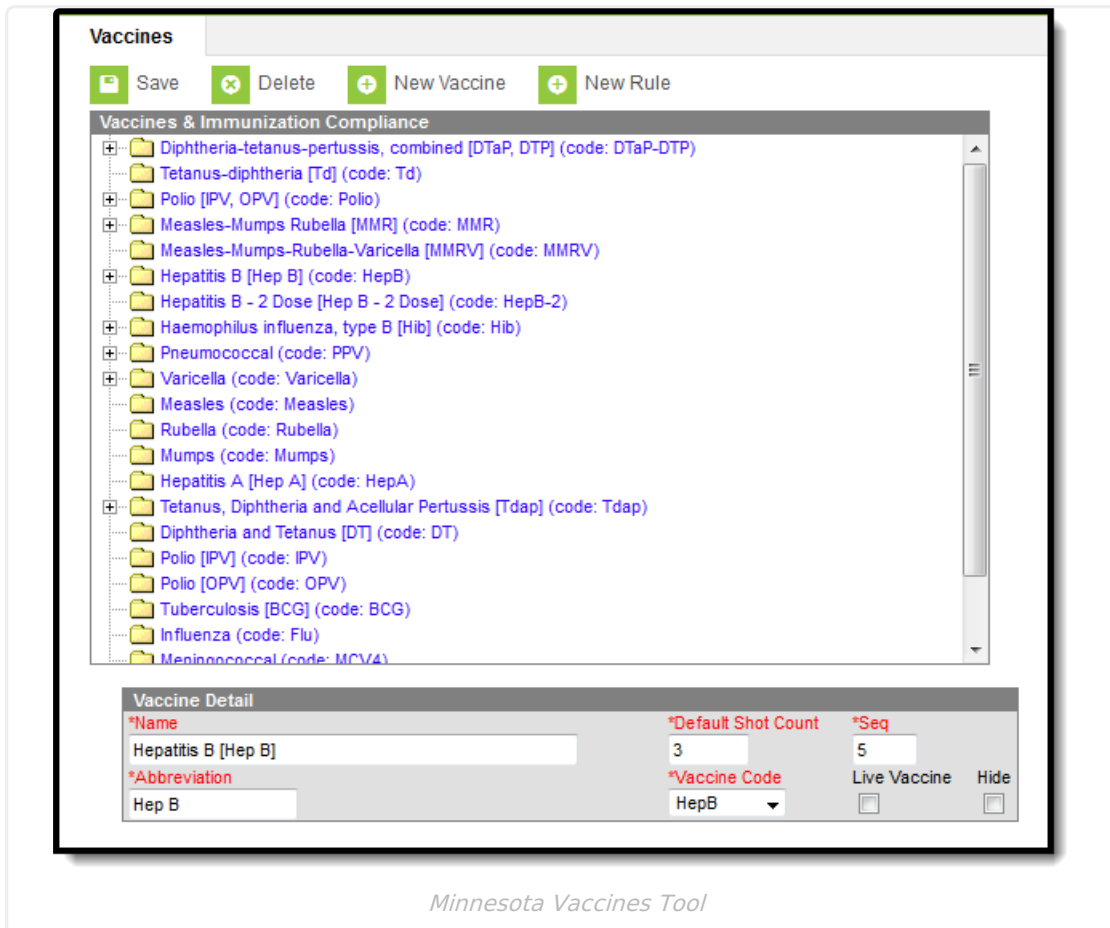
[General Compliance Rules](#) | [Immunization Rules](#) | [Hepatitis B](#) | [DTap](#) | [Tdap](#) | [Polio](#) | [MMR](#) | [Hib](#) | [Varicella](#) | [Meningococcal MCV4](#) | [Hepatitis A](#) | [PPV](#)

Classic Path: [System Administration](#) > [Health](#) > [Vaccines](#)

Search Terms: [Vaccines](#)

Health vaccines and their associated compliance listings are based on state guidelines. While Infinite Campus maintains standard guidelines for all states, districts have the ability to enter additional compliances. The following information describes vaccine compliance rules as defined by the Minnesota State Department of Health.

For more information on the creation, modification or deletion of vaccine compliances, see the [Vaccines](#) page.



Minnesota Vaccines Tool

General Compliance Rules

- There is a 4 day grace period for deadlines of a dose.
- Doses of Varicella and MMR must be given on the same day, or at least 28 days apart.
- The rules for MMR and Varicella are hard-coded for Minnesota districts, meaning that changes cannot be made to the rules for these two vaccines.

Immunization Rules

The following tables describe all Minnesota immunization requirements per vaccine.

Hepatitis B

Students **not yet enrolled** in a grade of PK or higher are not required to be vaccinated.

Requirement	Rule
In Process	Students are considered <i>In Process</i> if they are not compliant and: <ul style="list-style-type: none"> • had their most recent dose within the past 4 weeks or, • have had 2 doses with their most recent dose within the past 8 weeks.

Requirement	Rule
3 doses Compliant	Students enrolled in a grade of PK-12 are considered compliant if they have received 3 doses of the Hepatitis B (Hep B) vaccine.
2 dose combo 11 and up Compliant	Students are considered compliant if the following conditions have been met: <ul style="list-style-type: none"> the student receives 2 doses of the Hepatitis B 2 (HepB-2) vaccine, and the student is at least 132 months (11 years) old.
1 dose In Grace Period	Students are in grace period if they receive 1 dose Hepatitis B (Hep B) vaccine and the difference between the last dose and the effective date is less than 28 days, with a 0 (zero) day tolerance.
2 doses In Grace Period	Students are in grace period if they receive 2 doses Hepatitis B (Hep B) vaccine and the difference between the last dose and the effective date is less than 56 days, with a 0 (zero) day tolerance.

DTap

Rule	Requirements
under 3 months	Students under 3 months old are not required to receive any doses of the DTaP vaccine.
under 5 months Compliant	Students are considered compliant if the following conditions have been met: <ul style="list-style-type: none"> student is 4 months old and younger, and the student receives one dose of the DT, DTaP/DTP, Td, or Tdap vaccine.
under 7 months Compliant	Students are considered compliant if the following conditions have been met: <ul style="list-style-type: none"> student is 6 months old and younger, and the student receives two doses of the DT, DTaP/DTP, Td, or Tdap vaccine.
under 19 months Compliant	Students are considered compliant if the following conditions have been met: <ul style="list-style-type: none"> student is 18 months old and younger, and the student receives three doses of the DT, DTaP/DTP, Td, or Tdap vaccine.
under 60 months Compliant	Students are considered compliant if the following conditions have been met: <ul style="list-style-type: none"> student is 59 months old and younger, and the student receives four doses of the DT, DTaP/DTP, Td, or Tdap vaccine.

Rule	Requirements
<p>EC, PK 4 shots <i>Compliant</i></p>	<p>Students are considered compliant if the following conditions have been met:</p> <ul style="list-style-type: none"> • student is in state grade: EC: Early Childhood, PS: Pre-School Screening, EE: Early Education, PA: Pre-Kindergarten Section A, PB: Pre-Kindergarten Section B, PC: Pre-Kindergarten Section C, PD: Pre-Kindergarten Section D, PE: Pre-Kindergarten Section E, PF: Pre-Kindergarten Section F, PG: Pre-Kindergarten Section G, PH: Pre-Kindergarten Section H, PI: Pre-Kindergarten Section I, PJ: Pre-Kindergarten Section J, RA: School Readiness Plus Section A, RB: School Readiness Plus Section B, RC: School Readiness Plus Section C, RD: School Readiness Plus Section D, RE: School Readiness Plus Section E, RF: School Readiness Plus Section F, RG: School Readiness Plus Section G, RH: School Readiness Plus Section H, RI: School Readiness Plus Section I, RJ: School Readiness Plus Section J, and • the student receives four doses of the DT, DTaP/DTP, Td, or Tdap vaccine.
<p>KG, 5 shots <i>Compliant</i></p>	<p>Students are considered compliant if the following conditions have been met:</p> <ul style="list-style-type: none"> • student is in state grade: KC: Kindergarten Section C, KD: Kindergarten Section D, KE: Kindergarten Section E, KF: Kindergarten Section F, KG: Kindergarten Section G, KI: Kindergarten Section I, KJ: Kindergarten Section J, KK: Kindergarten Section K, KL: Kindergarten Section L, KM: Kindergarten Section M, KN: Kindergarten Section N, KO: Kindergarten Section O, KP: Kindergarten Section P, KQ: Kindergarten Section Q, KR: Kindergarten Section R, KS: Kindergarten Section S, KT: Kindergarten Section T, KU: Kindergarten Section U, KV: Kindergarten Section V, KW: Kindergarten Section W, KX: Kindergarten Section X, KY: Kindergarten Section Y, KZ: Kindergarten Section Z, HK: Kindergarten Disabled, KA: Kindergarten Section A, KB: Kindergarten Section B, • the student receives five doses of the DT, DTaP/DTP, Td, or Tdap vaccine, and • the difference between the last dose and the student's birthdate is greater than 48 months with a 4 day tolerance.

Rule	Requirements
<p>KG, 4 shots <i>Compliant</i></p>	<p>Students are considered compliant if the following conditions have been met:</p> <ul style="list-style-type: none"> • student is in state grade: KC: Kindergarten Section C, KD: Kindergarten Section D, KE: Kindergarten Section E, KF: Kindergarten Section F, KG: Kindergarten Section G, KI: Kindergarten Section I, KJ: Kindergarten Section J, KK: Kindergarten Section K, KL: Kindergarten Section L, KM: Kindergarten Section M, KN: Kindergarten Section N, KO: Kindergarten Section O, KP: Kindergarten Section P, KQ: Kindergarten Section Q, KR: Kindergarten Section R, KS: Kindergarten Section S, KT: Kindergarten Section T, KU: Kindergarten Section U, KV: Kindergarten Section V, KW: Kindergarten Section W, KX: Kindergarten Section X, KY: Kindergarten Section Y, KZ: Kindergarten Section Z, HK: Kindergarten Disabled, KA: Kindergarten Section A, KB: Kindergarten Section B, • the student receives four doses of the DT, DTaP/DTP, Td, or Tdap vaccine, and • the difference between the fourth dose and the student's birthdate is greater than 48 months with a 4 day tolerance.
<p>KG, 1 dose <i>In Grace Period</i></p>	<p>Students are considered in grace period if the following conditions have been met:</p> <ul style="list-style-type: none"> • student is in state grade: KC: Kindergarten Section C, KD: Kindergarten Section D, KE: Kindergarten Section E, KF: Kindergarten Section F, KG: Kindergarten Section G, KI: Kindergarten Section I, KJ: Kindergarten Section J, KK: Kindergarten Section K, KL: Kindergarten Section L, KM: Kindergarten Section M, KN: Kindergarten Section N, KO: Kindergarten Section O, KP: Kindergarten Section P, KQ: Kindergarten Section Q, KR: Kindergarten Section R, KS: Kindergarten Section S, KT: Kindergarten Section T, KU: Kindergarten Section U, KV: Kindergarten Section V, KW: Kindergarten Section W, KX: Kindergarten Section X, KY: Kindergarten Section Y, KZ: Kindergarten Section Z, HK: Kindergarten Disabled, KA: Kindergarten Section A, KB: Kindergarten Section B, • the student receives one dose of the DT, DTaP/DTP, Td, or Tdap vaccine, and • the difference between the last dose and the effective date is less than 28 days with a 0 (zero) day tolerance.

Rule	Requirements
<p>KG, 2 doses <i>In Grace Period</i></p>	<p>Students are considered in grace period if the following conditions have been met:</p> <ul style="list-style-type: none"> • student is in state grade: KC: Kindergarten Section C, KD: Kindergarten Section D, KE: Kindergarten Section E, KF: Kindergarten Section F, KG: Kindergarten Section G, KI: Kindergarten Section I, KJ: Kindergarten Section J, KK: Kindergarten Section K, KL: Kindergarten Section L, KM: Kindergarten Section M, KN: Kindergarten Section N, KO: Kindergarten Section O, KP: Kindergarten Section P, KQ: Kindergarten Section Q, KR: Kindergarten Section R, KS: Kindergarten Section S, KT: Kindergarten Section T, KU: Kindergarten Section U, KV: Kindergarten Section V, KW: Kindergarten Section W, KX: Kindergarten Section X, KY: Kindergarten Section Y, KZ: Kindergarten Section Z, HK: Kindergarten Disabled, KA: Kindergarten Section A, KB: Kindergarten Section B, • the student receives two doses of the DT, DTaP/DTP, Td, or Tdap vaccine, • the difference between the first dose and the student's birthdate is greater than 12 months with a 0 (zero) day tolerance, and • the difference between the last dose and the effective date is less than 5 months with a 1 day tolerance.
<p>KG, 3 doses <i>In Grace Period</i></p>	<p>Students are considered in grace period if the following conditions have been met:</p> <ul style="list-style-type: none"> • student is in state grade: KC: Kindergarten Section C, KD: Kindergarten Section D, KE: Kindergarten Section E, KF: Kindergarten Section F, KG: Kindergarten Section G, KI: Kindergarten Section I, KJ: Kindergarten Section J, KK: Kindergarten Section K, KL: Kindergarten Section L, KM: Kindergarten Section M, KN: Kindergarten Section N, KO: Kindergarten Section O, KP: Kindergarten Section P, KQ: Kindergarten Section Q, KR: Kindergarten Section R, KS: Kindergarten Section S, KT: Kindergarten Section T, KU: Kindergarten Section U, KV: Kindergarten Section V, KW: Kindergarten Section W, KX: Kindergarten Section X, KY: Kindergarten Section Y, KZ: Kindergarten Section Z, HK: Kindergarten Disabled, KA: Kindergarten Section A, KB: Kindergarten Section B, • the student receives three doses of the DT, DTaP/DTP, Td, or Tdap vaccine, and • the difference between the last dose and the effective date is less than 5 months with a 1 day tolerance.

Rule	Requirements
KG <i>Non-compliant</i>	Students are considered non-compliant if the following conditions have been met: <ul style="list-style-type: none"> • student is in state grade: KC: Kindergarten Section C, KD: Kindergarten Section D, KE: Kindergarten Section E, KF: Kindergarten Section F, KG: Kindergarten Section G, KI: Kindergarten Section I, KJ: Kindergarten Section J, KK: Kindergarten Section K, KL: Kindergarten Section L, KM: Kindergarten Section M, KN: Kindergarten Section N, KO: Kindergarten Section O, KP: Kindergarten Section P, KQ: Kindergarten Section Q, KR: Kindergarten Section R, KS: Kindergarten Section S, KT: Kindergarten Section T, KU: Kindergarten Section U, KV: Kindergarten Section V, KW: Kindergarten Section W, KX: Kindergarten Section X, KY: Kindergarten Section Y, KZ: Kindergarten Section Z, HK: Kindergarten Disabled, KA: Kindergarten Section A, KB: Kindergarten Section B, and • the student has not received any doses of the DT, DTaP/DTP, Td, or Tdap vaccine.
60 <= age < 84 - 5 shots <i>Compliant</i>	Students are considered compliant if the following conditions have been met: <ul style="list-style-type: none"> • the student is at least 60 months (5 years), but no older than 83 months old, • the student receives five doses of the DT, DTaP/DTP, Td, or Tdap vaccine, and • the difference between the last dose and the student's birthdate is greater than 48 months with a 4 day tolerance.
60 <= age < 84 - 4 shots <i>Compliant</i>	Students are considered compliant if the following conditions have been met: <ul style="list-style-type: none"> • the student is at least 60 months (5 years), but no older than 83 months old, • the student receives four doses of the DT, DTaP/DTP, Td, or Tdap vaccine, and • the difference between the last dose and the student's birthdate is greater than 48 months with a 4 day tolerance.
60 <=age < 84 1 dose <i>In Grace Period</i>	Students are considered in grace period if the following conditions have been met: <ul style="list-style-type: none"> • the student is at least 60 months (5 years), but no older than 83 months old, • the student receives one dose of the DT, DTaP/DTP, Td, or Tdap vaccine, and • the difference between the last dose and the effective date is less than 28 days with a 0 (zero) day tolerance.
60 <=age < 84 2 doses <i>In Grace Period</i>	Students are considered in grace period if the following conditions have been met: <ul style="list-style-type: none"> • the student is at least 60 months (5 years), but no older than 83 months old, • the student receives two doses of the DT, DTaP/DTP, Td, or Tdap vaccine, • the difference between the first dose and the student's birthdate is greater than 12 months with a 0 (zero) day tolerance, and • the difference between the last dose and the effective date is less than 5 months with a 1 day tolerance.

Rule	Requirements
60 ≤age < 84 3 doses <i>In Grace Period</i>	Students are considered in grace period if the following conditions have been met: <ul style="list-style-type: none"> the student is at least 60 months (5 years), but no older than 83 months old, the student receives three doses of the DT, DTaP/DTP, Td, or Tdap vaccine, and the difference between the last dose and the effective date is less than 5 months with a 1 day tolerance.
60 ≤ age < 84 <i>Non- compliant</i>	Students are considered non-compliant if the following conditions have been met: <ul style="list-style-type: none"> the student is at least 60 months (5 years), but no older than 83 months old, and the student does not receive any doses of the DT, DTaP/DTP, Td, or Tdap vaccine.
Grade 1- 12 <i>Compliant</i>	Students are considered compliant if the following conditions have been met: <ul style="list-style-type: none"> the student is at least 84 months (7 years) old, the student is in state grade: 01, 02, 03, 04, 05, 06, 07, 08, 09, 10, 11, 12, and the student receives three doses of the DT, DTaP/DTP, Td, or Tdap vaccine.
Grade 1- 12 1 dose <i>In Grace Period</i>	Students are considered in grace period if the following conditions have been met: <ul style="list-style-type: none"> the student is at least 84 months (7 years) old, the student is in state grade: 01, 02, 03, 04, 05, 06, 07, 08, 09, 10, 11, 12, the student receives one dose of the DT, DTaP/DTP, Td, or Tdap vaccine, and the difference between the last dose and the effective date is less than 28 days with a 0 (zero) day tolerance.
Grade 1- 12 2 dose <i>In Grace Period</i>	Students are considered in grace period if the following conditions have been met: <ul style="list-style-type: none"> the student is at least 84 months (7 years) old, the student is in state grade: 01, 02, 03, 04, 05, 06, 07, 08, 09, 10, 11, 12, the student receives two doses of the DT, DTaP/DTP, Td, or Tdap vaccine, the difference between the first dose and the student's birthdate is greater than 12 months with a 0 (zero) day tolerance, and the difference between the last dose and the effective date is less than 5 months with a 1 day tolerance.
Grade 1- 12 3 dose <i>In Grace Period</i>	Students are considered in grace period if the following conditions have been met: <ul style="list-style-type: none"> the student is at least 84 months (7 years) old, the student is in state grade: 01, 02, 03, 04, 05, 06, 07, 08, 09, 10, 11, 12, the student receives three doses of the DT, DTaP/DTP, Td, or Tdap vaccine, and the difference between the last dose and the effective date is less than 5 months with a 1 day tolerance.

Rule	Requirements
Grade 1-12 <i>Non-compliant</i>	Students are considered non-compliant if the following conditions have been met: <ul style="list-style-type: none"> the student is at least 84 months (7 years) old, the student is in state grade: 01, 02, 03, 04, 05, 06, 07, 08, 09, 10, 11, 12, and the student does not receive any doses of the DT, DTaP/DTP, Td, or Tdap vaccine.
Grace Period 1 dose Default <i>In Grace Period</i>	Students are considered in grace period if the following conditions have been met: <ul style="list-style-type: none"> the student receives one dose of the DT, DTaP/DTP, Td, or Tdap vaccine, and the difference between the last dose and the effective date is less than 28 days with a 0 (zero) day tolerance.
Grace Period 2 dose Default <i>In Grace Period</i>	Students are considered in grace period if the following conditions have been met: <ul style="list-style-type: none"> the student receives two doses of the DT, DTaP/DTP, Td, or Tdap vaccine, the difference between the first dose and the student's birthdate is greater than 12 months with a 0 (zero) day tolerance, and the difference between the last dose and the effective date is less than 5 months with a 1 day tolerance.
Grace Period 3 dose Default <i>In Grace Period</i>	Students are considered in grace period if the following conditions have been met: <ul style="list-style-type: none"> the student receives three doses of the DT, DTaP/DTP, Td, or Tdap vaccine, and the difference between the last dose and the effective date is less than 5 months with a 1 day tolerance.
Default <i>Non-compliant</i>	N/A

Tdap

These rules apply to students in grades 7-12:

Rule	Requirements
1 dose <i>Compliant</i>	Students are considered compliant if the following conditions have been met: <ul style="list-style-type: none"> the student is at least 84 months (7 years) old, the student receives 1 dose of the Tetanus, Diphtheria and Acellular Pertussis (Tdap) vaccine, and the difference between the last dose and the student's birthdate is greater than 84 months with a 4 day tolerance.

Rule	Requirements
7-12 No Tdap <i>Non-compliant</i>	Students are considered compliant if the following conditions have been met: <ul style="list-style-type: none"> the student is at least 84 months (7 years) old, and the student does not receive any doses of the Tetanus, Diphtheria and Acellular Pertussis (Tdap) vaccine.
Default <i>Non-Compliant</i>	Student is considered non-compliant if they are in state grade 07, 08, 09, 10, 11, or 12 and have not received any doses of the Tetanus, Diphtheria and Acellular Pertussis (Tdap) vaccine.

Polio

Rule	Requirements
Age 18 and older <i>No Requirement</i>	Students age 216 months (18 years) old are not required to receive any doses of the Polio vaccine.
3 doses EC, PK <i>Compliant</i>	Students are considered compliant if the following conditions have been met: <ul style="list-style-type: none"> student is in state grade: EC: Early Childhood, PS: Pre-School Screening, EE: Early Education, PA: Pre-Kindergarten Section A, PB: Pre-Kindergarten Section B, PC: Pre-Kindergarten Section C, PD: Pre-Kindergarten Section D, PE: Pre-Kindergarten Section E, PF: Pre-Kindergarten Section F, PG: Pre-Kindergarten Section G, PH: Pre-Kindergarten Section H, PI: Pre-Kindergarten Section I, PJ: Pre-Kindergarten Section J, RA: School Readiness Plus Section A, RB: School Readiness Plus Section B, RC: School Readiness Plus Section C, RD: School Readiness Plus Section D, RE: School Readiness Plus Section E, RF: School Readiness Plus Section F, RG: School Readiness Plus Section G, RH: School Readiness Plus Section H, RI: School Readiness Plus Section I, RJ: School Readiness Plus Section J, and the student receives three doses of the IPV, OPV, or IPV/OPV Polio vaccine.
4 doses <i>Compliant</i>	Students are considered compliant if the following conditions have been met: <ul style="list-style-type: none"> the student receives four doses of the IPV, OPV, or IPV/OPV Polio vaccine, the difference between the first dose and the student's birthdate is greater than 42 days with a 4 day tolerance, the difference between the second and previous dose is greater than 28 days with a 4 day tolerance, the difference between the third and previous dose is greater than 28 days with a 4 day tolerance, the difference between the fourth and previous dose is greater than 6 months with a 4 day tolerance, and the difference between the last dose and the student's birthdate is greater than 48 months with a 4 day tolerance.

Rule	Requirements
<p>3 doses <i>Compliant</i></p>	<p>Students are considered compliant if the following conditions have been met:</p> <ul style="list-style-type: none"> the student receives three doses of the IPV, OPV, or IPV/OPV Polio vaccine, the difference between the first dose and the student's birthdate is greater than 42 days with a 4 day tolerance, the difference between the second and previous dose is greater than 28 days with a 4 day tolerance, the difference between the third and previous dose is greater than 6 months with a 4 day tolerance, and the difference between the third dose and the student's birthdate is greater than 48 months with a 4 day tolerance.
<p>1 dose <i>In Grace Period</i></p>	<p>Students are considered in grace period if the following conditions have been met:</p> <ul style="list-style-type: none"> the student is in state grade: 01: Grade 1, 02: Grade 2, 03: Grade 3, 04: Grade 4, 05: Grade 5, 06: Grade 6, 07: Grade 7, 08: Grade 8, 09: Grade 9, 10: Grade 10, 11: Grade 11, 12: Grade 12, EC: Early Childhood, HK: Kindergarten Disabled, KA: Kindergarten Section A, KB: Kindergarten Section B, KC: Kindergarten Section C, KD: Kindergarten Section D, KE: Kindergarten Section E, KF: Kindergarten Section F, KG: Kindergarten Section G, KI: Kindergarten Section I, KJ: Kindergarten Section J, KK: Kindergarten Section K, KL: Kindergarten Section L (ia19-20), KM: Kindergarten Section M (ia19-20), KN: Kindergarten Section N (ia19-20), KO: Kindergarten Section O (ia19-20), KP: Kindergarten Section P (ia19-20), KQ: Kindergarten Section Q (ia19-20), KR: Kindergarten Section R (ia19-20), KS: Kindergarten Section S (ia19-20), KT: Kindergarten Section T (ia19-20), KU: Kindergarten Section U (ia19-20), KV: Kindergarten Section V (ia19-20), KW: Kindergarten Section W (ia19-20), KX: Kindergarten Section X (ia19-20), KY: Kindergarten Section Y (ia19-20), KZ: Kindergarten Section Z (ia19-20), PS: Pre-School Screening, PA: Pre-Kindergarten Section A, PB: Pre-Kindergarten Section B, PC: Pre-Kindergarten Section C, PD: Pre-Kindergarten Section D, PE: Pre-Kindergarten Section E, PF: Pre-Kindergarten Section F, PG: Pre-Kindergarten Section G, PH: Pre-Kindergarten Section H, PI: Pre-Kindergarten Section I, PJ: Pre-Kindergarten Section J, RA: School Readiness Plus Section A, RB: School Readiness Plus Section B, RC: School Readiness Plus Section C, RD: School Readiness Plus Section D, RE: School Readiness Plus Section E, RF: School Readiness Plus Section F, RG: School Readiness Plus Section G, RH: School Readiness Plus Section H, RI: School Readiness Plus Section I, RJ: School Readiness Plus Section J, the student receives one dose of the IPV, OPV, or IPV/OPV Polio vaccine, and the difference between the last dose and the effective date is less than 28 days with a 0 (zero) day tolerance.

Rule	Requirements
<p>2 doses <i>In Grace Period</i></p>	<p>Students are considered in grace period if the following conditions have been met:</p> <ul style="list-style-type: none"> the student is in state grade: 01: Grade 1, 02: Grade 2, 03: Grade 3, 04: Grade 4, 05: Grade 5, 06: Grade 6, 07: Grade 7, 08: Grade 8, 09: Grade 9, 10: Grade 10, 11: Grade 11, 12: Grade 12, EC: Early Childhood, HK: Kindergarten Disabled, KA: Kindergarten Section A, KB: Kindergarten Section B, KC: Kindergarten Section C, KD: Kindergarten Section D, KE: Kindergarten Section E, KF: Kindergarten Section F, KG: Kindergarten Section G, KI: Kindergarten Section I, KJ: Kindergarten Section J, KK: Kindergarten Section K, KL: Kindergarten Section L (ia19-20), KM: Kindergarten Section M (ia19-20), KN: Kindergarten Section N (ia19-20), KO: Kindergarten Section O (ia19-20), KP: Kindergarten Section P (ia19-20), KQ: Kindergarten Section Q (ia19-20), KR: Kindergarten Section R (ia19-20), KS: Kindergarten Section S (ia19-20), KT: Kindergarten Section T (ia19-20), KU: Kindergarten Section U (ia19-20), KV: Kindergarten Section V (ia19-20), KW: Kindergarten Section W (ia19-20), KX: Kindergarten Section X (ia19-20), KY: Kindergarten Section Y (ia19-20), KZ: Kindergarten Section Z (ia19-20), PS: Pre-School Screening, PA: Pre-Kindergarten Section A, PB: Pre-Kindergarten Section B, PC: Pre-Kindergarten Section C, PD: Pre-Kindergarten Section D, PE: Pre-Kindergarten Section E, PF: Pre-Kindergarten Section F, PG: Pre-Kindergarten Section G, PH: Pre-Kindergarten Section H, PI: Pre-Kindergarten Section I, PJ: Pre-Kindergarten Section J, RA: School Readiness Plus Section A, RB: School Readiness Plus Section B, RC: School Readiness Plus Section C, RD: School Readiness Plus Section D, RE: School Readiness Plus Section E, RF: School Readiness Plus Section F, RG: School Readiness Plus Section G, RH: School Readiness Plus Section H, RI: School Readiness Plus Section I, RJ: School Readiness Plus Section J, the student receives two doses of the IPV, OPV, or IPV/OPV Polio vaccine, and the difference between the last dose and the effective date is less than 5 months with a 1 day tolerance.

Rule	Requirements
<p>Default PK-12 <i>Non-compliant</i></p>	<p>Students are considered non-compliant if the following conditions have been met:</p> <ul style="list-style-type: none"> the student is in state grade: 01: Grade 1, 02: Grade 2, 03: Grade 3, 04: Grade 4, 05: Grade 5, 06: Grade 6, 07: Grade 7, 08: Grade 8, 09: Grade 9, 10: Grade 10, 11: Grade 11, 12: Grade 12, EC: Early Childhood, HK: Kindergarten Disabled, KA: Kindergarten Section A, KB: Kindergarten Section B, KC: Kindergarten Section C, KD: Kindergarten Section D, KE: Kindergarten Section E, KF: Kindergarten Section F, KG: Kindergarten Section G, KI: Kindergarten Section I, KJ: Kindergarten Section J, KK: Kindergarten Section K, KL: Kindergarten Section L (ia19-20), KM: Kindergarten Section M (ia19-20), KN: Kindergarten Section N (ia19-20), KO: Kindergarten Section O (ia19-20), KP: Kindergarten Section P (ia19-20), KQ: Kindergarten Section Q (ia19-20), KR: Kindergarten Section R (ia19-20), KS: Kindergarten Section S (ia19-20), KT: Kindergarten Section T (ia19-20), KU: Kindergarten Section U (ia19-20), KV: Kindergarten Section V (ia19-20), KW: Kindergarten Section W (ia19-20), KX: Kindergarten Section X (ia19-20), KY: Kindergarten Section Y (ia19-20), KZ: Kindergarten Section Z (ia19-20), PS: Pre-School Screening, PA: Pre-Kindergarten Section A, PB: Pre-Kindergarten Section B, PC: Pre-Kindergarten Section C, PD: Pre-Kindergarten Section D, PE: Pre-Kindergarten Section E, PF: Pre-Kindergarten Section F, PG: Pre-Kindergarten Section G, PH: Pre-Kindergarten Section H, PI: Pre-Kindergarten Section I, PJ: Pre-Kindergarten Section J, RA: School Readiness Plus Section A, RB: School Readiness Plus Section B, RC: School Readiness Plus Section C, RD: School Readiness Plus Section D, RE: School Readiness Plus Section E, RF: School Readiness Plus Section F, RG: School Readiness Plus Section G, RH: School Readiness Plus Section H, RI: School Readiness Plus Section I, RJ: School Readiness Plus Section J, and the student does not receive any doses of the IPV, OPV, or IPV/OPV Polio vaccine.
<p>0-2 months <i>No Requirement</i></p>	<p>Students age 0 - 2 months old are not required to receive any doses of the Polio vaccine.</p>
<p>3-4 months <i>Compliant</i></p>	<p>Students are considered compliant if the following conditions have been met:</p> <ul style="list-style-type: none"> the student is at least 3 months, but no older than 4 months old, and the student receives one dose of the IPV, OPV, or IPV/OPV Polio vaccine.
<p>5-18 months <i>Compliant</i></p>	<p>Students are considered compliant if the following conditions have been met:</p> <ul style="list-style-type: none"> the student is no older than 19 months old, and the student receives two doses of the IPV, OPV, or IPV/OPV Polio vaccine.

Rule	Requirements
19 months and older <i>Compliant</i>	Students are considered compliant if the following conditions have been met: <ul style="list-style-type: none"> the student is at least 5 months, but no older than 18 months old, and the student receives three doses of the IPV, OPV, or IPV/OPV Polio vaccine.
Default 1 dose <i>In Grace Period</i>	Students are considered in grace period if the following conditions have been met: <ul style="list-style-type: none"> the student receives one dose of the IPV, OPV, or IPV/OPV Polio vaccine, the difference between the last dose and the effective date is less than 28 days with a 0 (zero) day tolerance.
Default 2 dose <i>In Grace Period</i>	Students are considered in grace period if the following conditions have been met: <ul style="list-style-type: none"> the student receives two doses of the IPV, OPV, or IPV/OPV Polio vaccine, and the difference between the last dose and the effective date is less than 5 months with a 1 day tolerance.
Default <i>Non-compliant</i>	N/A

MMR

Rule	Requirements
PK and EC (PA-PJ, PS, EE)	1 dose of MMR, MMRV, or Measles, Mumps and Rubella individually, on or after 12 months of age
K-12	MMR, MMRV, or Measles, Mumps and Rubella individually First dose on or after 12 months of age, second dose 28 days after previous dose.
11 Months or Younger <i>No Requirement</i>	Students 11 months old or younger are not required to receive any doses of the MMR, MMRV, or Measles, Mumps and Rubella individual vaccine.

Rule	Requirements
<p>1 dose Required (PS, EC) <i>Compliant</i></p>	<p>Students are considered compliant if the following conditions have been met:</p> <ul style="list-style-type: none"> • student is in state grade: EC: Early Childhood, PS: Pre-School Screening, EE: Early Education, PA: Pre-Kindergarten Section A, PB: Pre-Kindergarten Section B, PC: Pre-Kindergarten Section C, PD: Pre-Kindergarten Section D, PE: Pre-Kindergarten Section E, PF: Pre-Kindergarten Section F, PG: Pre-Kindergarten Section G, PH: Pre-Kindergarten Section H, PI: Pre-Kindergarten Section I, PJ: Pre-Kindergarten Section J, RA: School Readiness Plus Section A, RB: School Readiness Plus Section B, RC: School Readiness Plus Section C, RD: School Readiness Plus Section D, RE: School Readiness Plus Section E, RF: School Readiness Plus Section F, RG: School Readiness Plus Section G, RH: School Readiness Plus Section H, RI: School Readiness Plus Section I, RJ: School Readiness Plus Section J, • the student receives one dose of the MMR or MMRV vaccine, and • the difference between the first dose and the student's birthdate is greater than 12 months with a 4 day tolerance.
<p>1 dose Required 16 to 59 months <i>Compliant</i></p>	<p>Students are considered compliant if the following conditions have been met:</p> <ul style="list-style-type: none"> • the student is at least 16 months, but no older than 59 months old, • the student receives one dose of the MMR or MMRV vaccine, and • the difference between the first dose and the student's birthdate is greater than 12 months with a 4 day tolerance.
<p>1 Measles, Mumps, Rubella 16 to 59 Mons <i>Compliant</i></p>	<p>Students are considered compliant if the following conditions have been met:</p> <ul style="list-style-type: none"> • the student is at least 16 months, but no older than 59 months old, • the student receives one dose of the MMR, MMRV, or Measles individual vaccine, and <ul style="list-style-type: none"> ◦ the difference between the first dose and the student's birthdate is greater than 12 months with a 4 day tolerance, OR • the student receives one dose of the MMR, MMRV, or Mumps individual vaccine, and <ul style="list-style-type: none"> ◦ the difference between the first dose and the student's birthdate is greater than 12 months with a 4 day tolerance, OR • the student receives one dose of the MMR, MMRV, or Rubella individual vaccine, and <ul style="list-style-type: none"> ◦ the difference between the first dose and the student's birthdate is greater than 12 months with a 4 day tolerance.

Rule	Requirements
<p>1 Measles, Mumps, Rubella (PS, EC) <i>Compliant</i></p>	<p>Students are considered compliant if the following conditions have been met:</p> <ul style="list-style-type: none"> • student is in state grade: EC: Early Childhood, PS: Pre-School Screening, EE: Early Education, PA: Pre-Kindergarten Section A, PB: Pre-Kindergarten Section B, PC: Pre-Kindergarten Section C, PD: Pre-Kindergarten Section D, PE: Pre-Kindergarten Section E, PF: Pre-Kindergarten Section F, PG: Pre-Kindergarten Section G, PH: Pre-Kindergarten Section H, PI: Pre-Kindergarten Section I, PJ: Pre-Kindergarten Section J, • the student receives one dose of the MMR, MMRV, or Measles individual vaccine, and <ul style="list-style-type: none"> ◦ the difference between the first dose and the student's birthdate is greater than 12 months with a 4 day tolerance, OR • the student receives one dose of the MMR, MMRV, or Mumps individual vaccine, and <ul style="list-style-type: none"> ◦ the difference between the first dose and the student's birthdate is greater than 12 months with a 4 day tolerance, OR • the student receives one dose of the MMR, MMRV, or Rubella individual vaccine, and <ul style="list-style-type: none"> ◦ the difference between the first dose and the student's birthdate is greater than 12 months with a 4 day tolerance.
<p>Default PS, EC <i>Non-compliant</i></p>	<p>Students are considered non-compliant if the following conditions have been met:</p> <ul style="list-style-type: none"> • student is in state grade: EC: Early Childhood, PS: Pre-School Screening, EE: Early Education, PA: Pre-Kindergarten Section A, PB: Pre-Kindergarten Section B, PC: Pre-Kindergarten Section C, PD: Pre-Kindergarten Section D, PE: Pre-Kindergarten Section E, PF: Pre-Kindergarten Section F, PG: Pre-Kindergarten Section G, PH: Pre-Kindergarten Section H, PI: Pre-Kindergarten Section I, PJ: Pre-Kindergarten Section J, RA: School Readiness Plus Section A, RB: School Readiness Plus Section B, RC: School Readiness Plus Section C, RD: School Readiness Plus Section D, RE: School Readiness Plus Section E, RF: School Readiness Plus Section F, RG: School Readiness Plus Section G, RH: School Readiness Plus Section H, RI: School Readiness Plus Section I, RJ: School Readiness Plus Section J, and • the student has not received any doses of the MMR, MMRV, or Measles, Mumps and Rubella individual vaccine.
<p>Default 12 to 59 months <i>Non-compliant</i></p>	<p>Students are considered non-compliant if the following conditions have been met:</p> <ul style="list-style-type: none"> • the student is at least 12 months, but no older than 59 months old, and • the student has not received any doses of the MMR, MMRV, or Measles, Mumps and Rubella individual vaccine.

Rule	Requirements
<p>2 doses MMR K-12 <i>Compliant</i></p>	<p>Students are considered compliant if the following conditions have been met:</p> <ul style="list-style-type: none"> the student is in state grade: 01: Grade 1, 02: Grade 2, 03: Grade 3, 04: Grade 4, 05: Grade 5, 06: Grade 6, 07: Grade 7, 08: Grade 8, 09: Grade 9, 10: Grade 10, 11: Grade 11, 12: Grade 12, EC: Early Childhood, HK: Kindergarten Disabled, KA: Kindergarten Section A, KB: Kindergarten Section B, KC: Kindergarten Section C, KD: Kindergarten Section D, KE: Kindergarten Section E, KF: Kindergarten Section F, KG: Kindergarten Section G, KI: Kindergarten Section I, KJ: Kindergarten Section J, KK: Kindergarten Section K, KL: Kindergarten Section L (ia19-20), KM: Kindergarten Section M (ia19-20), KN: Kindergarten Section N (ia19-20), KO: Kindergarten Section O (ia19-20), KP: Kindergarten Section P (ia19-20), KQ: Kindergarten Section Q (ia19-20), KR: Kindergarten Section R (ia19-20), KS: Kindergarten Section S (ia19-20), KT: Kindergarten Section T (ia19-20), KU: Kindergarten Section U (ia19-20), KV: Kindergarten Section V (ia19-20), KW: Kindergarten Section W (ia19-20), KX: Kindergarten Section X (ia19-20), KY: Kindergarten Section Y (ia19-20), KZ: Kindergarten Section Z (ia19-20), PS: Pre-School Screening, the student receives two doses of the MMR or MMRV vaccine, the difference between the first dose and the student's birthdate is greater than 12 months with a 4 day tolerance, and the difference between the second dose and the previous is greater than 28 days with a 4 day tolerance.

Rule	Requirements
<p>2 doses Measles, Mumps, Rubella K- 12 <i>Compliant</i></p>	<p>Students are considered compliant if the following conditions have been met:</p> <ul style="list-style-type: none"> • the student is in state grade: 01: Grade 1, 02: Grade 2, 03: Grade 3, 04: Grade 4, 05: Grade 5, 06: Grade 6, 07: Grade 7, 08: Grade 8, 09: Grade 9, 10: Grade 10, 11: Grade 11, 12: Grade 12, EC: Early Childhood, HK: Kindergarten Disabled, KA: Kindergarten Section A, KB: Kindergarten Section B, KC: Kindergarten Section C, KD: Kindergarten Section D, KE: Kindergarten Section E, KF: Kindergarten Section F, KG: Kindergarten Section G, KI: Kindergarten Section I, KJ: Kindergarten Section J, KK: Kindergarten Section K, KL: Kindergarten Section L (ia19-20), KM: Kindergarten Section M (ia19-20), KN: Kindergarten Section N (ia19-20), KO: Kindergarten Section O (ia19-20), KP: Kindergarten Section P (ia19-20), KQ: Kindergarten Section Q (ia19-20), KR: Kindergarten Section R (ia19-20), KS: Kindergarten Section S (ia19-20), KT: Kindergarten Section T (ia19-20), KU: Kindergarten Section U (ia19-20), KV: Kindergarten Section V (ia19-20), KW: Kindergarten Section W (ia19-20), KX: Kindergarten Section X (ia19-20), KY: Kindergarten Section Y (ia19-20), KZ: Kindergarten Section Z (ia19-20), PS: Pre-School Screening, • the student receives two doses of the MMR, MMRV, or Measles individual vaccine, <ul style="list-style-type: none"> ◦ the difference between the first dose and the student's birthdate is greater than 12 months with a 4 day tolerance, and ◦ the difference between the second dose and the previous is greater than 28 days with a 4 day tolerance, OR • the student receives two dose of the MMR, MMRV, or Mumps individual vaccine, <ul style="list-style-type: none"> ◦ the difference between the first dose and the student's birthdate is greater than 12 months with a 4 day tolerance, and ◦ the difference between the second dose and the previous is greater than 28 days with a 4 day tolerance, OR • the student receives one two of the MMR, MMRV, or Rubella individual vaccine, <ul style="list-style-type: none"> ◦ the difference between the first dose and the student's birthdate is greater than 12 months with a 4 day tolerance, and ◦ the difference between the second dose and the previous is greater than 28 days with a 4 day tolerance.

Rule	Requirements
<p>2 dose K-12 <i>In Grace Period</i></p>	<p>Students are considered in grace period if the following conditions have been met:</p> <ul style="list-style-type: none"> the student is in state grade: 01: Grade 1, 02: Grade 2, 03: Grade 3, 04: Grade 4, 05: Grade 5, 06: Grade 6, 07: Grade 7, 08: Grade 8, 09: Grade 9, 10: Grade 10, 11: Grade 11, 12: Grade 12, EC: Early Childhood, HK: Kindergarten Disabled, KA: Kindergarten Section A, KB: Kindergarten Section B, KC: Kindergarten Section C, KD: Kindergarten Section D, KE: Kindergarten Section E, KF: Kindergarten Section F, KG: Kindergarten Section G, KI: Kindergarten Section I, KJ: Kindergarten Section J, KK: Kindergarten Section K, KL: Kindergarten Section L (ia19-20), KM: Kindergarten Section M (ia19-20), KN: Kindergarten Section N (ia19-20), KO: Kindergarten Section O (ia19-20), KP: Kindergarten Section P (ia19-20), KQ: Kindergarten Section Q (ia19-20), KR: Kindergarten Section R (ia19-20), KS: Kindergarten Section S (ia19-20), KT: Kindergarten Section T (ia19-20), KU: Kindergarten Section U (ia19-20), KV: Kindergarten Section V (ia19-20), KW: Kindergarten Section W (ia19-20), KX: Kindergarten Section X (ia19-20), KY: Kindergarten Section Y (ia19-20), KZ: Kindergarten Section Z (ia19-20), PS: Pre-School Screening, the student receives one dose of the MMR, MMRV, or Measles, Mumps and Rubella individual vaccine, and the difference between the last dose and the effective date is less than 28 days with a 0 (zero) day tolerance.
<p>Default K-12 <i>Non-compliant</i></p>	<p>Students are considered non-compliant if the following conditions have been met:</p> <ul style="list-style-type: none"> the student is in state grade: 01: Grade 1, 02: Grade 2, 03: Grade 3, 04: Grade 4, 05: Grade 5, 06: Grade 6, 07: Grade 7, 08: Grade 8, 09: Grade 9, 10: Grade 10, 11: Grade 11, 12: Grade 12, EC: Early Childhood, HK: Kindergarten Disabled, KA: Kindergarten Section A, KB: Kindergarten Section B, KC: Kindergarten Section C, KD: Kindergarten Section D, KE: Kindergarten Section E, KF: Kindergarten Section F, KG: Kindergarten Section G, KI: Kindergarten Section I, KJ: Kindergarten Section J, KK: Kindergarten Section K, KL: Kindergarten Section L (ia19-20), KM: Kindergarten Section M (ia19-20), KN: Kindergarten Section N (ia19-20), KO: Kindergarten Section O (ia19-20), KP: Kindergarten Section P (ia19-20), KQ: Kindergarten Section Q (ia19-20), KR: Kindergarten Section R (ia19-20), KS: Kindergarten Section S (ia19-20), KT: Kindergarten Section T (ia19-20), KU: Kindergarten Section U (ia19-20), KV: Kindergarten Section V (ia19-20), KW: Kindergarten Section W (ia19-20), KX: Kindergarten Section X (ia19-20), KY: Kindergarten Section Y (ia19-20), KZ: Kindergarten Section Z (ia19-20), PS: Pre-School Screening, and the student has not received any doses of the MMR, MMRV, or Measles, Mumps and Rubella individual vaccine.

Hib

Rule	Requirements
0-2 months <i>No Requirement</i>	Students 2 months old or younger are not required to receive any doses of the HIB vaccine.
3-4 months <i>Compliant</i>	Students are considered compliant if the following conditions have been met: <ul style="list-style-type: none"> the student is at least 3 months, but no older than 4 months old, and the student receives one dose of the HIB vaccine.
5-6 months <i>Compliant</i>	Students are considered compliant if the following conditions have been met: <ul style="list-style-type: none"> the student is at least 5 months, but no older than 6 months old, and the student receives two doses of the HIB vaccine.
7-11 months <i>Compliant</i>	Students are considered compliant if the following conditions have been met: <ul style="list-style-type: none"> the student is at least 7 months, but no older than 11 months old, and the student receives three doses of the HIB vaccine.
60 months and older <i>No Requirement</i>	Students 60 months old or older are not required to receive any doses of the HIB vaccine.
Grades K-12 <i>No Requirement</i>	Students in state grades: K-12 are not required to receive any doses of the HIB vaccine.
1 dose EC, PK <i>Compliant</i>	Students are considered compliant if the following conditions have been met: <ul style="list-style-type: none"> the student is no older than 59 months old, student is in state grade: EC: Early Childhood, PS: Pre-School Screening, EE: Early Education, PA: Pre-Kindergarten Section A, PB: Pre-Kindergarten Section B, PC: Pre-Kindergarten Section C, PD: Pre-Kindergarten Section D, PE: Pre-Kindergarten Section E, PF: Pre-Kindergarten Section F, PG: Pre-Kindergarten Section G, PH: Pre-Kindergarten Section H, PI: Pre-Kindergarten Section I, PJ: Pre-Kindergarten Section J, RA: School Readiness Plus Section A, RB: School Readiness Plus Section B, RC: School Readiness Plus Section C, RD: School Readiness Plus Section D, RE: School Readiness Plus Section E, RF: School Readiness Plus Section F, RG: School Readiness Plus Section G, RH: School Readiness Plus Section H, RI: School Readiness Plus Section I, RJ: School Readiness Plus Section J, the student receives one dose of the HIB, and the difference between the first dose and the student's birthdate is greater than 12 months with a 4 day tolerance.

Rule	Requirements
<p>1 dose past 4 wks EC, PK <i>In Grace Period</i></p>	<p>Students are considered in grace period if the following conditions have been met:</p> <ul style="list-style-type: none"> the student is no older than 59 months old, student is in state grade: EC: Early Childhood, PS: Pre-School Screening, EE: Early Education, PA: Pre-Kindergarten Section A, PB: Pre-Kindergarten Section B, PC: Pre-Kindergarten Section C, PD: Pre-Kindergarten Section D, PE: Pre-Kindergarten Section E, PF: Pre-Kindergarten Section F, PG: Pre-Kindergarten Section G, PH: Pre-Kindergarten Section H, PI: Pre-Kindergarten Section I, PJ: Pre-Kindergarten Section J, RA: School Readiness Plus Section A, RB: School Readiness Plus Section B, RC: School Readiness Plus Section C, RD: School Readiness Plus Section D, RE: School Readiness Plus Section E, RF: School Readiness Plus Section F, RG: School Readiness Plus Section G, RH: School Readiness Plus Section H, RI: School Readiness Plus Section I, RJ: School Readiness Plus Section J, the student receives one dose of the HIB, the difference between the last dose and the effective date is less than 28 days with a 0 (zero) day tolerance, and the difference between the last dose and the student's birthdate is less than 11 months with a 1 day tolerance.
<p>Past 4 wks <i>In Grace Period</i></p>	<p>Students are considered in grace period if the following conditions have been met:</p> <ul style="list-style-type: none"> the student receives one dose of the HIB, and the difference between the last dose and the effective date is less than 28 days with a 0 (zero) day tolerance.
<p>Default EC, PK <i>Non-compliant</i></p>	<p>Students in state grade: EC: Early Childhood, PS: Pre-School Screening, EE: Early Education, PA: Pre-Kindergarten Section A, PB: Pre-Kindergarten Section B, PC: Pre-Kindergarten Section C, PD: Pre-Kindergarten Section D, PE: Pre-Kindergarten Section E, PF: Pre-Kindergarten Section F, PG: Pre-Kindergarten Section G, PH: Pre-Kindergarten Section H, PI: Pre-Kindergarten Section I, PJ: Pre-Kindergarten Section J, RA: School Readiness Plus Section A, RB: School Readiness Plus Section B, RC: School Readiness Plus Section C, RD: School Readiness Plus Section D, RE: School Readiness Plus Section E, RF: School Readiness Plus Section F, RG: School Readiness Plus Section G, RH: School Readiness Plus Section H, RI: School Readiness Plus Section I, RJ: School Readiness Plus Section J, who have not received any doses of the HIB vaccine are considered non-compliant.</p>
<p>Default <i>Non-compliant</i></p>	<p>N/A</p>

Varicella

Rule	Requirements
11 Months or Younger <i>No Requirement</i>	Students 11 months old or younger are not required to receive any doses of the Varicella or MMRV vaccine.
1 dose (PS, EC) <i>Compliant</i>	Students are considered compliant if the following conditions have been met: <ul style="list-style-type: none"> • student is in state grade: EC: Early Childhood, PS: Pre-School Screening, EE: Early Education, PA: Pre-Kindergarten Section A, PB: Pre-Kindergarten Section B, PC: Pre-Kindergarten Section C, PD: Pre-Kindergarten Section D, PE: Pre-Kindergarten Section E, PF: Pre-Kindergarten Section F, PG: Pre-Kindergarten Section G, PH: Pre-Kindergarten Section H, PI: Pre-Kindergarten Section I, PJ: Pre-Kindergarten Section J, RA: School Readiness Plus Section A, RB: School Readiness Plus Section B, RC: School Readiness Plus Section C, RD: School Readiness Plus Section D, RE: School Readiness Plus Section E, RF: School Readiness Plus Section F, RG: School Readiness Plus Section G, RH: School Readiness Plus Section H, RI: School Readiness Plus Section I, RJ: School Readiness Plus Section J, • the student receives one dose of the Varicella or MMRV vaccine, and • the difference between the first dose and the student's birthdate is greater than 12 months with a 4 day tolerance.
2 doses required <i>Compliant</i>	Students are considered compliant if the following conditions have been met: <ul style="list-style-type: none"> • the student receives two doses of the Varicella or MMRV vaccine, • the difference between the first dose and the student's birthdate is greater than 12 months with a 4 day tolerance, and • the difference between the second dose and the previous is greater than 28 days with a 4 day tolerance.
1 dose 13+ <i>In Grace Period</i>	Students are considered in grace period if the following conditions have been met: <ul style="list-style-type: none"> • the student is at least 156 months (13 years) old, • the student receives one dose of the Varicella or MMRV vaccine, and • the difference between the last dose and the effective date is less than 28 days with a 0 (zero) day tolerance.
1 dose Under 13 <i>In Grace Period</i>	Students are considered in grace period if the following conditions have been met: <ul style="list-style-type: none"> • the student is no older than 155 months old, • the student receives one dose of the Varicella or MMRV vaccine, and • the difference between the last dose and the effective date is less than 28 days with a 0 (zero) day tolerance.
Default <i>Non-compliant</i>	N/A

Rule	Requirements
------	--------------

Meningococcal MCV4

Rule	Requirements
1 Dose <i>Compliant</i> <i>Active End</i> <i>Date:</i> <i>6/30/2021</i>	Students are considered compliant if the following conditions have been met: <ul style="list-style-type: none"> the student is in state grade 07, 08, 09, 10, 11, or 12 the student receives 1 dose of the Meningococcal (MCV4) vaccine, and the difference between the last dose and the student's birthdate is greater than 120 months with a 4 day tolerance.
1 dose Grade 7-11 21-22 <i>Compliant</i> <i>Active Start</i> <i>Date:</i> <i>7/01/2021</i>	Students are considered compliant if the following conditions have been met: <ul style="list-style-type: none"> the student is in state grade 07, 08, 09, 10, or 11, the student receives 1 dose of the Meningococcal (MCV4) vaccine, the difference between the last dose and the student's birthdate is greater than 120 months with a 4 day tolerance.
2 Doses 21-22 <i>Compliant</i> <i>Active Start</i> <i>Date: 7/1/2021</i>	Students are considered compliant if the following conditions have been met: <ul style="list-style-type: none"> the student is in state grade 12, the student receives 2 doses of the Meningococcal (MCV4) vaccine, the difference between the second and previous dose is greater than 56 days with a 4 day tolerance, and the difference between the last dose and the student's birthdate is greater than 186 months with a 4 day tolerance.
1 Dose at Age 16 - 21-22 <i>Compliant</i> <i>Active Start</i> <i>Date: 7/1/2021</i>	Students are considered compliant if the following conditions have been met: <ul style="list-style-type: none"> the student receives 1 dose of the Meningococcal (MCV4) vaccine, and the difference between the last dose and the student's birthdate is greater than or equal to 192 months with a 4 day tolerance.
No Dose <i>Non-compliant</i>	Students are considered compliant if the following conditions have been met: <ul style="list-style-type: none"> the student is at least 120 months (10 years) old, the student is in state grade 07, 08, 09, 10, 11, or 12 and the student receives 0 (zero) dose of the Meningococcal (MCV4) vaccine.

Hepatitis A

Rule	Requirements
1 dose <i>Compliant</i>	Students are considered compliant if the following conditions have been met: <ul style="list-style-type: none"> • student is in state grade: EC: Early Childhood, PS: Pre-School Screening, EE: Early Education, PA: Pre-Kindergarten Section A, PB: Pre-Kindergarten Section B, PC: Pre-Kindergarten Section C, PD: Pre-Kindergarten Section D, PE: Pre-Kindergarten Section E, PF: Pre-Kindergarten Section F, PG: Pre-Kindergarten Section G, PH: Pre-Kindergarten Section H, PI: Pre-Kindergarten Section I, PJ: Pre-Kindergarten Section J, RA: School Readiness Plus Section A, RB: School Readiness Plus Section B, RC: School Readiness Plus Section C, RD: School Readiness Plus Section D, RE: School Readiness Plus Section E, RF: School Readiness Plus Section F, RG: School Readiness Plus Section G, RH: School Readiness Plus Section H, RI: School Readiness Plus Section I, RJ: School Readiness Plus Section J, • the student is at least 12 months (1 year) old, • the student receives 1 dose of the Hepatitis A (Hep A) vaccine, and • the difference between the first dose and the student's birthdate is greater than 12 months with a 4 day tolerance.

PPV

Requirements	Rule
Over 24 months <i>No Requirements</i>	Students over 24 months (2 years) old are not required to receive any doses of the PPV vaccine.
Under 2 months <i>No Requirements</i>	Student younger than 2 months old are not required to receive any doses of the PPV vaccine.
3 doses <i>Compliant</i>	Students are considered compliant if the following conditions have been met: <ul style="list-style-type: none"> • the student is at least 2 months and no older than 11 months old, and • the student receives 3 doses of the PPV vaccine.

Requirements	Rule
<p>4 doses <i>Compliant</i></p>	<p>Students are considered compliant if the following conditions have been met:</p> <ul style="list-style-type: none"> • the student is at least 2 months old, • the student receives 4 doses of the PPV vaccine, • the difference between the first dose and the student's birthdate is less than 11 months with a 4 day tolerance, • the difference between the second dose and the student's birthdate is less than 11 months with a 4 day tolerance, • the difference between the third dose and the student's birthdate is less than 11 months with a 4 day tolerance, and • the difference between the last dose and the student's birthdate is greater than 12 months with a 4 day tolerance.
<p>1 dose <i>In Grace Period</i></p>	<p>Students are considered in grace period if the following conditions have been met:</p> <ul style="list-style-type: none"> • the student receives 1 dose of the PPV vaccine, and • the difference between the last dose and the effective date is less than 56 days with a 0 (zero) day tolerance.

Previous Versions

[Immunization Rules \(Minnesota\) \[.2136 - .2140\]](#)

[Minnesota Immunization Rules \[.2112 - .2132\]](#)