

# Immunization Rules (Nevada) (.2219 and previous)

Last Modified on 10/22/2022 10:53 am CDT

You are viewing a previous version of this article. See [Immunization Rules \(Nevada\) \(.2219 and previous\)](#) for the most current information.

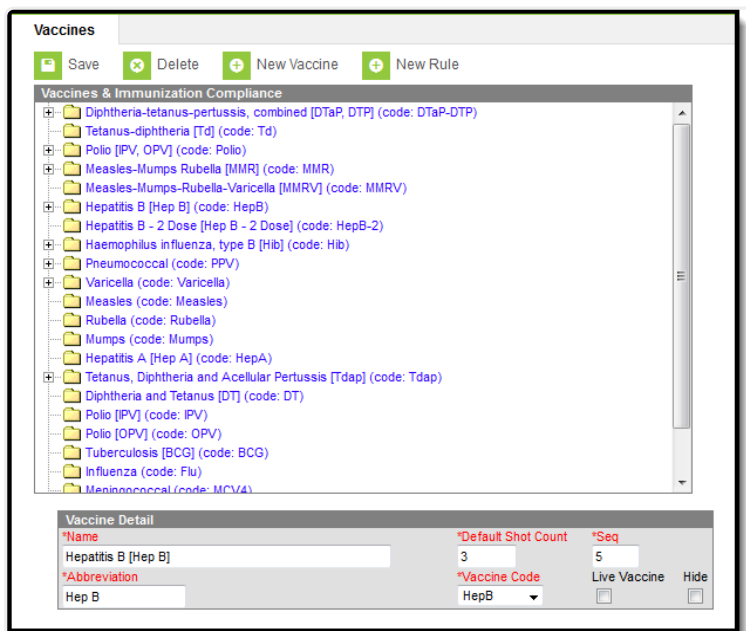
[Immunization Rules](#) | [DTaP](#) | [Tdap](#) | [Hepatitis B](#) | [Hepatitis A](#) | [MMR](#) | [Varicella](#) | [Polio](#) | [Meningococcal MCV4](#)

**Classic Path:** [System Administration](#) > [Health](#) > [Vaccines](#)

**Search Terms:** [Vaccines](#)

Health vaccines and their associated compliance listing are based on state guidelines. While Infinite Campus maintains standard guidelines for all states, districts have the ability to enter additional compliances. The following information describes vaccine compliance rules as defined by the Nevada Department of Health and Human Services.

For more information about the creation, modification or deletion of vaccine compliances, see the [Vaccines](#) page.



*Nevada Vaccine & Immunization Compliance*

## Immunization Rules

The following tables describe all Nevada immunization rules per vaccine.



Immunization compliance rules are read-only.

## DTaP

Rule	Conditions
<b>0-1 months</b> <i>No Requirement</i>	N/A Student's age 0-1 month old are not required to receive any doses of the DTaP vaccine.
<b>2-3 months 1 dose</b> <i>Compliant</i>	The student is considered compliant if the following conditions have been met: <ul style="list-style-type: none"> <li>• the student is at least 2 months, and no older than 3 months old,</li> <li>• the student receives one dose of the DTaP, DTP or Tdap vaccine, and</li> <li>• the difference between the first dose and the student's birthdate is greater than 42 days with a 4 day tolerance.</li> </ul>
<b>4-5 months 2 doses</b> <i>Compliant</i>	The student is considered compliant if the following conditions have been met: <ul style="list-style-type: none"> <li>• the student is at least 4 months, and no older than 5 months old,</li> <li>• the student receives two doses of the DT, DTaP/DTP, Td, or Tdap vaccine,               <ul style="list-style-type: none"> <li>◦ the difference between the first dose and the student's birthdate is greater than 42 days with a 4 day tolerance,</li> <li>◦ the difference between the second dose and the previous is greater than 28 days with a 4 day tolerance,</li> </ul> </li> <li>• the student receives one dose of the DTaP, DTP or Tdap vaccine, and               <ul style="list-style-type: none"> <li>◦ the difference between the first dose and the student's birthdate is greater than 42 days with a 4 day tolerance.</li> </ul> </li> </ul>
<b>6-11 months 3 doses</b> <i>Compliant</i>	The student is considered compliant if the following conditions have been met: <ul style="list-style-type: none"> <li>• the student is at least 6 months, and no older than 11 months old,</li> <li>• the student receives three doses of the DT, DTaP/DTP, Td, or Tdap vaccine,               <ul style="list-style-type: none"> <li>◦ the difference between the first dose and the student's birthdate is greater than 42 days with a 4 day tolerance,</li> <li>◦ the difference between the second dose and the previous is greater than 28 days with a 4 day tolerance,</li> <li>◦ the difference between the last dose and the previous is greater than 28 days with a 4 day tolerance,</li> </ul> </li> <li>• the student receives one dose of the DTaP, DTP or Tdap vaccine, and               <ul style="list-style-type: none"> <li>◦ the difference between the first dose and the student's birthdate is greater than 42 days with a 4 day tolerance.</li> </ul> </li> </ul>

Rule	Conditions
<p><b>3 doses Last over 7 yrs</b> <i>Compliant</i></p>	<p>The student is considered compliant if the following conditions have been met:</p> <ul style="list-style-type: none"> <li>• the student receives three doses of the DT, DTaP/DTP, Td, or Tdap vaccine,</li> <li>• the difference between the first dose and the student's birthdate is greater than 12 months with a 4 day tolerance,</li> <li>• the difference between the second dose and the previous is greater than 28 days with a 4 day tolerance,</li> <li>• the difference between the third dose and the previous is greater than 6 months with a 4 day tolerance, and</li> <li>• the difference between the third dose and the student's birthdate is greater than 84 months with a 4 day tolerance.</li> </ul>
<p><b>4 doses Under 4</b> <i>Compliant</i></p>	<p>The student is considered compliant if the following conditions have been met:</p> <ul style="list-style-type: none"> <li>• the student is at least 12 months, but no older than 47 months, old,</li> <li>• the student receives four doses of the DT, DTaP/DTP, Td, or Tdap vaccine, <ul style="list-style-type: none"> <li>◦ the difference between the first dose and the student's birthdate is greater than 42 days with a 4 day tolerance,</li> <li>◦ the difference between the second dose and the previous is greater than 28 days with a 4 day tolerance,</li> <li>◦ the difference between the third dose and the previous is greater than 28 days with a 4 day tolerance,</li> <li>◦ the difference between the fourth dose and the previous is greater than 28 days with a 4 day tolerance,</li> </ul> </li> <li>• the student receives one dose of the DTaP, DTP or Tdap vaccine, and <ul style="list-style-type: none"> <li>◦ the difference between the first dose and the student's birthdate is greater than 42 days with a 4 day tolerance.</li> </ul> </li> </ul>

Rule	Conditions
<p><b>4 doses</b> <b>DTaP</b> <i>Compliant</i></p>	<p>The student is considered compliant if the following conditions have been met:</p> <ul style="list-style-type: none"> <li>• the student receives four doses of the DT, DTaP/DTP, Td, or Tdap vaccine, <ul style="list-style-type: none"> <li>◦ the difference between the first dose and the student's birthdate is greater than 42 days with a 4 day tolerance,</li> <li>◦ the difference between the second dose and the previous is greater than 28 days with a 4 day tolerance,</li> <li>◦ the difference between the third dose and the previous is greater than 28 days with a 4 day tolerance,</li> <li>◦ the difference between the fourth dose and the previous is greater than 4 months with a 4 day tolerance,</li> <li>◦ the difference between the fourth dose and the student's birthdate is greater than 48 months with a 4 day tolerance,</li> </ul> </li> <li>• the student receives one dose of the DTaP, DTP or Tdap vaccine, and <ul style="list-style-type: none"> <li>◦ the difference between the first dose and the student's birthdate is greater than 42 days with a 4 day tolerance.</li> </ul> </li> </ul>
<p><b>5 doses</b> <b>DTaP</b> <i>Compliant</i></p>	<p>The student is considered compliant if the following conditions have been met:</p> <ul style="list-style-type: none"> <li>• the student receives five doses of the DT, DTaP/DTP, Td, or Tdap vaccine, <ul style="list-style-type: none"> <li>◦ the difference between the first dose and the student's birthdate is greater than 42 days with a 4 day tolerance,</li> <li>◦ the difference between the second dose and the previous is greater than 28 days with a 4 day tolerance,</li> <li>◦ the difference between the third dose and the previous is greater than 28 days with a 4 day tolerance,</li> <li>◦ the difference between the fourth dose and the previous is greater than 4 months with a 4 day tolerance,</li> <li>◦ the difference between the fifth dose and the previous is greater than 6 months with a 4 day tolerance,</li> <li>◦ the difference between the fourth dose and the student's birthdate is greater than 12 months with a 4 day tolerance,</li> <li>◦ the difference between the last dose and the student's birthdate is greater than 48 months with a 4 day tolerance,</li> </ul> </li> <li>• the student receives one dose of the DTaP, DTP or Tdap vaccine, and <ul style="list-style-type: none"> <li>◦ the difference between the first dose and the student's birthdate is greater than 42 days with a 4 day tolerance.</li> </ul> </li> </ul>
<p><b>1 dose</b> <i>In Process</i></p>	<p>The student is considered in process if the following conditions have been met:</p> <ul style="list-style-type: none"> <li>• the student receives one dose of the DT, DTaP/DTP, Td, or Tdap vaccine, and</li> <li>• the difference between the last dose and the effective date is less than 1 month with a 1 day tolerance.</li> </ul>

Rule	Conditions
<b>3 doses</b> <i>In Process</i>	The student is considered in process if the following conditions have been met: <ul style="list-style-type: none"> <li>the student receives three doses of the DT, DTaP/DTP, Td, or Tdap vaccine, and</li> <li>the difference between the last dose and the effective date is less than 5 months with a 1 day tolerance.</li> </ul>
<b>2 doses age 7+</b> <i>In Process</i>	The student is considered in process if the following conditions have been met: <ul style="list-style-type: none"> <li>the student is at least 84 months old,</li> <li>the student receives three doses of the DT, DTaP/DTP, Td, or Tdap vaccine, and</li> <li>the difference between the last dose and the effective date is less than 5 months with a 1 day tolerance.</li> </ul>

## Tdap

Rule	Conditions
<b>1 dose</b> <i>Compliant</i>	The student is considered compliant if the following conditions have been met: <ul style="list-style-type: none"> <li>the student is at least 120 months (10 years) old,</li> <li>the student is in state grade: 07, 08, 09, 10, 11, 12,</li> <li>the student receives one dose of the Tdap, Td, or DTap/DTP vaccine, and</li> <li>the difference between the last dose and the student's birthdate is greater than 120 months with a 4 day tolerance.</li> </ul>
<b>1 dose 7th-12th grade 2019-2020</b> <i>Compliant</i> End Date: 06/30/2020	The student is considered compliant if the following conditions have been met: <ul style="list-style-type: none"> <li>the student is at least 84 months (7 years) old,</li> <li>the student is in state grade: 07, 08, 09, 10, 11, 12,</li> <li>the student receives one dose of the Tdap, Td, or DTap/DTP vaccine, and</li> <li>the difference between the dose and the student's birthdate is greater than 84 months with a 4 day tolerance.</li> </ul>
<b>1 dose 8th-12th grade 2020-2021</b> <i>Compliant</i> Active Start Date: 07/01/2020 Active End Date: 06/30/2021	The student is considered compliant if the following conditions have been met: <ul style="list-style-type: none"> <li>the student is at least 84 months (7 years) old,</li> <li>the student is in state grade: 08, 09, 10, 11, 12,</li> <li>the student receives one dose of the Tdap, Td, or DTap/DTP vaccine, and</li> <li>the difference between the dose and the student's birthdate is greater than 84 months with a 4 day tolerance.</li> </ul>

Rule	Conditions
<b>5 Year Booster</b> <i>Non-compliant</i>	The student is considered non-compliant if the student is at least 84 months (7 years) old, is in state grade: 07, 08, 09, 10, 11, 12 and receives no doses of the DTaP/DTP or Tdap vaccine.
<b>10 Year Booster</b> <i>Non-compliant</i>	The student is considered non-compliant if the student is in state grade: 07, 08, 09, 10, 11, 12 and receives no doses of the DTaP/DTP or Tdap vaccine in 120 months (10 years).

## Hepatitis B

Rule	Conditions
<b>No Requirement</b>	<ul style="list-style-type: none"> <li>• First state enrollment before July 1, 2002. Day tolerance: 4</li> </ul>
<b>3 doses required</b>	<ul style="list-style-type: none"> <li>• First state enrollment on or after July 1, 2002. Day tolerance: 4</li> <li>• 28 days (4 weeks) between dose 2 and previous. Day tolerance: 4</li> <li>• 56 days (8 weeks) between last dose and 2nd valid dose. Day tolerance: 4</li> <li>• 112 days (16 weeks) between last dose and 1st valid dose. Day tolerance: 4</li> <li>• Last dose on or after 24 weeks (168 days) of age. Day tolerance: 4</li> </ul>
<b>In Process</b>	<p>A student is considered In-Process if:</p> <ul style="list-style-type: none"> <li>• Student has at least 1 dose within the past 28 days (4 weeks) and student is not Compliant</li> <li>• Student has at least 2 doses and last dose was within the past 56 days (8 weeks) and student is not Compliant</li> <li>• Student has at least 2 doses and 2 previous doses were within the past 112 days (16 weeks) and student is not Compliant</li> <li>• Student has at least 2 doses and birth date is less than 6 months ago and student is not Compliant</li> </ul>

## Hepatitis A

Rule	Conditions
<b>No requirement</b>	<ul style="list-style-type: none"> <li>• First state enrollment before July 1, 2002</li> <li>• Student is under age 1.</li> </ul>

Rule	Conditions
<b>2 doses required</b>	<ul style="list-style-type: none"> <li>• First state enrollment on or after July 1, 2002. Day tolerance: 4</li> <li>• Attending school in Nevada for the first time (Usually PK, KG or out-of-state). Day tolerance: 4</li> <li>• 1st dose after 12 months of age. Day tolerance: 4</li> <li>• 6 months (24 weeks) between dose 2 and previous. Day tolerance: 4</li> </ul>
<b>In Process</b>	<p>A student is considered In-Process if:</p> <ul style="list-style-type: none"> <li>• Count between the last dose and the effective date is less than or equal to 5 months. Day tolerance: 1</li> </ul>

## MMR

Rule	Conditions
<b>1 dose Compliant</b>	<ul style="list-style-type: none"> <li>• Dose must be on or after 12 months of age. Day tolerance: 4</li> <li>• First state enrollment before July 1, 2008. Day tolerance: 4</li> </ul>
<b>2 doses required</b>	<ul style="list-style-type: none"> <li>• First state enrollment on or after July 1, 2008. Day tolerance: 4</li> <li>• First dose on or after 12 months of age. Day tolerance: 4</li> <li>• 28 days (4 weeks) between dose 2 and previous dose. Day tolerance: 4</li> </ul>
<b>1 dose in process</b>	<ul style="list-style-type: none"> <li>• Dose must be on or after 12 months of age</li> <li>• Student must be under 4 years of age</li> </ul>
<b>In Process</b>	28 days (4 weeks) between last dose and current date and not Compliant.

## Varicella

Rule	Conditions
<b>No requirement 1st state enroll &lt; 7/1/2003</b>	<p>First state enrollment before July 1, 2003            Start Enrollment end date 06/30/2003</p>
<b>1 dose Compliant</b>	<ul style="list-style-type: none"> <li>• First state enrollment on or after July 1, 2003 - June 30, 2011. Day tolerance: 4</li> <li>• 1st dose on or after 12 months of age. Day tolerance: 4</li> </ul>
<b>2 doses Compliant</b>	<ul style="list-style-type: none"> <li>• First state enrollment on or after July 1, 2011</li> <li>• 1st dose on or after 12 months of age. Day tolerance: 4</li> <li>• 28 days (4 weeks) between dose 2 and previous dose. Day tolerance: 4</li> </ul>

Rule	Conditions
<b>1 dose In-process</b>	<ul style="list-style-type: none"> <li>• Dose must be on or after 12 months of age. Day tolerance: 4</li> <li>• Student must be under 4 years of age</li> <li>• Difference between dose and effective date within the last 28 days</li> </ul>

## Polio

Students immunized with OPV after April 1, 2016 must be revaccinated with IPV in order for the polio series to be considered valid. The End Date of Polio OPV = 4/2/2016.

Rule	Conditions
<b>0-1 months No Requirement</b>	N/A
<b>2-3 months 1 dose - Compliant</b>	<ul style="list-style-type: none"> <li>• 1 dose after 42 days of birth. Day tolerance: 4</li> </ul>
<b>4-5 months 2 doses - Compliant</b>	<ul style="list-style-type: none"> <li>• 1 dose after 42 days of birth. Day tolerance: 4</li> <li>• 28 days (4 weeks) between the 2nd dose and the 1st dose. Day tolerance: 4</li> </ul>
<b>3 doses under 4 - Compliant</b>	<ul style="list-style-type: none"> <li>• 1 dose after 42 days of birth. Day tolerance: 4</li> <li>• 28 days (4 weeks) between the 2nd dose and the 1st dose. Day tolerance: 4</li> <li>• 28 days (4 weeks) between the 3rd dose and the 2nd dose. Day tolerance: 4</li> </ul>
<b>3 doses Compliant</b>	<ul style="list-style-type: none"> <li>• All IPV or all OPV.</li> <li>• 28 days (4 weeks) between dose 2 and previous dose. Day tolerance: 4</li> <li>• 6 months between dose 3 and previous dose. Day tolerance: 4</li> <li>• 1st dose after 42 days of birth. Day tolerance: 4</li> <li>• Dose 3 on or after 4 years of age. Day tolerance: 4</li> </ul>



Rule	Conditions
<b>4 doses Compliant</b>	<ul style="list-style-type: none"> <li>• 28 days (4 weeks) between dose 2 and previous dose. Day tolerance: 4</li> <li>• 28 days (4 weeks) between dose 3 and previous dose. Day tolerance: 4</li> <li>• 6 months between dose 4 and previous dose. Day tolerance: 4</li> <li>• 1st dose after 42 days of birth. Day tolerance: 4</li> <li>• First state enrollment before October 1, 2010. Day tolerance: 4</li> </ul>
<b>4 doses 8/7/10 Compliant</b>	<ul style="list-style-type: none"> <li>• Difference between the 1 dose and birthdate is greater than 42 days. Day tolerance: 4</li> <li>• Difference between the 2 dose and 1 previous is greater than 28 days. Day tolerance: 4</li> <li>• Difference between the 3 dose and 1 previous is greater than 28 days. Day tolerance: 4</li> <li>• Difference between the 4 dose and 1 previous is greater than 28 days. Day tolerance: 4</li> </ul>
<b>4 doses 1st st enroll &lt; 7/1/2011 Compliant</b>	<ul style="list-style-type: none"> <li>• Difference between the 1 dose and birthdate is greater than 42 days. Day tolerance: 4</li> <li>• Difference between the 2 dose and 1 previous is greater than 28 days. Day tolerance: 4</li> <li>• Difference between the 3 dose and 1 previous is greater than 28 days. Day tolerance: 4</li> <li>• Difference between the 4 dose and 1 previous is greater than 6 months. Day tolerance: 4</li> </ul>
<b>Last dose - In Process</b>	<p>A student is considered In-Process if</p> <ul style="list-style-type: none"> <li>• Student had last dose within the past 28 days (4 weeks) and student is not Compliant</li> </ul>
<b>2 dose - In Process</b>	<p>A student is considered In-Process if</p> <ul style="list-style-type: none"> <li>• Difference between the last dose and current date is less than 5 months. Day tolerance: 1</li> </ul>

## Meningococcal MCV4

Rule	Condition
<b>Enrolled before 7/1/2009</b>	No requirement

Rule	Condition
<b>1 dose Compliant</b>	<ul style="list-style-type: none"> <li>• Student is in state grade level 07</li> <li>• Difference between last dose and birthday <math>\geq</math> 120 months. Day tolerance: 4</li> </ul>
<b>No Dose 7th Non-Compliant</b>	<ul style="list-style-type: none"> <li>• Student is in state grade level 07</li> </ul>
<b>7th-8th Grade 1 Dose Compliant</b> <b>Active start date 6/30/2018</b>	<ul style="list-style-type: none"> <li>• Student is in state grade level 07, 08</li> <li>• Difference between the last dose and birthday <math>\geq</math> 120 months. Day tolerance: 4</li> </ul>
<b>7th-9th Grade 1 Dose Compliant</b> <b>Active start date 6/30/2019</b>	<ul style="list-style-type: none"> <li>• Student is in state grade level 07, 08, 09</li> <li>• Difference between the last dose and birthday <math>\geq</math> 120 months. Day tolerance: 4</li> </ul>
<b>7th-10th Grade 1 Dose Compliant</b> <b>Active start date 6/30/2020</b>	<ul style="list-style-type: none"> <li>• Student is in state grade level 07, 08, 09, 10</li> <li>• Difference between the last dose and birthday <math>\geq</math> 120 months. Day tolerance: 4</li> </ul>
<b>7th-11th Grade 1 Dose Compliant</b> <b>Active start date 6/30/2021</b>	<ul style="list-style-type: none"> <li>• Student is in state grade level 07, 08, 09, 10, 11</li> <li>• Difference between the last dose and birthday <math>\geq</math> 120 months. Day tolerance: 4</li> </ul>
<b>7th-12th Grade 1 Dose Compliant</b> <b>Active start date 6/30/2022</b>	<ul style="list-style-type: none"> <li>• Student is in state grade level 07, 08, 09, 10, 11, 12</li> <li>• Difference between the last dose and birthday <math>\geq</math> 120 months. Day tolerance: 4</li> </ul>
<b>7th-8th Grade No Dose Non-Compliant</b> <b>Active start date 6/30/2018</b>	Student is in state grade level 07, 08
<b>7th-9th Grade No Dose Non-Compliant</b> <b>Active start date 6/30/2019</b>	Student is in state grade level 07, 08, 09
<b>7th-10th Grade No Dose Non-Compliant</b> <b>Active start date 6/30/2020</b>	Student is in state grade level 07, 08, 09, 10
<b>7th-11th Grade No Dose Non-Compliant</b> <b>Active start date 6/30/2021</b>	Student is in state grade level 07, 08, 09, 10, 11
<b>7th-12th Grade No Dose Non-Compliant</b> <b>Active start date 6/30/2022</b>	Student is in state grade level 07, 08, 09, 10, 11, 12

Rule	Condition
<b>8th-12th 1 Dose - New</b>	<ul style="list-style-type: none"> <li>• Compliant</li> <li>• Enrollment year = 1</li> <li>• Student is in state grade level 07, 08, 09, 10, 11, 12</li> <li>• Difference between last dose and birthdate <math>\geq</math> 120 months. Day tolerance: 4</li> </ul>
<b>8th-12th No Dose - New</b>	<ul style="list-style-type: none"> <li>• Non-compliant</li> <li>• Enrollment year = 1</li> <li>• Student is in state grade level 07, 08, 09, 10, 11, 12</li> </ul>